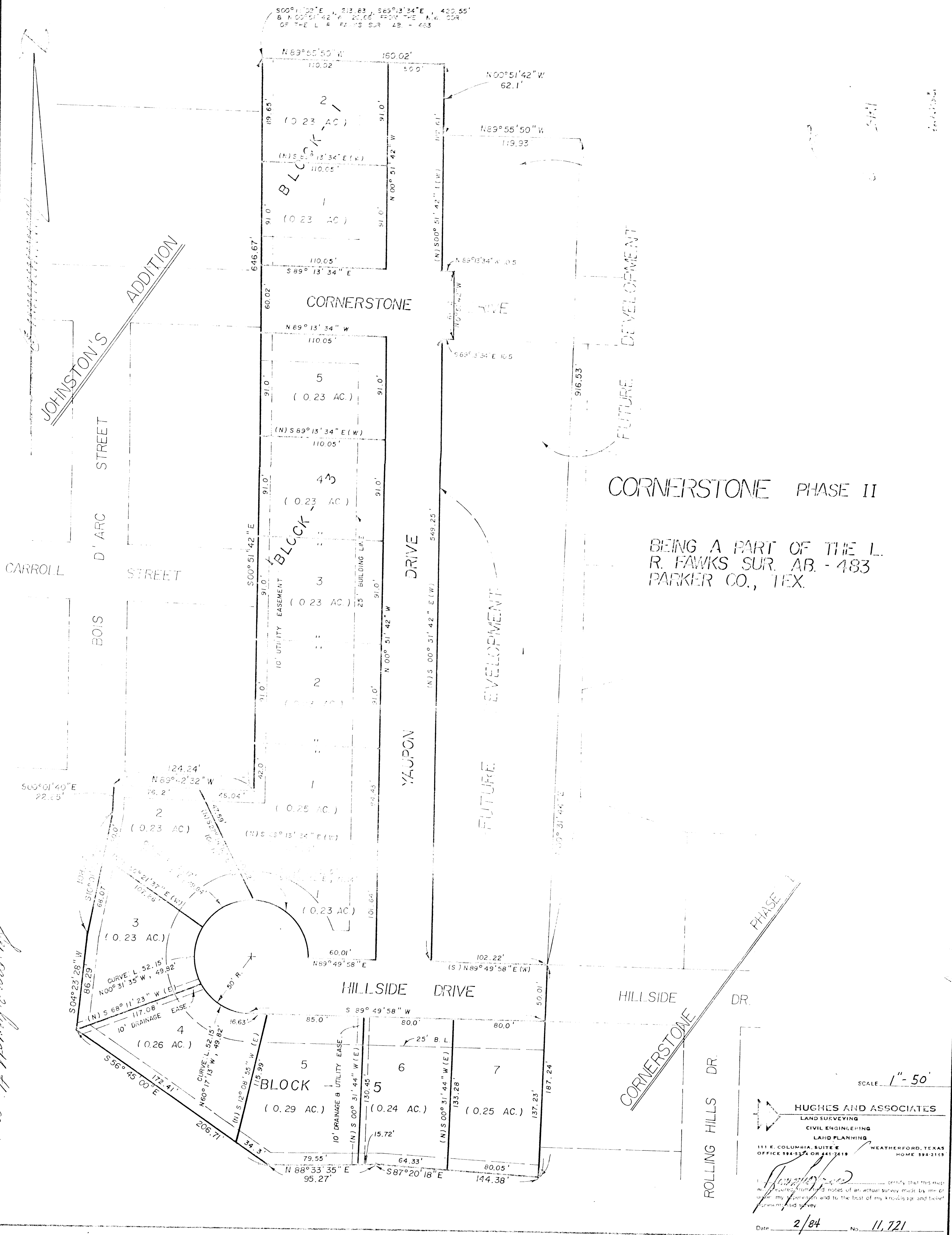


S 00° 01' 42" E, 213.63', S 89° 13' 34" E, 420.55'
 B N 00° 51' 42" W, 25.00' FROM THE N.W. COR.
 OF THE L. R. FAWKS SUR. AB. - 483



CORNERSTONE PHASE II

BEING A PART OF THE L. R. FAWKS SUR. AB. - 483 PARKER CO., TEX.

See page 2 herewith this page

SCALE 1" = 50'

HUGHES AND ASSOCIATES
 LAND SURVEYING
 CIVIL ENGINEERING
 LAND PLANNING
 111 E. COLUMBIA, SUITE E WEATHERFORD, TEXAS
 OFFICE 594-5374 OR 541-7619 HOME 594-2165

I, *[Signature]*, certify that this map was prepared from field notes of an actual survey made by me or under my supervision and to the best of my knowledge and belief conforms said survey.

Date 2/84 No. 11,721