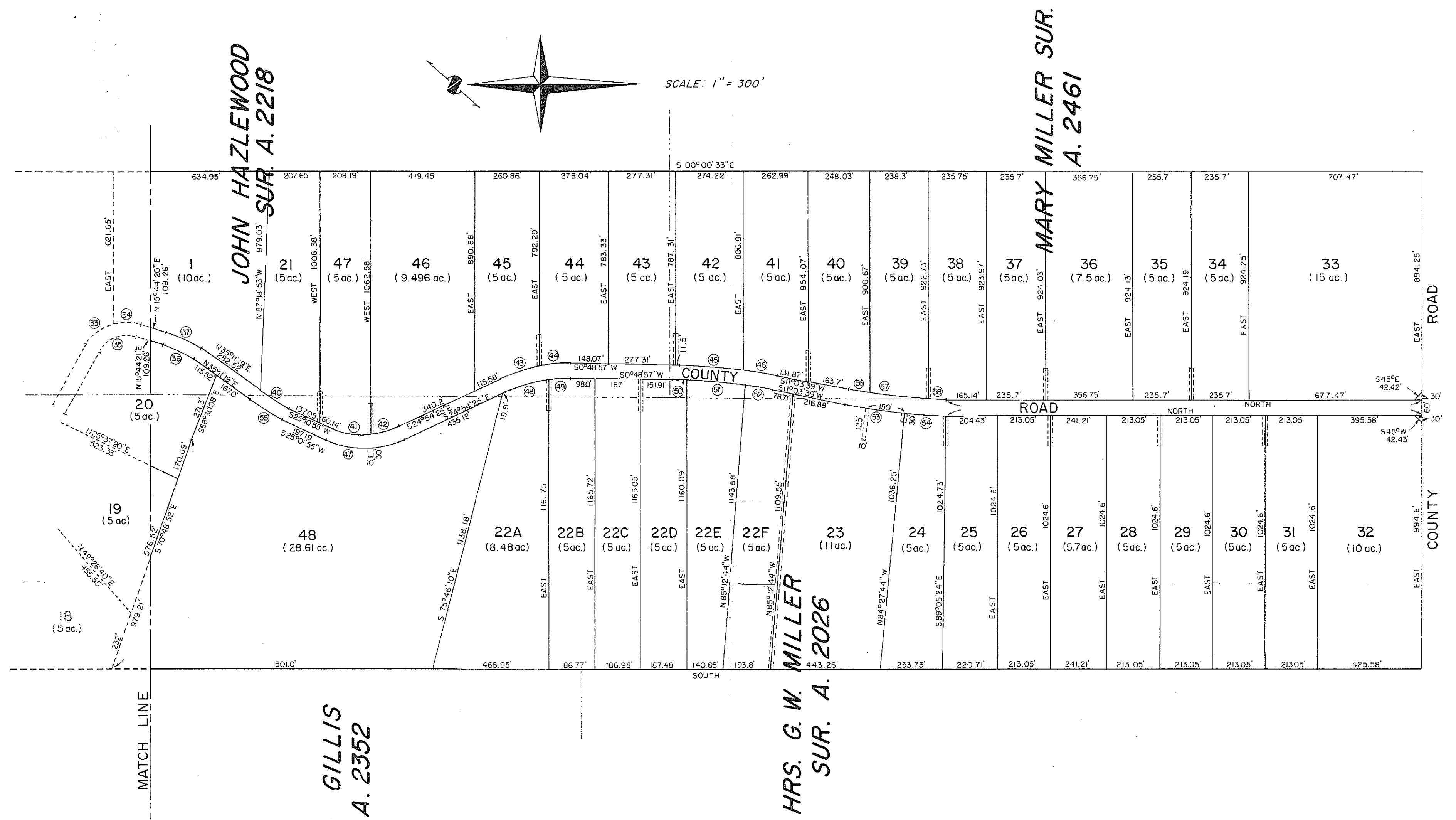


SCALE: 1" = 300'



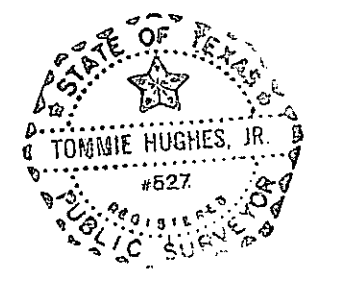
CURVE DATA			
NO.	R	CH. BRG. & LGTH.	LGTH.
33	188.77	N4°13'58" W, 131.94'	134.78'
34	188.77	N2°01'10" W, 115.15'	117.01'
35	128.77	N22°28'27" W, 159.31'	171.77'
36	407.63	N25°27'50" E, 137.71'	138.37'
37	467.63	N25°27'51" E, 157.98'	158.74'
40	813.96	N30°06'37" E, 144.1'	144.29'
41	313.39	S10°35'08" W, 156.36'	158.03'
42	313.39	S14°23'15" E, 114.5'	115.16'
43	656.77	S17°45'01" E, 163.84'	164.26'
44	656.77	S4°53'03" E, 130.46'	130.68'
45	2231.06	S4°11'59" W, 263.42'	263.58'
46	2231.06	S9°19'21" W, 135.36'	135.38'
47	373.39	S00°03'31" W, 315.28'	325.49'
48	596.77	N16°19'34" W, 178.29'	178.96'
49	596.77	N3°29'29" W, 88.94'	89.03'
50	2171.06	N4°17'08" E, 35.6'	35.6'
51	2171.06	N4°53'12" E, 237.19'	237.3'
52	2171.06	N9°32'22" E, 115.28'	115.3'
53	2125.58	N7°49'27" E, 240.03'	240.16'
54	2125.58	N2°17'34" E, 170.13'	170.18'
55	873.96	S30°06'37" W, 154.72'	154.92'
56	2065.58	S 9°49'51" W, 88.67'	88.68'
57	2065.58	N 5°16'49" E, 239.32'	239.45'
58	2065.58	N 0°58'57" E, 70.62'	70.67'

STEEL & GILLIS SURV. A. 2352

HRS. G. W. MILLER SUR. A. 2026

NOTE: UTILITY EASEMENTS TO BE 5' OFF LOT LINE AND 125' LONG EXCEPT OTHERWISE INDICATED.

A MAP OF TRACTS KNOWN AS
COUNTRY LIVING
IN PARKER COUNTY, TEXAS



HUGHES AND ASSOCIATES
LAND SURVEYING
CIVIL ENGINEERING
LAND PLANNING
131 W. CHURCH STREET - WEATHERFORD, TEXAS
OFFICE 594-5374 HOME 594-2165

I certify that this map was prepared from field notes of an actual survey made by me or under my supervision and to the best of my knowledge and belief represents said survey.