

C-5

Doc 00480029 Bk DR Vol 2107 Pg 226

FILED AND RECORDED  
OFFICIAL PUBLIC RECORDS  
On May 14, 2003 at 09:28A

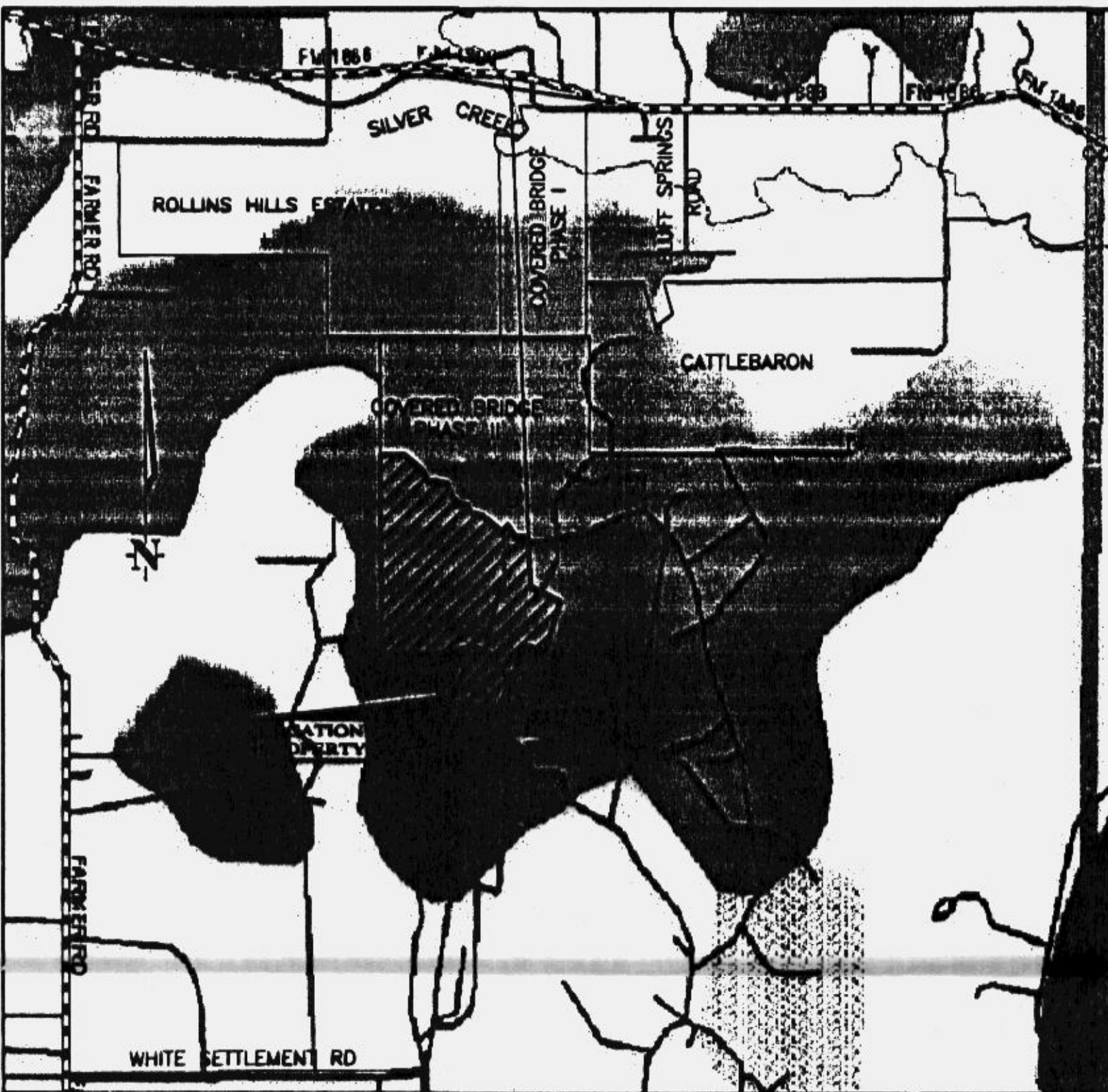
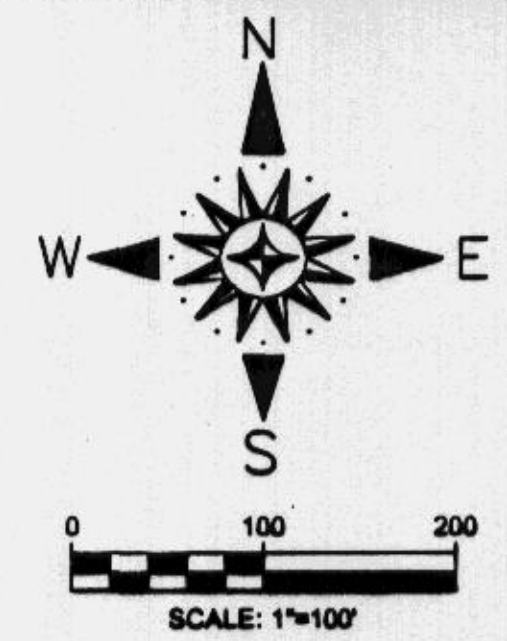
Document Number: 00480029  
Acres: 5.00

By Patricia Nelson

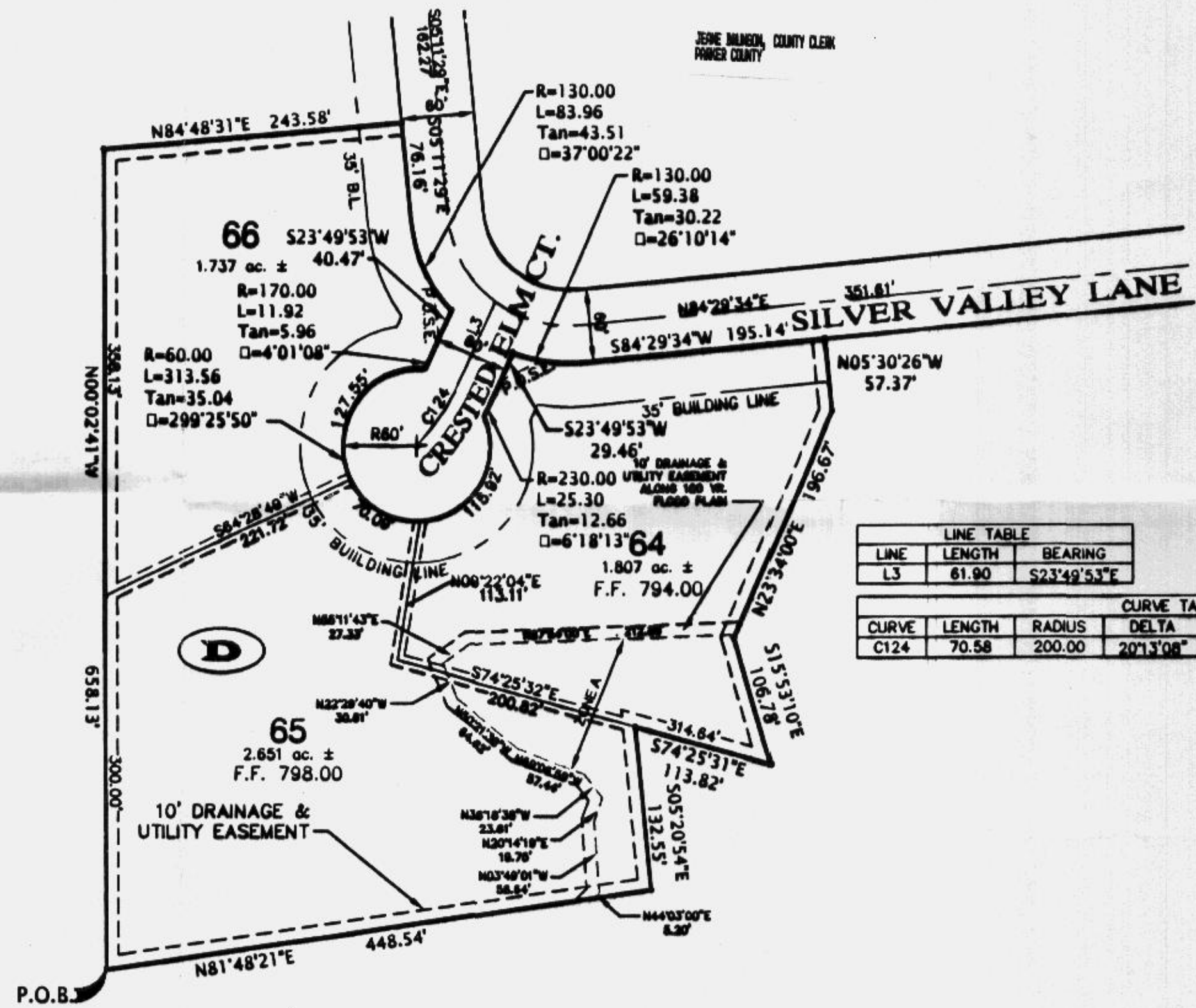
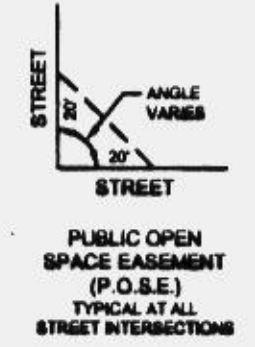
STATE OF TEXAS COUNTY OF PARKER  
I hereby certify that this instrument was  
filed on the date and time stamped herein by me  
and was duly recorded in the volume and page  
of the named records of Parker County  
as stamped herein by me.

May 14, 2003

JESSE HUBBARD, COUNTY CLERK  
PARKER COUNTY



**LOCATION MAP**  
SCALE: 1"=2000'



LINE TABLE		
LINE	LENGTH	BEARING
L3	61.90	S23°49'53"E

CURVE TABLE						
CURVE	LENGTH	RADIUS	DELTA	CHORD	CHORD BRG.	TANGENT
C124	70.58	200.00	20°13'08"	70.21	N33°56'27"E	35.66



OWNER:  
CENTRAL PARK INVESTMENTS  
6000 WESTERN PLACE II  
SUITE 485  
FORT WORTH, TEXAS 76107

**BARNETT  
ENGINEERING INC.**  
P.O. BOX 2220  
WEATHERFORD, TX 76086  
(817) 590-4278  
(817) 341-4242 METRO  
(817) 590-4270 FAX  
www.barnettengineering.com

SURVEYOR:  
DAVID HARLAN  
HARLAN LAND SURVEYING, INC.  
215 EAST EUREKA  
WEATHERFORD, TEXAS 76086  
817-596-9700

ACCT. NO.: 11567  
SCH. DIST.: AL  
CITY: CO  
MAP NO.: N-13

REPLAT  
OF  
**COVERED BRIDGE CANYON**  
BLOCK D, LOTS 64, 65 & 66  
T & P RR COMPANY SURVEY NO. 5  
ABSTRACT NO. 1506  
PARKER COUNTY, TEXAS  
FEBRUARY, 2003

S:\Land Projects\R2\REPLAT OF COVERED BRIDGE\31030062-Plat-S1.dwg, SHEET 1, 03/06/2003 09:56:36 AM, becky