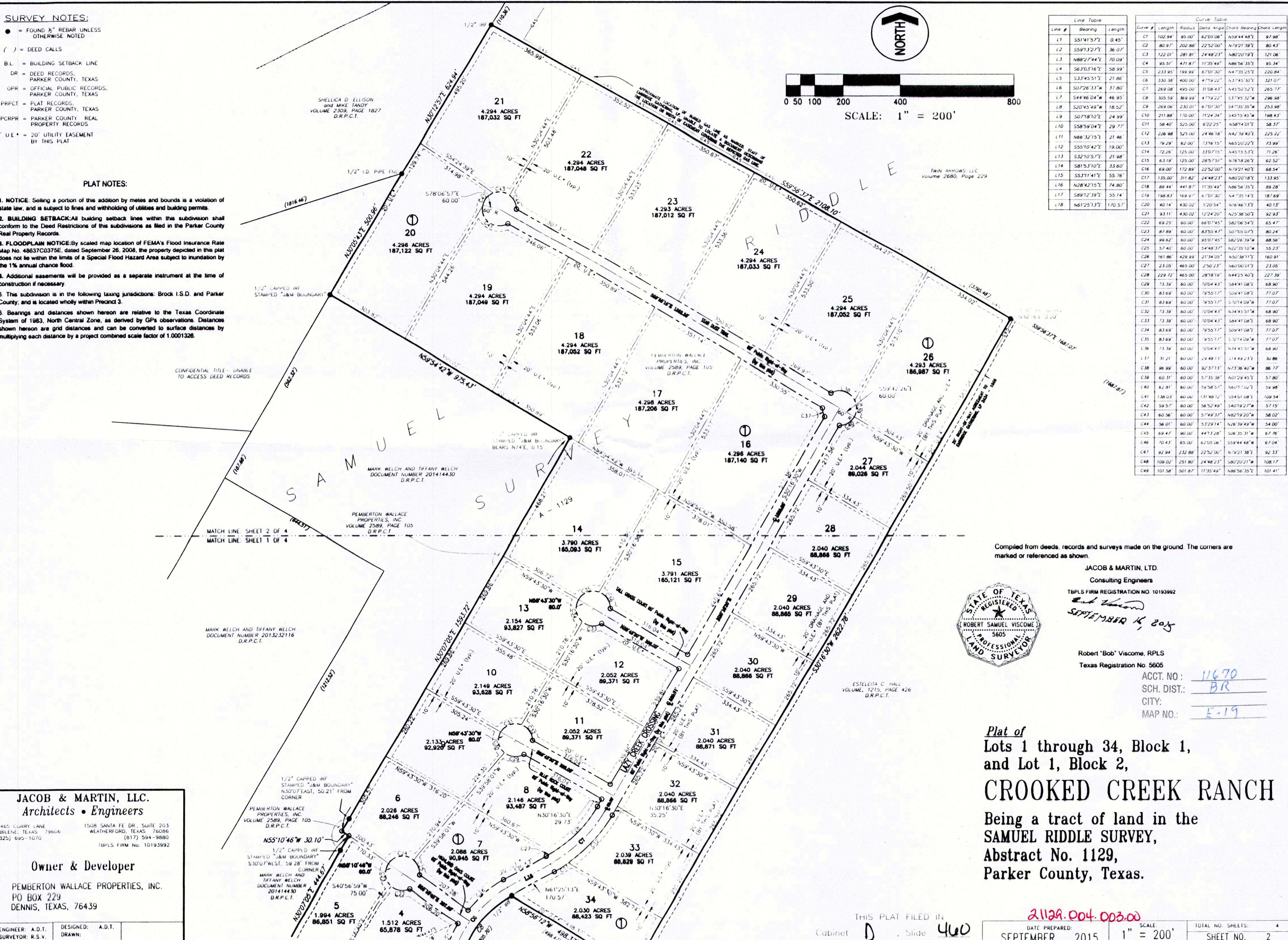


SURVEY NOTES:

- = FOUND 1/2" REBAR UNLESS OTHERWISE NOTED
- () = DEED CALLS
- BL = BUILDING SETBACK LINE
- DR = DEED RECORDS, PARKER COUNTY, TEXAS
- OPR = OFFICIAL PUBLIC RECORDS, PARKER COUNTY, TEXAS
- PRPCT = PLAT RECORDS, PARKER COUNTY, TEXAS
- PCRPFR = PARKER COUNTY REAL PROPERTY RECORDS
- 20' U.E. = 20' UTILITY EASEMENT BY THIS PLAT

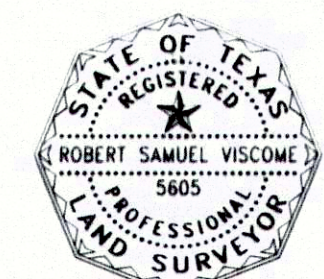
PLAT NOTES:

1. NOTICE: Selling a portion of this addition by metes and bounds is a violation of state law, and is subject to fines and withholding of utilities and building permits.
2. BUILDING SETBACK: All building setback lines within this subdivision shall conform to the Deed Restrictions of this subdivisions as filed in the Parker County Real Property Records.
3. FLOODPLAIN NOTICE: By scaled map location of FEMA's Flood Insurance Rate Map No. 48637C0375E, dated September 26, 2008, the property depicted in this plat does not lie within the limits of a Special Flood Hazard Area subject to inundation by the 1% annual chance flood.
4. Additional easements will be provided as a separate instrument at the time of construction if necessary.
5. This subdivision is in the following taxing jurisdictions: Brock I.S.D. and Parker County, and is located wholly within Precinct 3.
6. Bearings and distances shown hereon are relative to the Texas Coordinate System of 1983, North Central Zone, as derived by GPs observations. Distances shown hereon are grid distances and can be converted to surface distances by multiplying each distance by a project combined scale factor of 1.0001326.



Line Table			Curve Table					
Line #	Bearing	Length	Curve #	Radius	Delta Angle	Chord Bearing	Chord Length	
L1	S51°41'57"E	0.45'	C1	102.94'	95.00'	S27°05'06"	N59°44'48"	97.98'
L2	S59°13'27"E	36.07'	C2	80.97'	202.88'	S27°52'00"	N79°21'39"	80.43'
L3	N88°27'44"E	70.09'	C3	122.01'	281.81'	S24°48'23"	N80°20'19"	121.06'
L4	S63°10'16"E	58.99'	C4	95.51'	471.87'	S11°35'49"	N86°36'35"	95.34'
L5	S33°45'51"E	21.86'	C5	233.95'	199.99'	S7°01'30"	N47°35'25"	220.84'
L6	S07°26'33"W	37.80'	C6	330.38'	400.00'	S47°19'22"	N37°45'30"	321.07'
L7	S44°46'04"W	46.95'	C7	269.08'	495.00'	S13°08'43"	N45°20'52"	265.77'
L8	S20°45'49"W	18.52'	C8	305.59'	369.99'	S47°19'22"	S37°45'32"W	296.88'
L9	S07°18'10"E	24.99'	C9	269.06'	230.01'	S7°01'30"	S47°35'35"W	253.98'
L10	S58°59'04"E	29.77'	C10	211.88'	170.00'	S12°43'34"	S45°15'45"W	198.43'
L11	N86°32'15"E	21.46'	C11	58.40'	525.00'	S22°25'00"	N38°14'01"E	58.37'
L12	S55°10'42"E	19.00'	C12	226.88'	525.00'	S24°46'18"	N42°19'40"E	225.22'
L13	S32°10'57"E	21.98'	C13	79.29'	62.00'	S37°16'15"	N65°20'22"	73.99'
L14	S81°51'10"E	33.60'	C14	72.26'	125.00'	S37°17'15"	N45°15'53"E	71.26'
L15	S53°11'41"E	55.76'	C15	63.19'	125.00'	S28°57'51"	N78°18'26"E	62.52'
L16	N28°42'15"E	74.80'	C16	69.00'	172.89'	S22°52'00"	N79°21'40"E	68.54'
L17	S89°12'39"E	55.14'	C17	135.00'	311.82'	S24°48'23"	N80°20'18"E	133.95'
L18	N61°25'13"E	170.57'	C18	89.44'	441.87'	S11°35'49"	N86°36'35"E	89.28'
L19	S89°12'39"E	55.14'	C19	198.83'	189.97'	S7°01'30"	N47°35'25"E	187.69'
L20	N61°25'13"E	170.57'	C20	40.14'	430.02'	S20°24'00"	N16°46'13"E	40.13'
L21	93.11'	430.02'	C21	93.11'	430.02'	S20°24'00"	N25°38'50"E	92.83'
L22	69.25'	60.00'	C22	69.25'	60.00'	S67°04'57"	S82°06'54"E	65.47'
L23	87.89'	60.00'	C23	87.89'	60.00'	S83°55'47"	S07°05'07"E	80.24'
L24	99.82'	60.00'	C24	99.82'	60.00'	S57°45'15"	S82°26'39"W	88.56'
L25	57.40'	60.00'	C25	57.40'	60.00'	S44°48'37"	N22°35'10"W	55.23'
L26	181.86'	429.99'	C26	181.86'	429.99'	S14°05'05"	N50°58'11"E	180.91'
L27	23.05'	485.00'	C27	23.05'	485.00'	S20°23'00"	N60°100'01"E	23.05'
L28	229.72'	485.00'	C28	229.72'	485.00'	S28°18'19"	N44°25'40"E	227.39'
L29	73.39'	60.00'	C29	73.39'	60.00'	S07°04'43"	S84°41'08"E	68.90'
L30	83.69'	60.00'	C30	83.69'	60.00'	S25°51'17"	S09°41'08"E	77.07'
L31	83.69'	60.00'	C31	83.69'	60.00'	S25°51'17"	S10°14'09"W	77.07'
L32	73.39'	60.00'	C32	73.39'	60.00'	S07°04'43"	S34°45'51"W	68.90'
L33	73.39'	60.00'	C33	73.39'	60.00'	S07°04'43"	S84°41'08"E	68.90'
L34	83.69'	60.00'	C34	83.69'	60.00'	S25°51'17"	S09°41'08"E	77.07'
L35	83.69'	60.00'	C35	83.69'	60.00'	S25°51'17"	S10°14'09"W	77.07'
L36	73.39'	60.00'	C36	73.39'	60.00'	S07°04'43"	S34°45'51"W	68.90'
L37	31.21'	60.00'	C37	31.21'	60.00'	S29°48'11"	S14°49'33"E	30.86'
L38	96.99'	60.00'	C38	96.99'	60.00'	S23°37'13"	N73°36'40"W	86.77'
L39	60.31'	60.00'	C39	60.31'	60.00'	S73°35'38"	N01°29'45"E	57.80'
L40	62.81'	60.00'	C40	62.81'	60.00'	S9°58'57"	N60°17'02"E	59.88'
L41	138.03'	60.00'	C41	138.03'	60.00'	S31°48'12"	S54°01'08"E	109.54'
L42	59.57'	60.00'	C42	59.57'	60.00'	S65°24'49"	S40°19'27"W	57.15'
L43	60.56'	60.00'	C43	60.56'	60.00'	S74°9'37"	N82°19'20"W	58.02'
L44	56.01'	60.00'	C44	56.01'	60.00'	S32°29'14"	N26°39'49"W	54.00'
L45	69.47'	90.00'	C45	69.47'	90.00'	S44°32'08"	S08°35'31"E	67.76'
L46	70.43'	65.00'	C46	70.43'	65.00'	S25°06'06"	S59°44'48"W	67.04'
L47	92.94'	232.88'	C47	92.94'	232.88'	S24°48'23"	N79°21'39"	92.33'
L48	109.02'	251.80'	C48	109.02'	251.80'	S24°48'23"	S80°20'21"W	108.17'
L49	101.58'	501.87'	C49	101.58'	501.87'	S11°35'49"	N86°36'35"E	101.41'

Compiled from deeds, records and surveys made on the ground. The corners are marked or referenced as shown.



JACOB & MARTIN, LTD.
 Consulting Engineers
 TBPLS FIRM REGISTRATION NO. 10193992
 SEPTEMBER 16, 2015
 Robert "Bob" Viscome, RPLS
 Texas Registration No. 5605

ACCT. NO.: 11670
 SCH. DIST.: BR
 CITY:
 MAP NO.: E-19

Plat of
Lots 1 through 34, Block 1,
and Lot 1, Block 2,
CROOKED CREEK RANCH
 Being a tract of land in the
SAMUEL RIDDLE SURVEY,
Abstract No. 1129,
Parker County, Texas.

JACOB & MARTIN, LLC.
 Architects • Engineers
 3405 CURRY LANE, ABILENE, TEXAS 79606 (325) 695-1070
 1508 SANTA FE DR., SUITE 203 WEATHERFORD, TEXAS 76086 (817) 594-9080
 TBPLS FIRM NO. 10193992
Owner & Developer
 PEMBERTON WALLACE PROPERTIES, INC.
 PO BOX 229
 DENNIS, TEXAS, 76439

THIS PLAT FILED IN Cabinet D Slide 400
 DATE PREPARED: SEPTEMBER 2015
 SCALE: 1" = 200'
 TOTAL NO. SHEETS: 4
 SHEET NO. 2