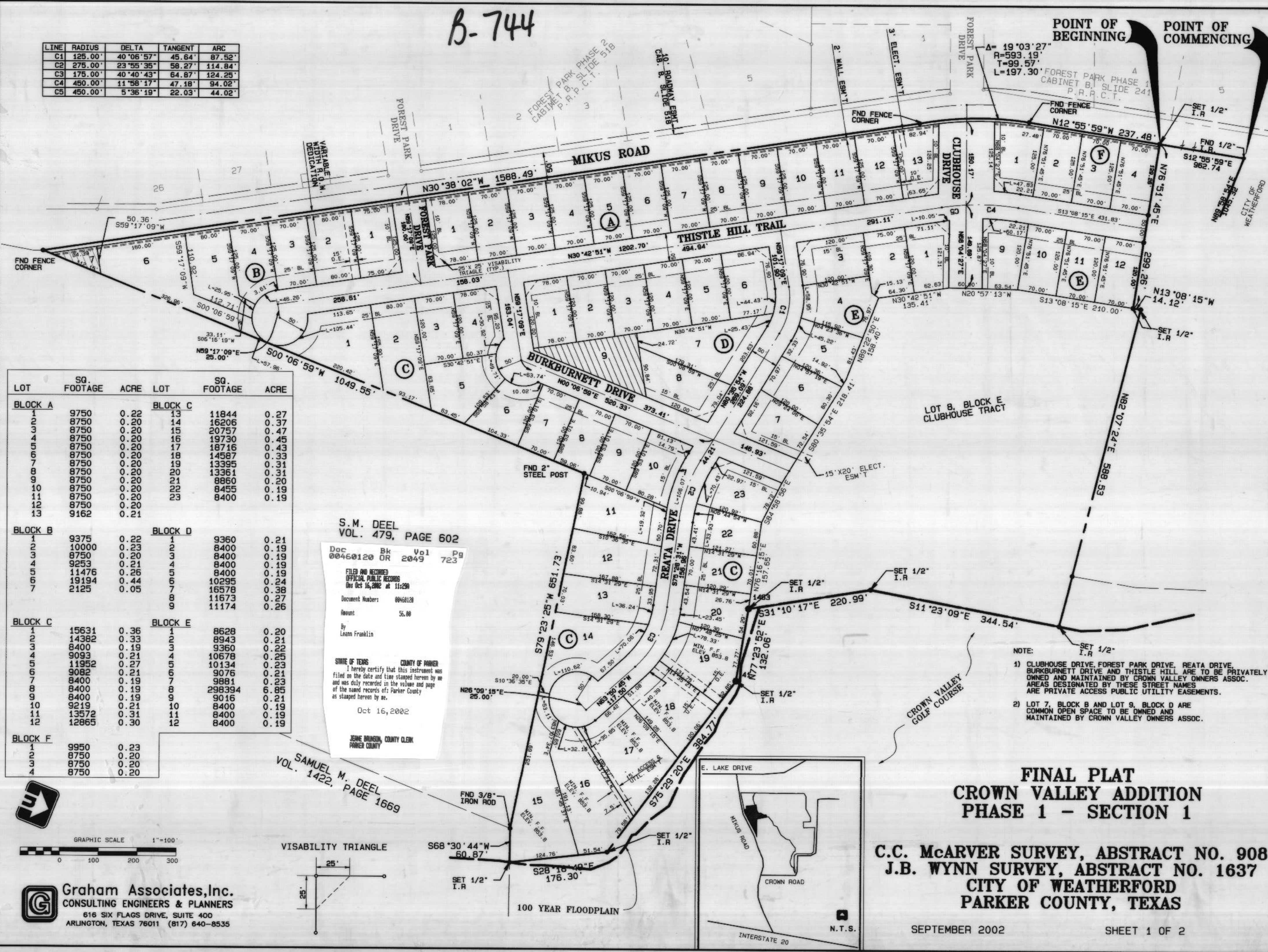


B-744

LINE	RADIUS	DELTA	TANGENT	ARC
C1	125.00'	40°06'57"	45.64'	87.52'
C2	275.00'	23°55'35"	58.27'	114.84'
C3	175.00'	40°40'43"	64.87'	124.25'
C4	450.00'	11°58'17"	47.18'	94.02'
C5	450.00'	5°36'19"	22.03'	44.02'



LOT	SQ. FOOTAGE	ACRE	LOT	SQ. FOOTAGE	ACRE
BLOCK A					
1	9750	0.22	13	11844	0.27
2	8750	0.20	14	16206	0.37
3	8750	0.20	15	20757	0.47
4	8750	0.20	16	19730	0.45
5	8750	0.20	17	18716	0.43
6	8750	0.20	18	14587	0.33
7	8750	0.20	19	13395	0.31
8	8750	0.20	20	13361	0.31
9	8750	0.20	21	8860	0.20
10	8750	0.20	22	8455	0.19
11	8750	0.20	23	8400	0.19
12	8750	0.20			
13	9162	0.21			
BLOCK B					
1	9375	0.22	1	9360	0.21
2	10000	0.23	2	8400	0.19
3	8750	0.20	3	8400	0.19
4	9253	0.21	4	8400	0.19
5	11476	0.26	5	8400	0.19
6	19194	0.44	6	10295	0.24
7	2125	0.05	7	16578	0.38
			8	11673	0.27
			9	11174	0.26
BLOCK C					
1	15631	0.36	1	8628	0.20
2	14382	0.33	2	8943	0.21
3	8400	0.19	3	9360	0.22
4	9093	0.21	4	10578	0.25
5	11952	0.27	5	10134	0.23
6	9082	0.21	6	9076	0.21
7	8400	0.19	7	9881	0.23
8	8400	0.19	8	298394	6.85
9	8400	0.19	9	9016	0.21
10	9219	0.21	10	8400	0.19
11	13572	0.31	11	8400	0.19
12	12865	0.30	12	8400	0.19
BLOCK D					
1	9950	0.23			
2	8750	0.20			
3	8750	0.20			
4	8750	0.20			
BLOCK E					
1	9360	0.21			
2	8400	0.19			
3	8400	0.19			
4	8400	0.19			
5	10295	0.24			
6	16578	0.38			
7	11673	0.27			
8	11174	0.26			
BLOCK F					
1	9950	0.23			
2	8750	0.20			
3	8750	0.20			
4	8750	0.20			

S.M. DEEL
VOL. 479, PAGE 602

Doc 00460120 Bk DR Vol 2049 Pg 723

FILED AND RECORDED
OFFICIAL PUBLIC RECORDS
Oct 16, 2002 at 11:29A

Document Number: 00460120
Amount: \$6.00

By Leon Franklin

STATE OF TEXAS COUNTY OF PARKER
I hereby certify that this instrument was filed on the date and time stamped herein by me and was duly recorded in the volume and page of the named records of Parker County as stamped herein by me.

Oct 16, 2002

JEROME BRUNSON, COUNTY CLERK
PARKER COUNTY

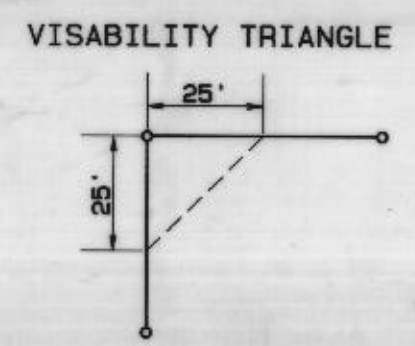
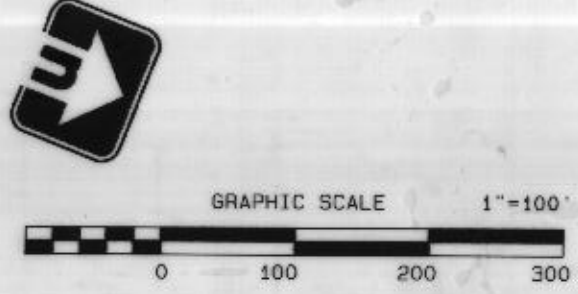
SAMUEL M. DEEL
VOL. 1422, PAGE 1669

NOTE:

- 1) CLUBHOUSE DRIVE, FOREST PARK DRIVE, REATA DRIVE, BURKBURNETT DRIVE, AND THISTLE HILL ARE TO BE PRIVATELY OWNED AND MAINTAINED BY CROWN VALLEY OWNERS ASSOC. AREAS DESIGNATED BY THESE STREET NAMES ARE PRIVATE ACCESS PUBLIC UTILITY EASEMENTS.
- 2) LOT 7, BLOCK B AND LOT 9, BLOCK D ARE COMMON OPEN SPACE TO BE OWNED AND MAINTAINED BY CROWN VALLEY OWNERS ASSOC.

**FINAL PLAT
CROWN VALLEY ADDITION
PHASE 1 - SECTION 1**

**C.C. McARVER SURVEY, ABSTRACT NO. 908
J.B. WYNN SURVEY, ABSTRACT NO. 1637
CITY OF WEATHERFORD
PARKER COUNTY, TEXAS**



Graham Associates, Inc.
CONSULTING ENGINEERS & PLANNERS
616 SIX FLAGS DRIVE, SUITE 400
ARLINGTON, TEXAS 76011 (817) 640-8535

