

DEER CREEK PHASE I

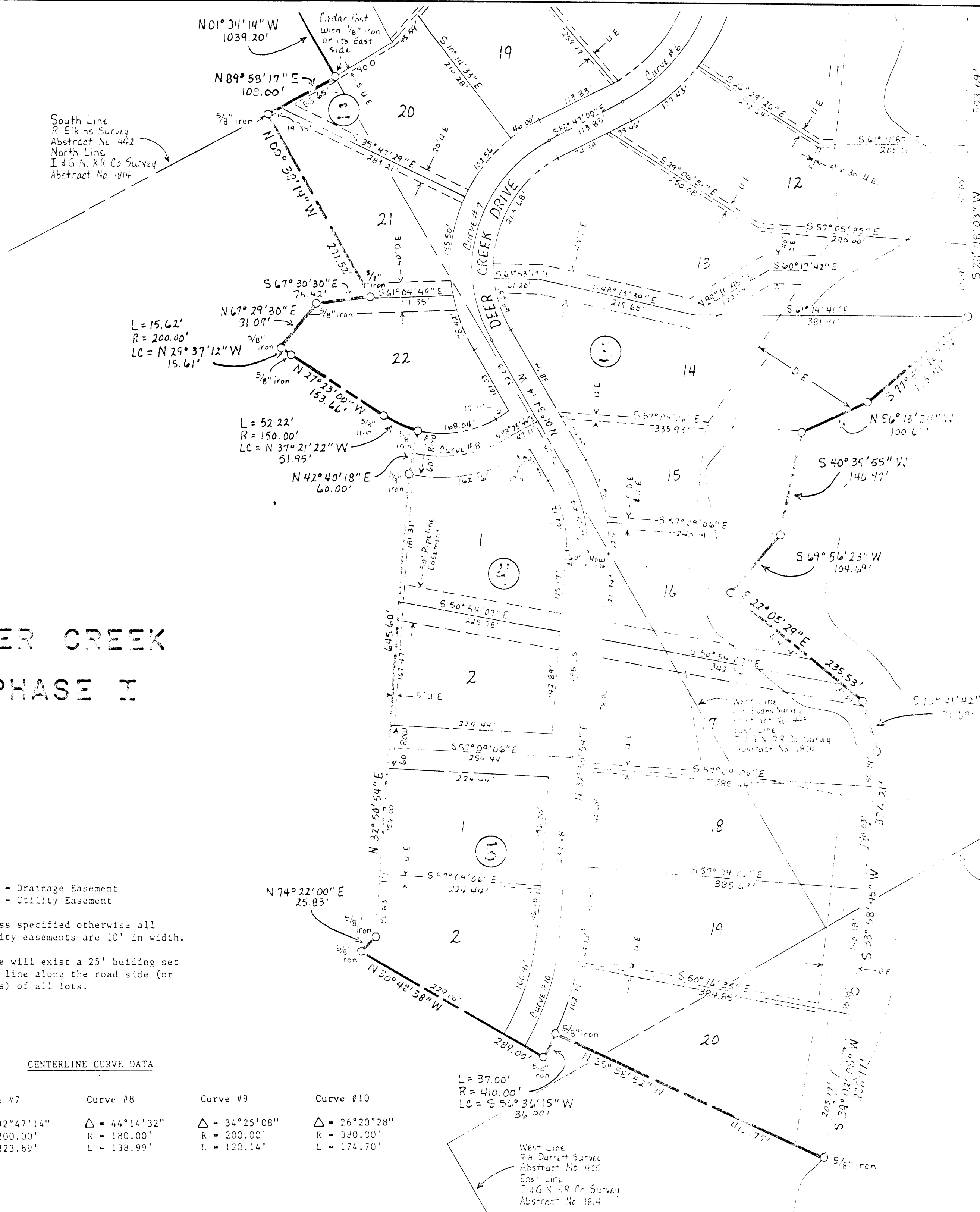
D.E. = Drainage Easement
 U.E. = Utility Easement

Unless specified otherwise all utility easements are 10' in width.

There will exist a 25' building set back line along the road side (or sides) of all lots.

CENTERLINE CURVE DATA

Curve #6	Curve #7	Curve #8	Curve #9	Curve #10
Δ = 56°47'07"	Δ = 92°47'14"	Δ = 44°14'32"	Δ = 34°25'08"	Δ = 26°20'28"
R = 233.50'	R = 200.00'	R = 180.00'	R = 200.00'	R = 380.00'
L = 231.42'	L = 323.89'	L = 138.99'	L = 120.14'	L = 174.70'



STEVE MILLER LAND SURVEYING		
1240 SOUTHRIDGE COURT - HURST, TEXAS 76053 PHONE (817) 282-7860		
DRAWN BY: CORA MILLER	DATE: November 25, 1985	JOB NO.: 86041
REVISED: 1-5-87 Added one Guy Wire Easement		
PAGE 3 OF 3		