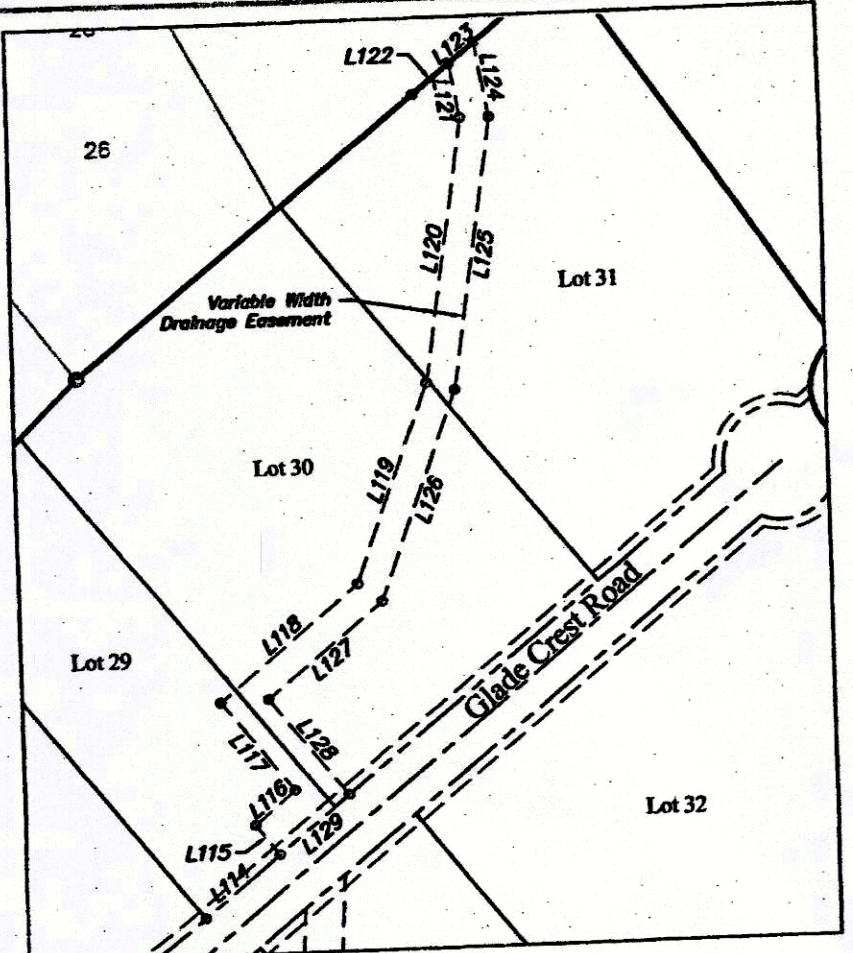
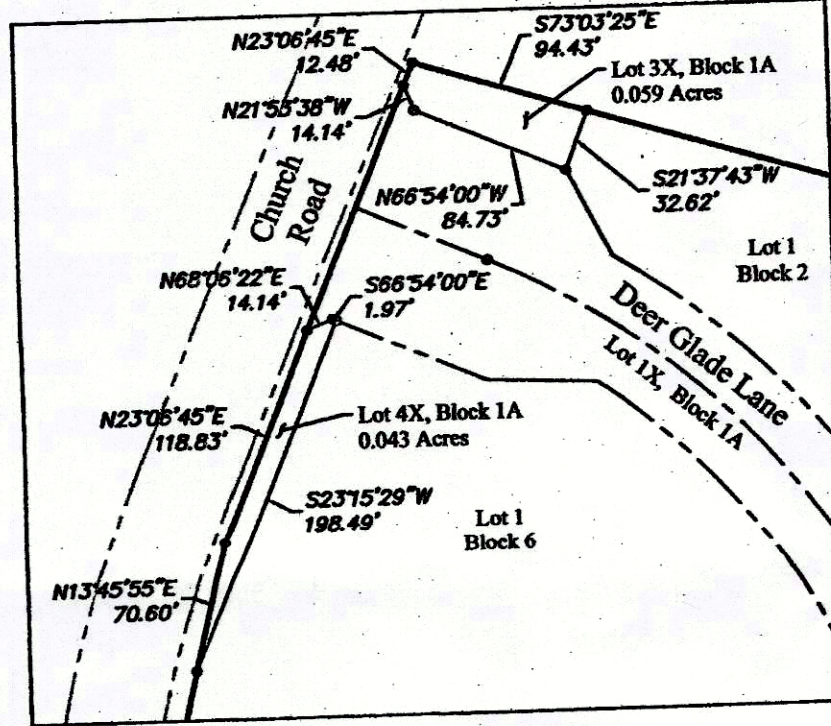


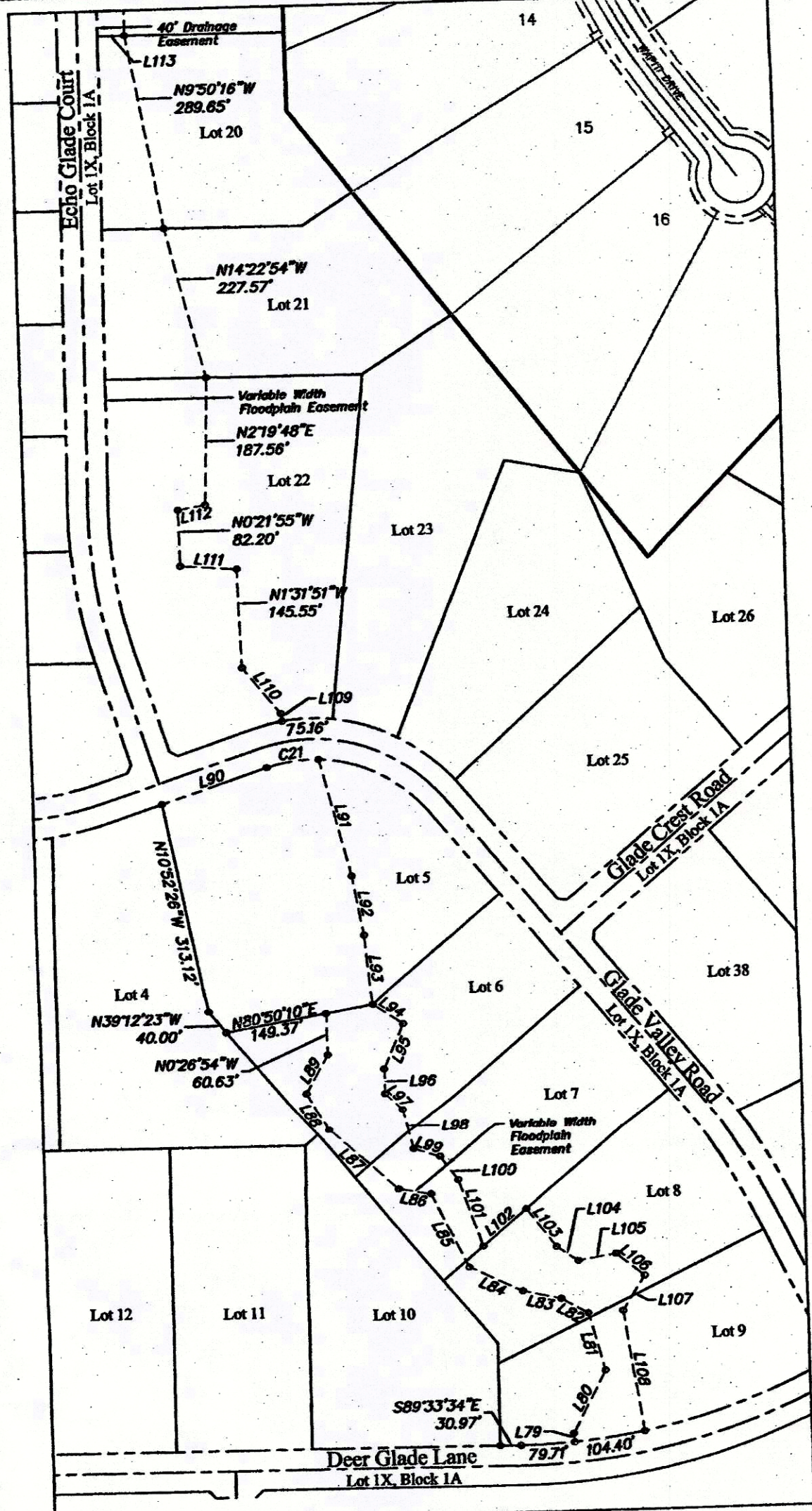
INSET 'A'
1"=200'



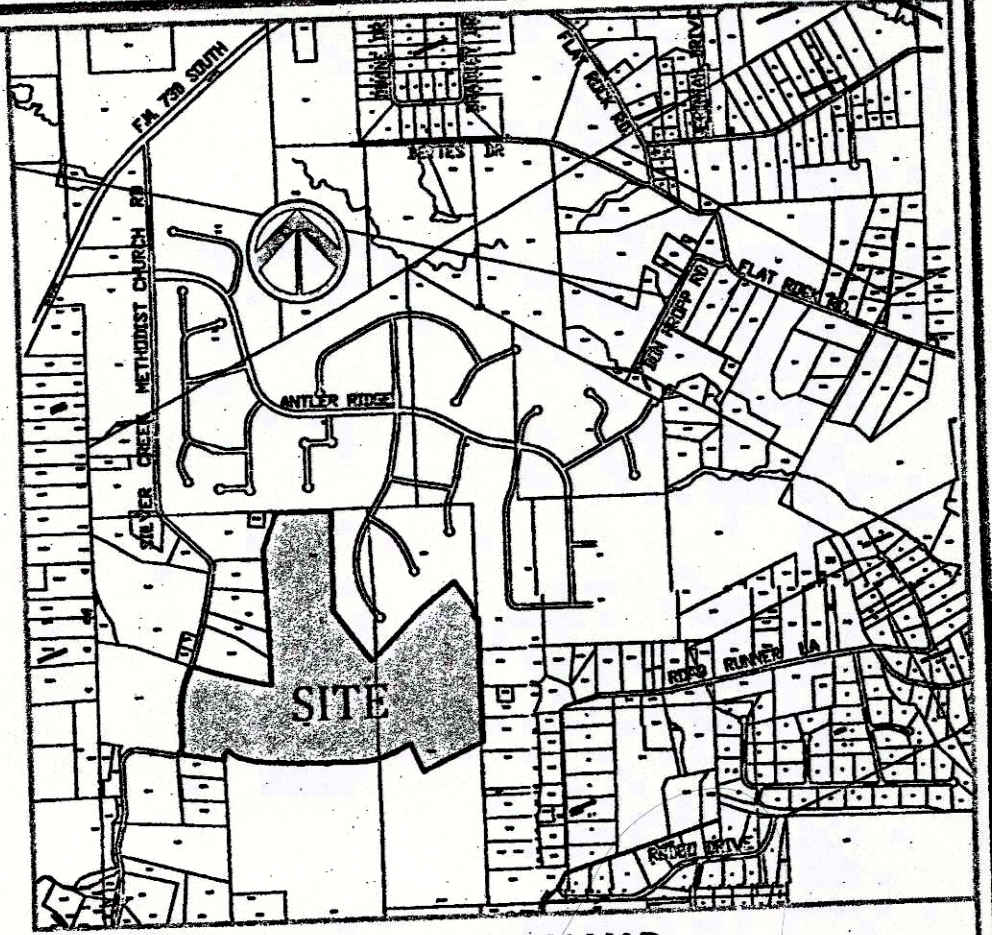
INSET 'B'
1"=200'



INSET 'C'
1"=100'



INSET 'D'
1"=200'



VICINITY MAP
Not To Scale

OWNER / DEVELOPER: DEER RIDGE, LTD.
777 TAYLOR STREET
SUITE 1040
FORT WORTH, TEXAS 76102
(817)-877-9992

ENGINEER: DUNAWAY ASSOCIATES, L.P.
550 BAILEY AVENUE
SUITE 400
FORT WORTH, TX 76107
(817)-335-1121

SURVEYOR: FULTON SURVEYING, INC.
115 ST. LOUIS AVENUE
FORT WORTH, TX 76104
(817)-335-3625

SURVEYOR: TEXAS SURVEYING, INC.
208 S. FRONT STREET
ALEDO, TX 76008
(817)-441-5263

Final Plat of
Deer Glade
(Phase 1)
Lots 1 - 17, Block 1
Lots 1 - 38, Block 2
Lots 1 - 11, Block 3
Lots 1 - 5, Block 6
and
Lots 1X - 4X, Block 1A

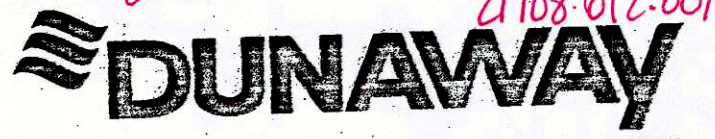


An Addition to Parker County, Texas, (City of Fort Worth ETJ) situated in the L.M. Rodarmel Survey, Abstract No. 1108 and the William Elliott Survey, Abstract No. 2382

71 Lots 181.635 Acres

This plat was prepared in April 2019 by Dunaway Associates, L.P.

Ref. Case No. PP-18-070



550 Bailey Avenue • Suite 400 • Fort Worth, Texas 76107
Tel: 817.335.1121 (TX REG. F-1114)

Sheet 2 of 5

FP-19-040

| Curve # | Length | Radius | Delta | Chord Bearing | Chord Distance |
|---------|---------|---------|-----------|---------------|----------------|
| C19 | 78.63' | 70.00' | 64°21'32" | N6°30'02"E | 74.56' |
| C20 | 24.47' | 30.00' | 46°43'37" | N26°55'08"E | 23.79' |
| C21 | 57.09' | 70.00' | 46°43'37" | S26°55'08"W | 55.52' |
| C22 | 33.70' | 30.00' | 64°21'32" | S6°30'02"W | 31.95' |
| C23 | 196.09' | 275.00' | 40°51'19" | S5°15'04"E | 191.96' |
| C24 | 88.02' | 225.89' | 22°19'33" | N14°28'16"W | 87.46' |

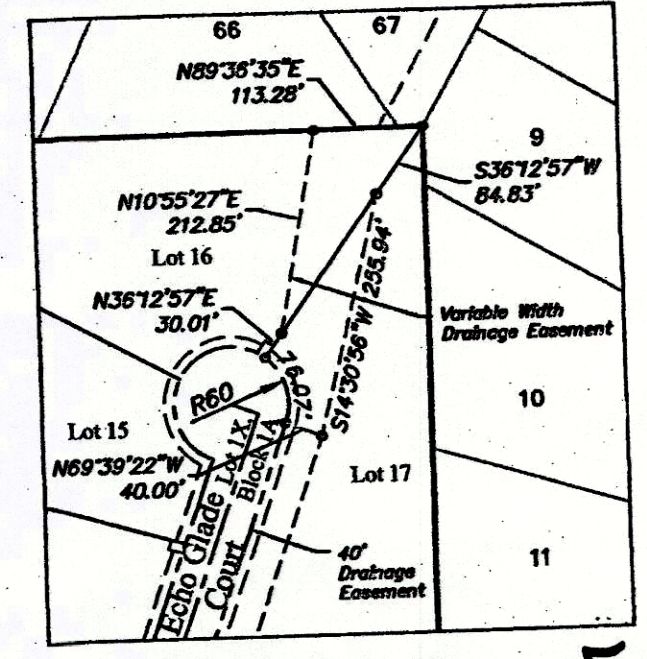
| Inset 'A' Line Table | | |
|----------------------|---------------|-------------|
| Line Number | Line Bearing | Line Length |
| L130 | S64° 19' 16"W | 141.00 |
| L131 | S25° 40' 44"E | 3.88 |
| L132 | N25° 40' 44"W | 94.10 |
| L133 | N25° 40' 44"W | 3.88 |
| L134 | S64° 19' 16"W | 17.00 |
| L135 | N64° 19' 16"E | 202.68 |
| L136 | N4° 19' 16"E | 34.64 |
| L137 | N25° 40' 44"W | 108.54 |
| L138 | N38° 40' 48"E | 251.90 |
| L139 | N8° 11' 41"E | 174.42 |
| L140 | N22° 51' 45"E | 374.27 |
| L141 | N50° 16' 56"E | 75.59 |
| L142 | N3° 32' 22"E | 158.06 |
| L143 | S51° 08' 51"W | 62.76 |
| L144 | N51° 08' 51"E | 54.16 |
| L145 | S3° 32' 23"W | 194.59 |
| L146 | S50° 16' 56"W | 65.83 |
| L147 | S22° 51' 45"W | 359.36 |
| L148 | S8° 11' 41"W | 180.18 |
| L149 | S38° 40' 48"W | 262.80 |
| L150 | S25° 40' 44"E | 108.54 |
| L151 | S55° 40' 44"E | 34.64 |
| L152 | S64° 19' 16"W | 74.64 |

| Inset 'B' Line Table | | |
|----------------------|---------------|-------------|
| Line Number | Line Bearing | Line Length |
| L114 | N51° 08' 51"E | 102.03 |
| L115 | N38° 51' 09"W | 40.00 |
| L116 | N51° 08' 51"E | 54.97 |
| L117 | N38° 51' 09"W | 119.68 |
| L118 | N51° 08' 51"E | 187.76 |
| L119 | N20° 37' 01"E | 220.05 |
| L120 | N8° 44' 56"E | 277.00 |
| L121 | N9° 28' 23"W | 57.07 |
| L122 | S51° 29' 59"W | 49.86 |
| L123 | N51° 29' 59"E | 34.31 |
| L124 | S9° 28' 23"E | 78.53 |
| L125 | S8° 44' 56"W | 284.93 |
| L126 | S20° 37' 01"W | 231.36 |
| L127 | S51° 08' 51"W | 155.95 |
| L128 | S38° 51' 09"E | 129.68 |
| L129 | S51° 08' 51"W | 94.97 |

| Inset 'D' Line Table | | |
|----------------------|---------------|-------------|
| Line Number | Line Bearing | Line Length |
| L79 | N4° 16' 04"W | 12.70 |
| L80 | N28° 39' 23"E | 104.18 |
| L81 | N15° 03' 55"W | 87.58 |
| L82 | N60° 04' 54"W | 45.57 |
| L83 | N77° 36' 21"W | 57.60 |
| L84 | N64° 34' 00"W | 86.81 |
| L85 | N25° 52' 43"W | 120.90 |
| L86 | N80° 23' 36"W | 48.48 |
| L87 | N47° 53' 01"W | 135.89 |
| L88 | N28° 32' 18"W | 66.72 |
| L89 | N30° 00' 53"E | 65.90 |
| L90 | S72° 23' 11"W | 163.86 |
| L91 | N14° 12' 34"W | 178.41 |
| L92 | N10° 14' 32"W | 89.33 |
| L93 | N5° 04' 41"W | 102.24 |
| L94 | N56° 11' 22"W | 52.88 |
| L95 | N24° 26' 09"E | 72.32 |

| Inset 'D' Line Table | | |
|----------------------|---------------|-------------|
| Line Number | Line Bearing | Line Length |
| L96 | N0° 41' 33"W | 37.23 |
| L97 | N44° 59' 29"W | 35.74 |
| L98 | N12° 42' 27"W | 64.02 |
| L99 | N73° 24' 34"W | 40.22 |
| L100 | N36° 20' 19"W | 43.33 |
| L101 | N19° 16' 37"W | 105.09 |
| L102 | S50° 47' 37"W | 83.97 |
| L103 | N37° 20' 27"W | 71.44 |
| L104 | N56° 21' 22"W | 38.20 |
| L105 | S81° 07' 58"W | 56.73 |
| L106 | N50° 48' 27"W | 52.69 |
| L107 | N33° 10' 31"E | 60.93 |
| L108 | N8° 16' 53"W | 179.27 |
| L109 | N8° 35' 07"W | 11.41 |
| L110 | N38° 06' 39"W | 87.71 |
| L111 | N85° 28' 14"W | 83.49 |
| L112 | N80° 37' 36"E | 40.89 |

| Inset 'D' Line Table | | |
|----------------------|---------------|-------------|
| Line Number | Line Bearing | Line Length |
| L113 | N89° 33' 34"W | 40.00 |



INSET 'E'
1"=200'

E-368
E-377 Replaces this plat (E-368)