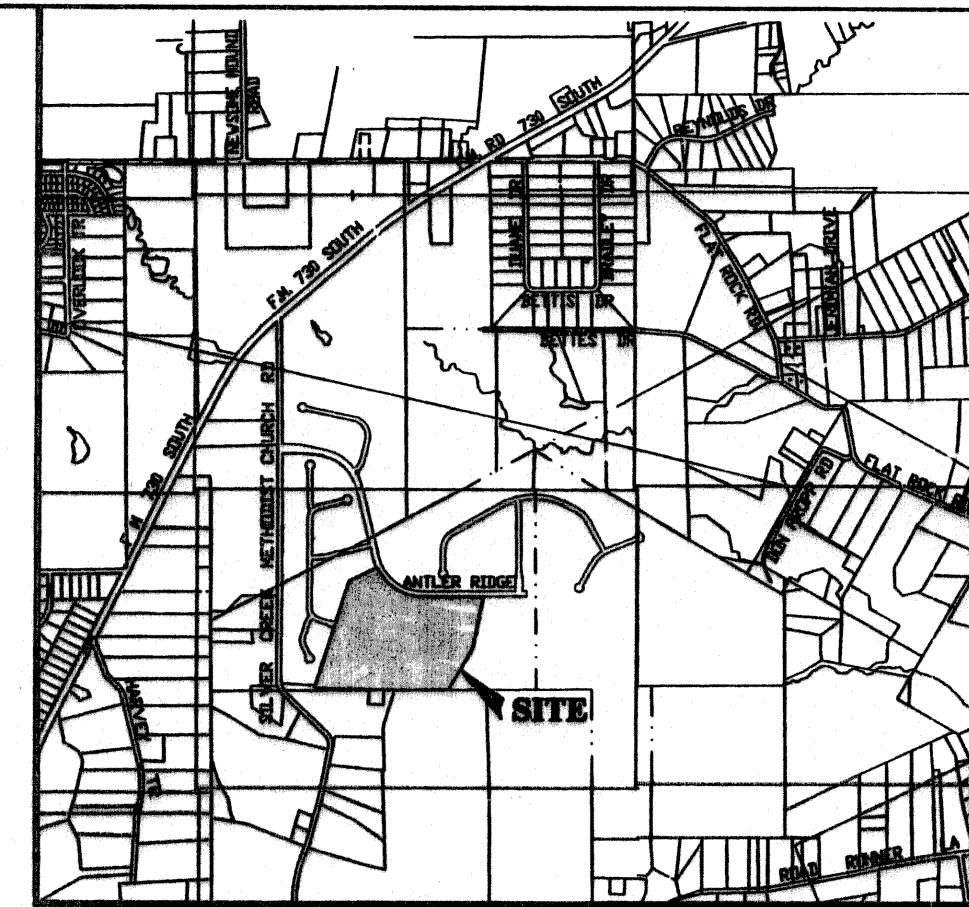
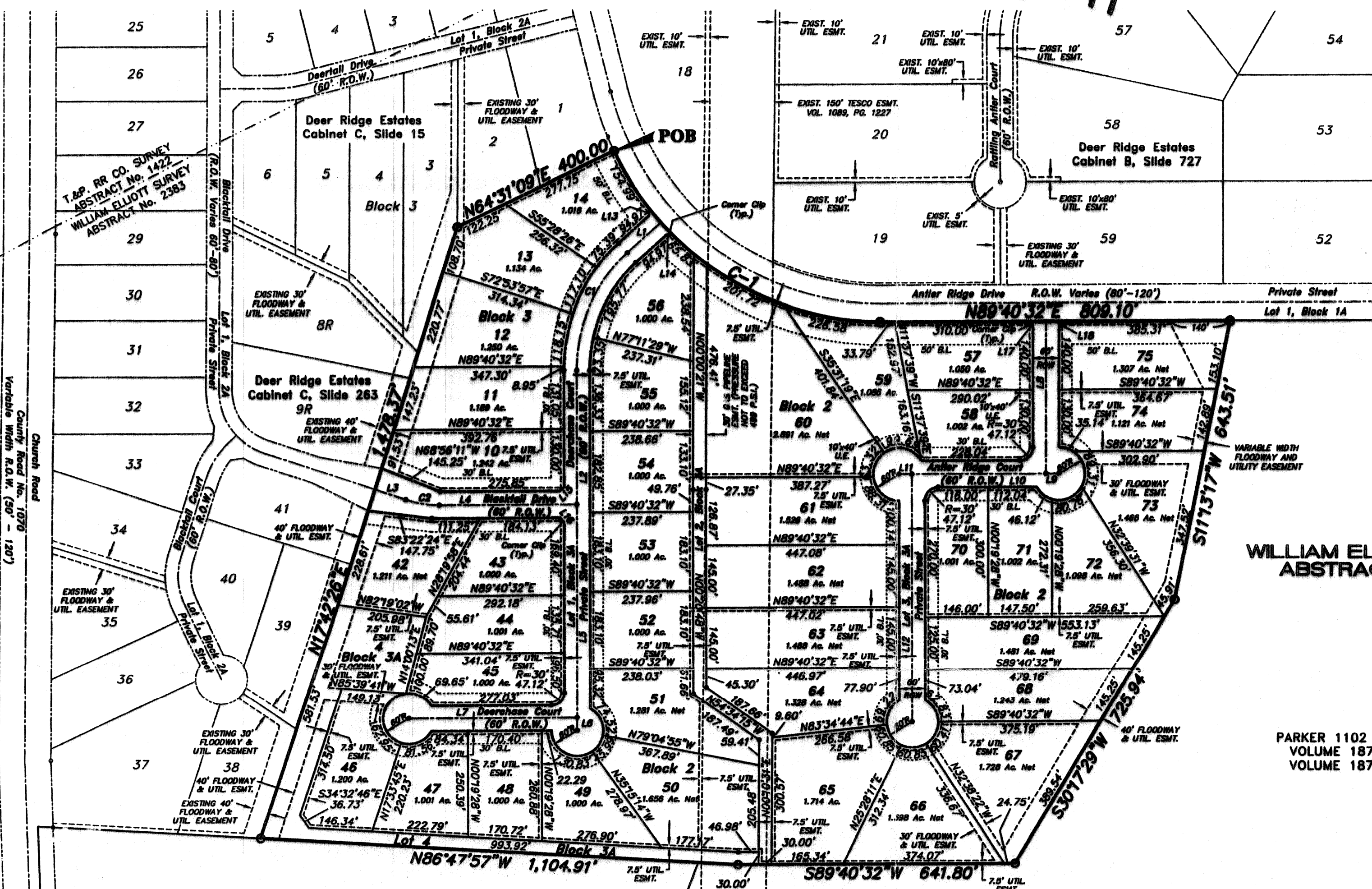


C-394



VICINITY MAP

WILLIAM ELLIOTT SURVEY  
ABSTRACT NO. 2383

ENGINEER:  
DUNAWAY ASSOCIATES, L.P.  
1501 MERRIMAC CIRCLE #100  
FT. WORTH, TEXAS 76107  
(817) 335-121

SURVEYOR:  
HARLAN LAND SURVEYING, INC.  
215 EAST EUREKA  
WEATHERFORD, TEXAS 76086  
(817) 599-0883

PARKER 1102 HOLDINGS LTD.  
VOLUME 1877, PAGE 942  
VOLUME 1877, PAGE 924

OWNER/DEVELOPER:  
MILL STREAM COMPANY  
1525 MERRIMAC CIRCLE SUITE 220  
FORT WORTH, TEXAS 76107  
(817) 336-6606



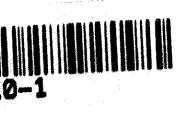
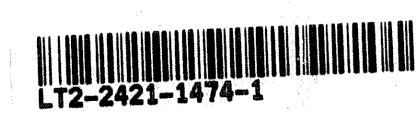
LYNN PIERCY  
VOLUME 1097, PAGE 1015

WILLIAM ELLIOTT SURVEY  
ABSTRACT No. 2383  
L.M. RODARME SURVEY  
ABSTRACT No. 1108

L.M. RODARME SURVEY  
ABSTRACT NO. 1108

CENTERLINE DATA		BOUNDARY DATA	
L1 S47°51'42"W - 104.31'	L10 S89°40'32"W - 310.00'	C-1 Δ = 64°37'00"	
L2 S00°19'28"E - 301.05'	L11 S89°40'32"W - 30.00'	R = 680.00'	
L3 S72°17'34"E - 74.78'	L12 S00°19'28"E - 580.00'	T = 430.02'	
L4 N89°40'32"E - 318.08'	L13 N04°20'12"E - 14.50'	L = 766.88'	
L5 S00°19'28"E - 501.61'	L14 S88°36'48"E - 14.50'	L.C. = 726.89'	
L6 S00°19'28"E - 30.00'	L15 S44°40'32"W - 14.14'	S 58°00'58" E	
L7 S89°40'32"W - 388.99'	L16 S45°19'28"E - 14.14'		
L8 S00°19'28"E - 340.00'	L17 N45°19'28"W - 14.14'		
L9 N89°40'32"E - 30.00'	L18 N44°40'32"E - 14.14'		

C1 Δ = 48°11'10"	C2 Δ = 18°01'54"
R = 350.00'	R = 250.00'
T = 156.51'	T = 39.67'
L = 294.35'	L = 78.68'
L.C. = 285.75'	L.C. = 78.35'
S 23°46'07" W	S 81°18'31" E



Scale: 1" = 200'

A FINAL PLAT OF  
**LOTS 42 THRU 75, BLOCK 2**  
**LOTS 10 THRU 14, BLOCK 3**  
 AND  
**LOTS 1 THRU 4, BLOCK 3A**  
**DEER RIDGE ESTATES III**

AN ADDITION TO PARKER COUNTY, TEXAS, BEING SITUATED IN THE  
 WILLIAM ELLIOTT SURVEY, ABSTRACT No. 2383, PARKER COUNTY, TEXAS.

**43 LOTS**                      **57.331 ACRES**  
 THIS PLAT WAS PREPARED IN JULY, 2005  
 THIS PLAT FILED IN CABINET \_\_, SLIDE NO. \_\_\_\_