

**REPLAT OF
DIAMOND OAKS SUBDIVISION**
 BEING A PART OF THE J. C.
 RIDER SUR. AB. - 2505, W. W.
 JOHNSON SUR. AB. - 2893 AND
 THE T. B. P. R.R. CO. SUR. BLK.-
 3 AB. - 1513.
PARKER COUNTY, TEXAS.

104499 A-473

RECEIVED AND FILED
 FOR RECORD
 At 9:30 o'clock
 MAY 22 1985

CARRIE REED, Co. Clerk
 PARKER COUNTY, TEXAS
 By Deputy

10.00 pd

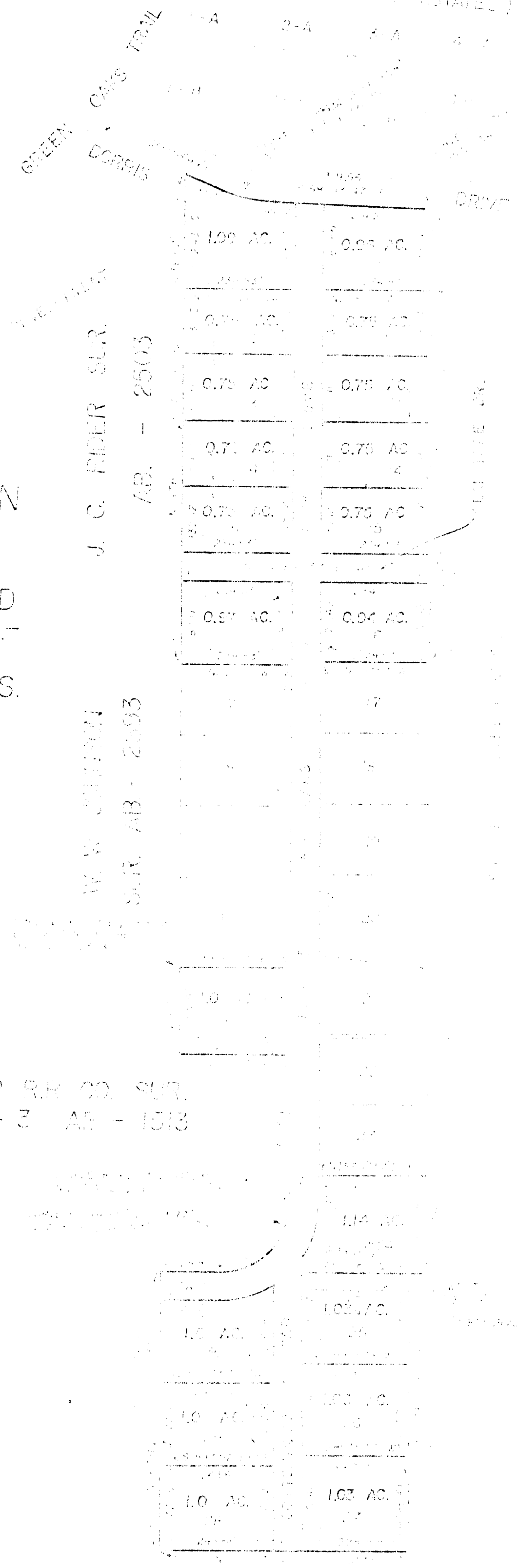
Vol 363 A page 26

STATE OF TEXAS COUNTY OF PARKER
 I hereby certify that this instrument was filed
 on the date and time stamped hereon by me and
 was duly recorded in the volume and page of the
 named records of Parker County as stamped here-
 on by me.

RECORDED MAY 22 1985

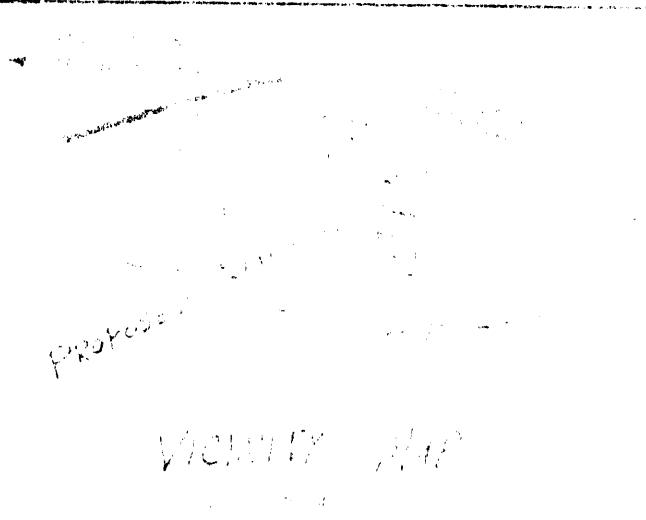


Carrie Reed
 County Clerk, Parker County, Tex.



T. B. P. R.R. CO. SUR.
 BLK - 3 AB - 1513

Survey description text starting with 'The land shown on the plat is part of the J. C. Rider Survey, Abstract...' and 'Green Corrias Drive, 100 feet wide...'. The text describes the layout and area of various lots within the subdivision.



(Handwritten signature or initials)