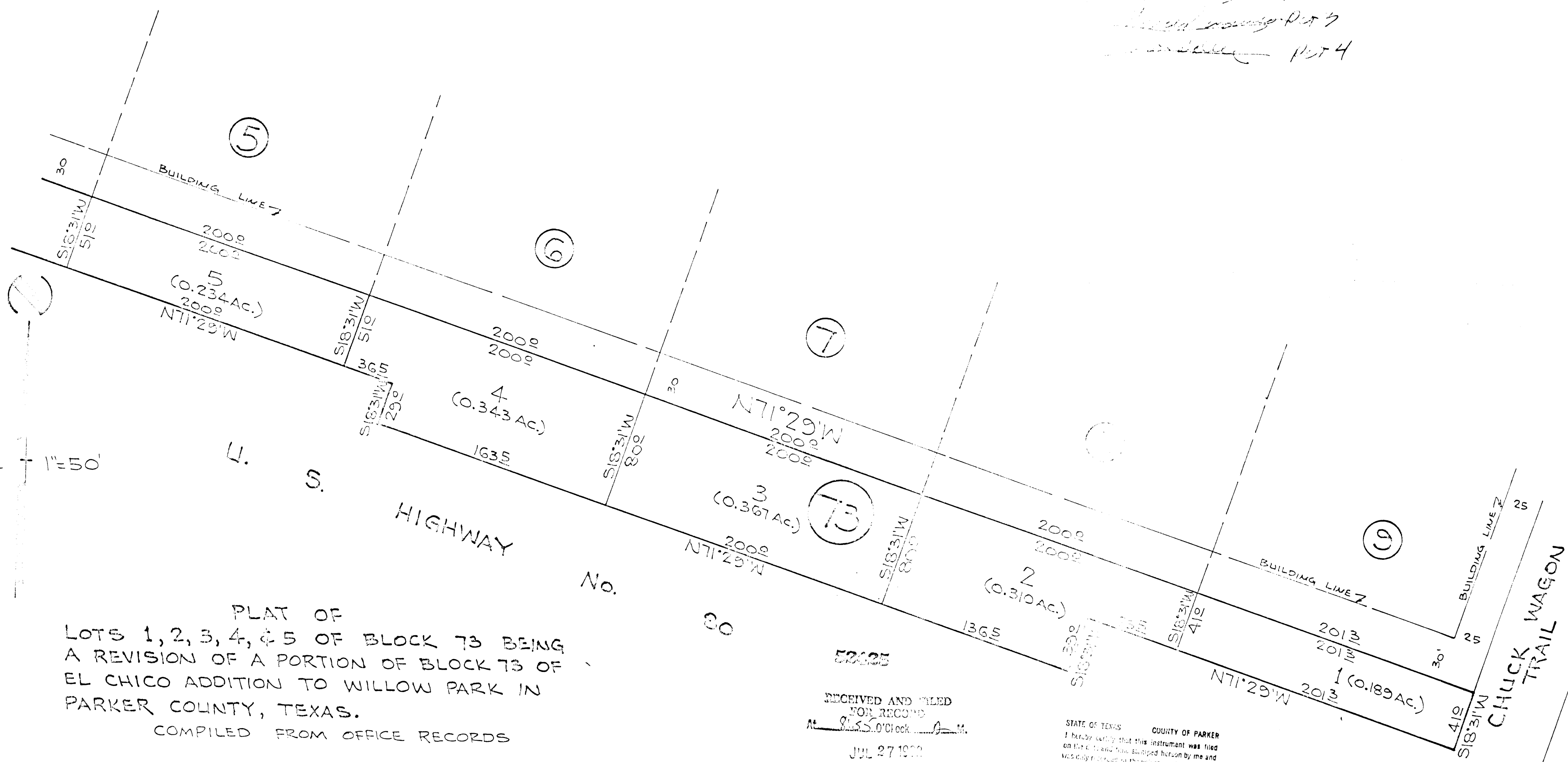


July 14, 1932
 Public
 Part 1
 Part 2
 Part 3
 Part 4



SCALE 1"=50'

PLAT OF
 LOTS 1, 2, 3, 4, & 5 OF BLOCK 73 BEING
 A REVISION OF A PORTION OF BLOCK 73 OF
 EL CHICO ADDITION TO WILLOW PARK IN
 PARKER COUNTY, TEXAS.

COMPILED FROM OFFICE RECORDS

KENNETH W. SMITH
 REGISTERED PUBLIC SURVEYOR No. 1632

RECEIVED AND FILED
 FOR RECORD
 At 8:55 O'clock P.M.
 JUL 27 1932
 CARRIE REED, Co. Clerk
 PARKER COUNTY, TEXAS
 By: Deputy

STATE OF TEXAS COUNTY OF PARKER
 I hereby certify that this instrument was filed
 on the 27th day of July 1932 hereon by me and
 was duly recorded in the volume and page of the
 public records of this County as stipulated here-
 in by me.
 JUL 27 1932
 Carrie Reed
 County Clerk, Parker County, Tex.

Book 362A
 Pg 7