

BLK. 68
BLK. 69

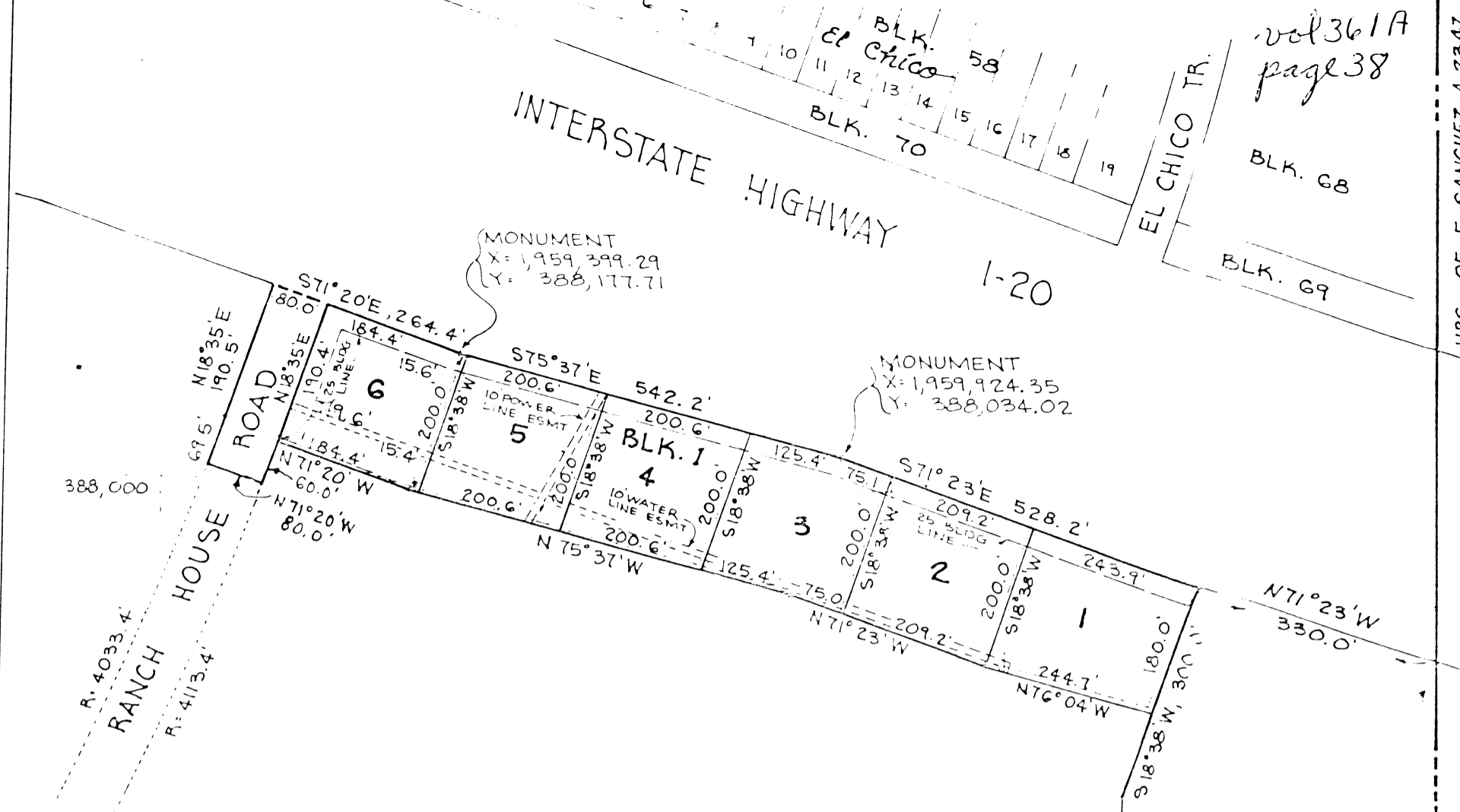
INTERSTATE HIGHWAY
I-20

EL CHICO TR.

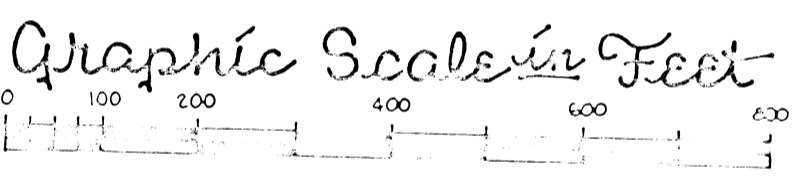
HRS. OF F. SANCHEZ A-2347

MONUMENT
X: 1,959,399.29
Y: 388,177.71

MONUMENT
X: 1,959,924.35
Y: 388,034.02



UTIL. ESMTS. ARE 5' ON EITHER SIDE OF LOT LINES UNLESS OTHERWISE SHOWN.



JOHN COLE SUR. A-218
N.O.G.F. 1985 F.

PHILIPS SUR. A-1046

JOHN COLE SUR. A-218

J.S. OXER SUR. A-1029

A.J. HOOD SUR. A-2587

Approved ~
 CITY COUNCIL
 CITY of WILLOW PARK, TEXAS
 BY [Signature]
 MAYOR
 DATE 3-1-79

STATE OF TEXAS COUNTY OF PARKER
 I hereby certify that this instrument was filed on the date and time stamped herein by me and was duly recorded in the volume and page of the public records of Parker County as stamped hereon by me.
 RECORDED MAR 14 1979



[Signature]
 County Clerk, Parker County, Texas

032-5
 RECEIVED AT THE FIELD FOR RECORD
 AT 8:30 AM MAR 14 1979
 CARRIE REFD. Clerk PARKER COUNTY TEXAS
 By [Signature] Deputy

LOTS 1-6, BLOCK 1
 EL CHICO TRAIL
 in the JOHN COLE SURVEY A-218
 WILLOW PARK, PARKER COUNTY, TEXAS

SURVEYED DEC. 1978 BROWN and DAVIES ENGRS. FT. WORTH
 NOTE: COORDINATES AND BEARINGS ARE ON THE TEXAS COORDINATE SYSTEM, NORTH CENTRAL ZONE. DISTANCES ARE HORIZONTAL GROUND MEASUREMENTS. COMBINED GRID AND ELEVATION FACTOR IS 0.9998386.

[Signature]