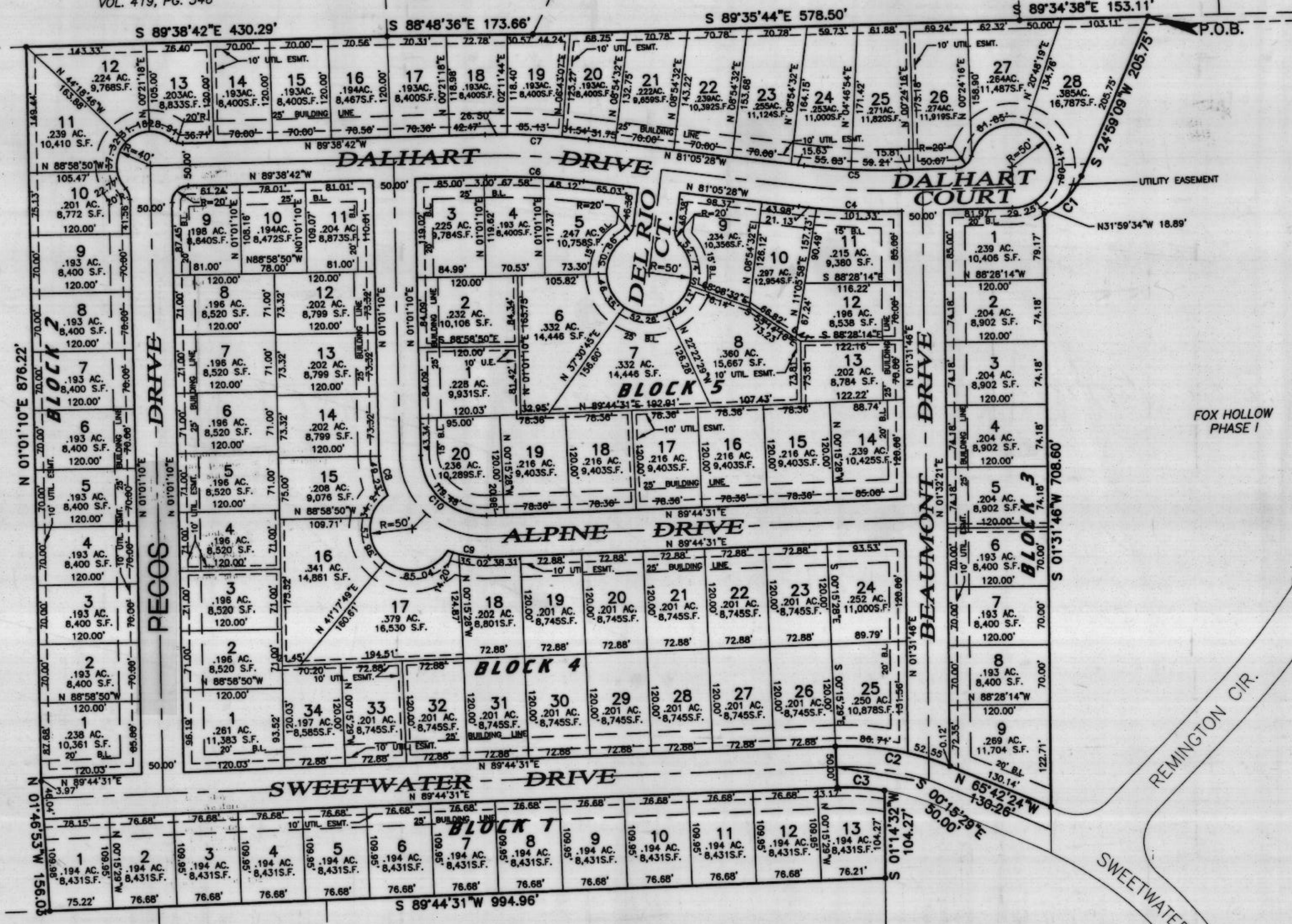


SCOTT TO BARBEE
VOL. 419, PG. 346

MOCHA TO COPPOCK
VOL. 1338, PG. 191

BARBEE TO REEDER
VOL. 376, PG. 379

D.L. McCARTY
VOL. 1650, PG. 1638



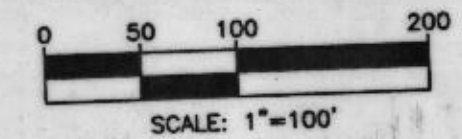
WARD TO WARD
VOL. 1202, PG. 1332

K.C.A. TO GAS &
OIL TO OGDIE
VOL. 1185, PG. 1270

ZACHMEYER TO PRICE
VOL. 1127, PG. 1255

H. & S. ADDITION

CURVE	RADIUS	TANGENT	LENGTH	DELTA	DEGREE	CHORD	CH. BEARING
C1	88.29'	33.77'	64.52'	41°52'03"	84°53'42"	63.09'	S 45°55'10"W
C2	325.00'	70.72'	139.28'	24°33'08"	17°37'46"	138.20'	N 77°58'56"W
C3	275.00'	28.18'	56.17'	11°42'08"	20°50'05"	56.07'	S 84°24'25"E
C4	825.00'	61.34'	122.46'	8°30'17"	6°56'42"	122.36'	N 85°20'36"W
C5	775.00'	57.62'	115.04'	8°30'17"	7°23'35"	115.60'	N 85°22'05"W
C6	775.00'	57.96'	115.71'	8°33'15"	6°56'42"	123.06'	N 85°22'03"W
C7	825.00'	61.70'	123.17'	8°33'15"	45°50'12"	48.91'	N 10°15'47"W
C8	125.00'	24.94'	49.23'	22°33'53"	45°50'12"	48.91'	N 78°58'32"W
C9	125.00'	24.94'	49.23'	22°33'53"	45°50'12"	107.24'	N 44°37'09"W
C10	75.00'	76.89'	119.48'	91°16'39"	76°23'40"		



374005 PCB 45

RECEIVED AND FILED
FOR RECORD
10:40 O'Clock A.M.

OCT 13 1998

Jeanne Brunson, Co. Clerk
PARKER COUNTY, TEXAS

STATE OF TEXAS COUNTY OF PARKER
I hereby certify that the instrument was filed on
the date and time stamped herein by me and
was duly recorded in the volume and page of
the named records of Parker County as
stamped herein by me.

RECORDED OCT 13 1998



FOX HOLLOW
PHASE I

REMINOTON CIR.
SWEETWATER DRIVE

FINAL PLAT
FOX HOLLOW
PHASE II
CITY OF WEATHERFORD
PARKER COUNTY, TEXAS
SEPTEMBER, 1998

BARNETT ENGINEERING, INC.
CONSULTING ENGINEERS - PLANNERS - DESIGNERS
P.O. Box 1485 • Mineral Wells, Texas 76068 • 940-325-9417

ALL EASEMENTS SHALL BE DRAINAGE AND UTILITY EASEMENTS