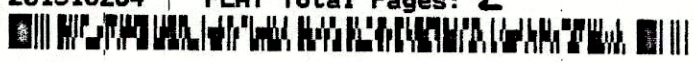


201918284 PLAT Total Pages: 2


BOUNDARY LINE TABLE

LINE	BEARING	DISTANCE
BL1	S 89°43'57" E	248.86'
BL2	N 89°39'16" E	122.19'
BL3	S 89°56'18" E	261.99'
BL4	N 89°39'52" W	313.63'

LOT LINE TABLE

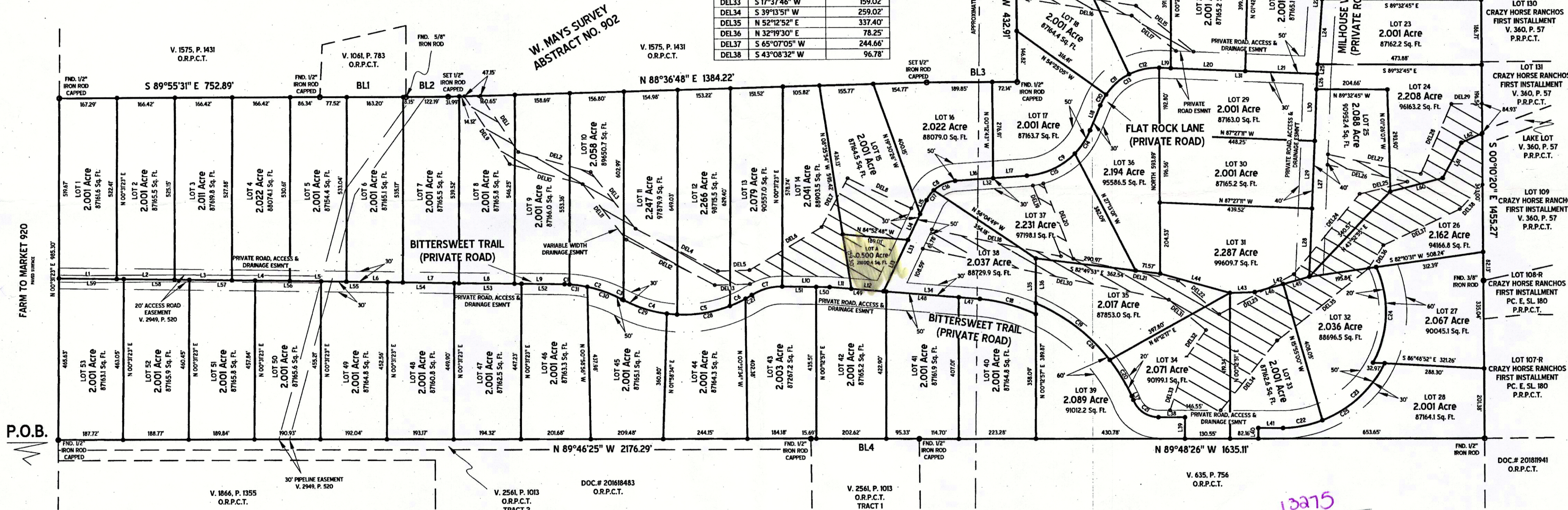
LINE	BEARING	DISTANCE
L1	N 88°59'05" W	167.29'
L2	N 88°59'05" W	166.42'
L3	N 88°59'05" W	166.42'
L4	N 88°59'05" W	166.42'
L5	N 88°59'05" W	163.86'
L6	N 88°59'05" W	163.20'
L7	N 88°59'05" W	162.30'
L8	N 88°59'05" W	160.56'
L9	N 88°59'05" W	144.64'
L10	N 88°59'05" W	137.57'
L11	N 85°24'59" W	62.75'
L12	N 85°24'59" W	93.59'
L13	S 25°39'34" W	164.32'
L14	S 25°39'34" W	82.85'
L15	S 25°39'34" W	44.29'
L16	S 85°57'40" W	110.49'
L17	S 85°57'40" W	97.90'
L18	S 23°05'51" W	77.60'
L19	N 87°27'13" W	33.28'
L20	N 87°27'13" W	216.12'
L21	N 87°27'13" W	207.42'
L22	S 04°07'53" E	407.87'
L23	N 04°07'53" E	192.98'
L24	N 04°07'53" E	187.09'
L25	N 04°07'53" E	27.80'
L26	N 02°32'49" E	43.90'
L27	N 02°32'49" E	541.44'
L28	S 02°32'49" W	196.37'
L29	S 02°32'49" W	196.37'

L30	S 02°32'49" W	192.61'
L31	N 87°27'13" W	456.82'
L32	S 85°57'40" W	208.39'
L33	N 25°39'34" E	291.47'
L34	N 85°24'59" W	279.24'
L35	S 00°12'57" W	161.18'
L36	N 00°12'57" E	129.41'
L37	S 21°15'00" E	11.67'
L38	S 89°32'38" E	76.27'
L39	S 00°12'14" W	61.54'
L40	N 00°11'34" E	30.56'
L41	S 89°32'38" E	70.25'
L42	S 74°35'39" W	162.95'
L43	S 88°18'35" W	72.05'
L44	N 74°17'41" W	209.05'
L45	N 74°35'39" E	78.60'
L46	N 74°35'39" E	84.35'
L47	N 85°24'59" W	61.02'
L48	N 85°24'59" W	210.63'
L49	N 85°24'59" W	163.93'
L50	N 88°59'05" W	39.17'
L51	N 88°59'05" W	98.40'
L52	S 88°59'05" E	124.29'
L53	S 88°59'05" E	194.32'
L54	S 88°59'05" E	193.17'
L55	S 88°59'05" E	192.05'
L56	S 88°59'05" E	190.94'
L57	S 88°59'05" E	189.85'
L58	S 88°59'05" E	188.78'
L59	S 88°59'05" E	187.72'
L60	N 75°59'00" E	156.41'
L61	N 27°57'46" E	115.89'
L62	N 66°17'50" E	65.86'

EASEMENT LINE TABLE

LINE	BEARING	DISTANCE
DEL1	S 33°21'41" E	195.78'
DEL2	S 74°19'56" E	216.88'
DEL3	N 37°48'27" W	209.24'
DEL4	S 62°26'11" E	268.50'
DEL5	N 88°47'21" E	91.96'
DEL6	N 59°32'08" E	243.31'
DEL7	N 28°19'54" E	160.35'
DEL8	S 64°20'26" E	203.58'
DEL9	S 33°21'41" E	235.69'
DEL10	S 74°19'56" E	218.62'
DEL11	N 37°48'27" W	204.78'
DEL12	N 62°26'11" W	287.49'
DEL13	S 88°47'21" W	102.22'
DEL14	S 80°50'08" E	350.30'
DEL15	N 51°14'24" W	212.18'
DEL16	S 80°50'08" E	337.42'
DEL17	N 51°14'24" W	163.29'
DEL18	N 78°08'08" W	381.22'
DEL19	N 21°19'59" W	220.34'
DEL20	N 21°19'59" W	234.60'
DEL21	N 78°08'08" W	309.19'
DEL22	N 50°38'39" W	154.36'
DEL23	S 62°03'22" W	243.53'
DEL24	N 39°49'06" E	300.57'
DEL25	S 75°47'44" W	141.91'
DEL26	N 77°47'52" W	236.02'
DEL27	N 77°47'52" W	274.49'
DEL28	N 24°05'13" E	220.57'
DEL29	S 89°49'40" W	88.14'
DEL30	S 78°08'08" E	726.31'
DEL31	N 50°38'39" W	138.88'
DEL32	N 36°05'27" E	97.03'
DEL33	S 17°37'46" W	159.02'
DEL34	S 39°13'51" E	259.02'
DEL35	N 52°12'52" E	337.40'
DEL36	S 22°19'30" E	78.25'
DEL37	S 65°07'05" W	244.66'
DEL38	S 43°08'32" W	96.78'

T&P RR CO SURVEY
 SECTION 187
 ABSTRACT NO. 1440



LOT LINE TABLE

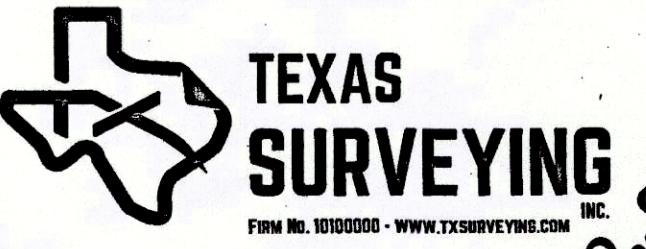
CURVE	RADIUS	ARC	CHORD BEARING	CHORD
C1	380.00'	13.98'	N 87°05'39" W	13.98'
C2	380.00'	159.92'	N 73°57'39" W	158.73'
C3	379.83'	4.24'	N 62°12'09" W	4.24'
C4	379.83'	161.41'	N 74°41'46" W	160.20'
C5	379.83'	156.22'	S 81°20'50" W	155.12'
C6	379.83'	70.42'	S 64°15'10" W	70.31'
C7	166.05'	92.95'	S 74°58'45" W	91.74'
C8	99.38'	104.60'	N 55°48'37" E	99.83'
C9	215.07'	235.97'	S 54°31'45" W	224.31'
C10	177.48'	35.57'	S 28°50'21" W	35.51'
C11	177.48'	89.78'	S 49°04'21" W	88.82'
C12	177.48'	89.78'	S 78°03'20" W	88.82'
C13	177.48'	215.13'	N 57°49'20" E	202.20'
C14	215.07'	79.98'	N 33°45'05" E	79.52'
C15	215.07'	155.98'	N 65°11'01" E	152.59'

C16	99.38'	68.54'	N 66°12'10" E	67.19'
C17	99.38'	36.05'	N 36°03'07" E	35.86'
C18	512.47'	169.10'	S 74°34'01" E	168.34'
C19	536.16'	271.60'	N 52°22'34" W	268.70'
C20	536.16'	122.09'	N 31°20'27" W	121.83'
C21	78.75'	93.95'	S 55°25'29" E	88.47'
C22	334.23'	116.94'	S 79°13'51" W	116.35'
C23	334.23'	249.28'	S 47°50'27" W	243.55'
C24	309.41'	284.79'	N 02°08'29" E	274.84'
C25	334.23'	366.22'	N 57°51'51" E	348.18'
C26	536.16'	393.69'	S 45°51'01" E	384.90'
C27	379.83'	20.93'	S 60°31'16" W	20.92'
C28	379.83'	235.38'	S 79°51'09" W	231.63'
C29	379.83'	135.98'	N 72°08'19" W	135.25'
C30	380.00'	107.52'	N 69°59'11" W	107.17'
C31	380.00'	66.37'	N 83°09'54" W	66.29'

RESERVED FOR
 COUNTY CLERK'S FILING
 INFORMATION

ACCT. NO.: 13715
 SCH. DIST.: PE
 CITY: F-12
 MAP NO.:
FINAL PLAT

**LOTS 1 - 53 & LOT A
 HIDDEN SPRINGS RANCH**
 AN ADDITION TO PARKER COUNTY, TEXAS.
 BEING A 108.767 ACRES TRACT OF LAND OUT OF THE
 W. MAYS SURVEY, ABSTRACT NO. 902 AND THE T&P
 RR CO SURVEY, SECTION 187, ABSTRACT NO. 1440,
 PARKER COUNTY, TEXAS
 JULY 2019



E-335

201918284.001.000.00 21440.006.000.00

SURVEYOR:
 KYLE RUCKER, R.P.L.S.
 104 S. WALNUT ST.
 WEATHERFORD, TX 76086
 817-594-0400

OWNER/DEVELOPER:
 CHAD BUSHAW
 301 MEASURES ROAD
 WEATHERFORD, TX 76088
 817-304-0233

0 200 400 600