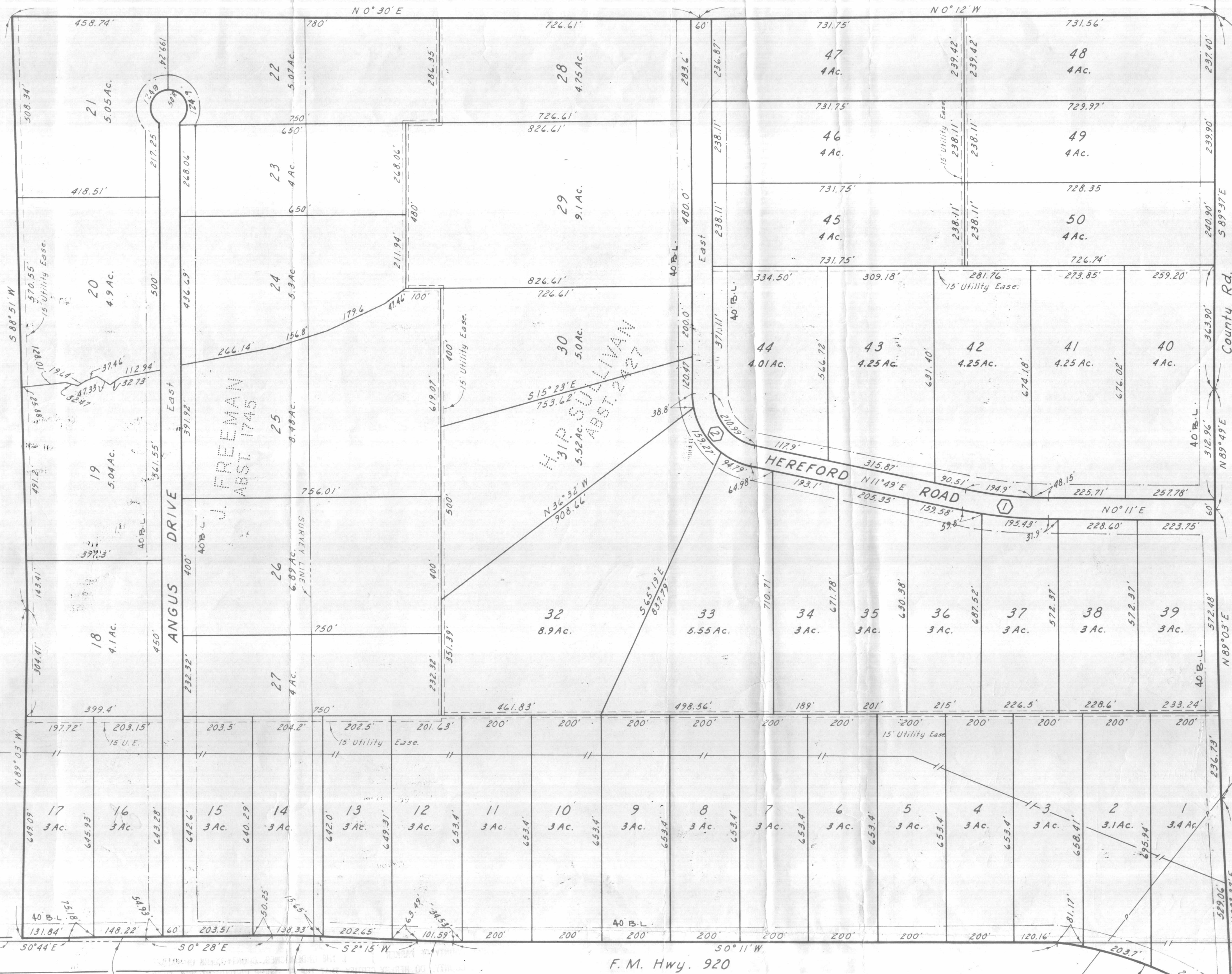


57-7



ε CURVE DATA

	Δ	T	R
①	11°38'	125.0'	1257.07'
②	78°11'	150.0'	214.63'

NOTE: All Lots To Have A 40' Bldg. Line Along Road R.O.W.

Singair Pipeline Easg. per Vol. 280, pg. 92, Parker County, Texas

Bragos Power Line Easg. as per Vol. 333, pg. 97, Parker Co. Records

SCALE 1" = 200'

LEGEND

○	STEEL RODS
●	IRON PIPE
—	POWER OR TELEPHONE LINE
-X-	FENCE
□	BOIS D'ARC STK.

Curve: R=4800.74, Δ=0°16', T=111.7', Ch=50°35'E-223.4'

Curve: R=2917.38, Δ=2°43', T=69.18', Ch=50°54'W-138.32'

Curve: R=2816.39, Δ=2°04', T=50.8', Ch=S1°13'W-101.59'

HILLS ADDITION

A Subdivision Out Of The H. P. SULLIVAN Survey, Abst. 2427, The J. FREEMAN Survey, Abst. 1745, And The G. A. BARNES Survey, Abst. 2578, Parker Co., Texas.

G.A. BARNES
ABST. 2578

Approved By Parker County Commissioners
This The 27 Day Of Feb 1970.

By: *[Signature]*

HUGHES SURVEYING CO.

REGISTERED PUBLIC SURVEYORS PARKER COUNTY SURVEYOR
131 W. Church St. WEATHERFORD, TEXAS LY 4-5374

I, *[Signature]* do hereby certify that this map is true and correct as surveyed on the ground.
Date Feb 1970 2884