

RECEIVED AND FILED
FOR RECORD
At 11:45 O'Clock P.M.

OCT 14 1985

CARRIE REED, Co. Clerk
PARKER COUNTY, TEXAS
By *[Signature]* Deputy

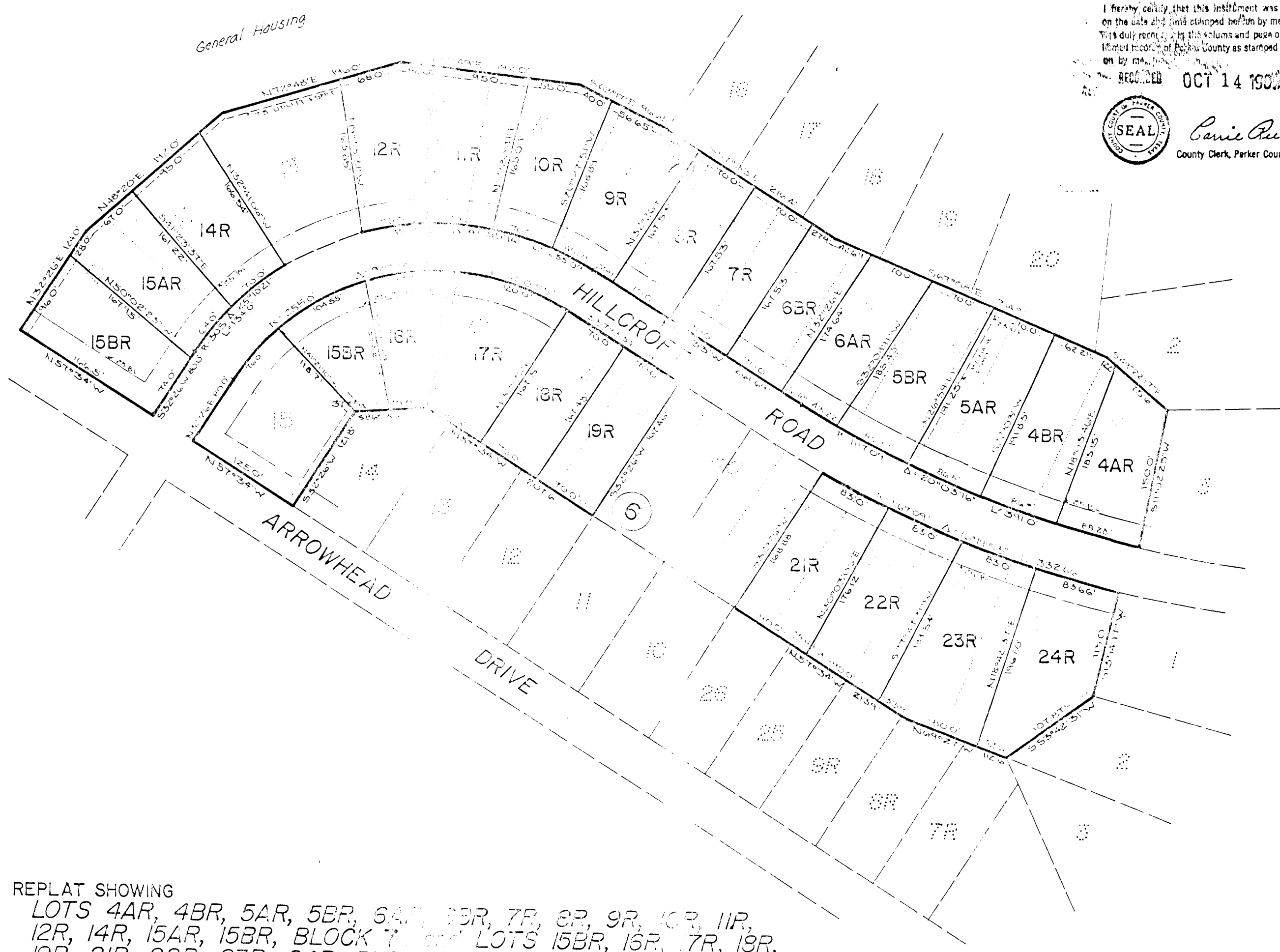
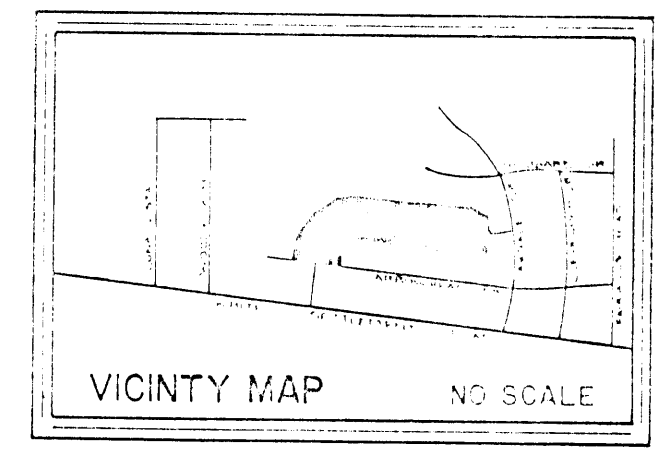
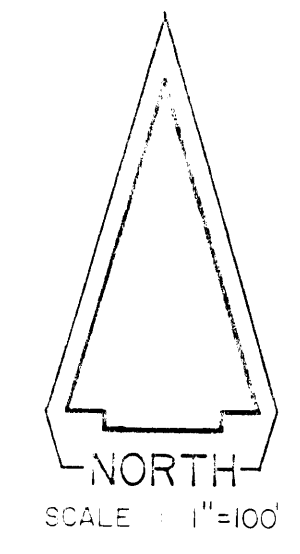
20.00pd

STATE OF TEXAS COUNTY OF PARKER
I hereby certify that this instrument was filed
on the date and time stamped hereon by me and
is a duly recorded instrument in the public records of Parker County as stamped hereon
on by me.

RECORDED OCT 14 1985



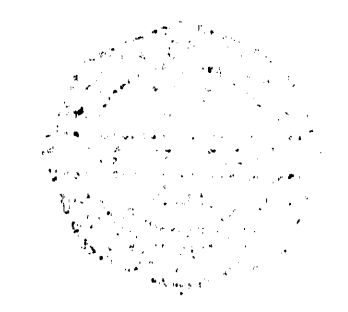
Carrie Reed
County Clerk, Parker County, Tex.



REPLAT SHOWING
LOTS 4AR, 4BR, 5AR, 5BR, 6AR, 6BR, 7R, 8R, 9R, 10R, 11R,
12R, 14R, 15AR, 15BR, BLOCK 7, AND LOTS 15BR, 16R, 17R, 18R,
19R, 21R, 22R, 23R, 24R, BLOCK 8
HILLTOP PARK - SECTION ONE
AN ADDITION TO MESA GRANDE VILLAGE, PARKER COUNTY, TEXAS

- BEING A REVISION OF LOTS 4, 5, 6, 7, 8, 9, 10, 11, 12, 13,
BLOCK 7, AND LOTS 16, 17, 18, 19, 21, 22, 23, 24, BLOCK
8, HILLTOP PARK - SECTION ONE, ACCORDING TO PLAT
RECORDED IN VOLUME 355, PAGE 230, D.R. 11111.

APPROVED *14 Oct* 1985
COMMISSIONERS OF
PARKER COUNTY, TEXAS
Wayne Swift
Chandra Sanders
Harold Adams
Don Cardwell
COUNTY CLERK
Gerald W. Budwell



R.A. Hoffinger
SURVEYING
REGISTERED PUBLIC SURVEYORS
JOB NO. 11-11
DATE 10-14-85
DRAWN BY
COMPILED BY
CHECKED BY
BY FACILE
AT WORTH, TEXAS