

BOUNDARY DATA		
NO.	BEARING	DIST
L1	N 79°24'01" W	132.33'
L2	N 44°46'44" W	71.82'
L3	S 80°37'03" W	34.06'
L4	S 32°21'48" W	101.45'

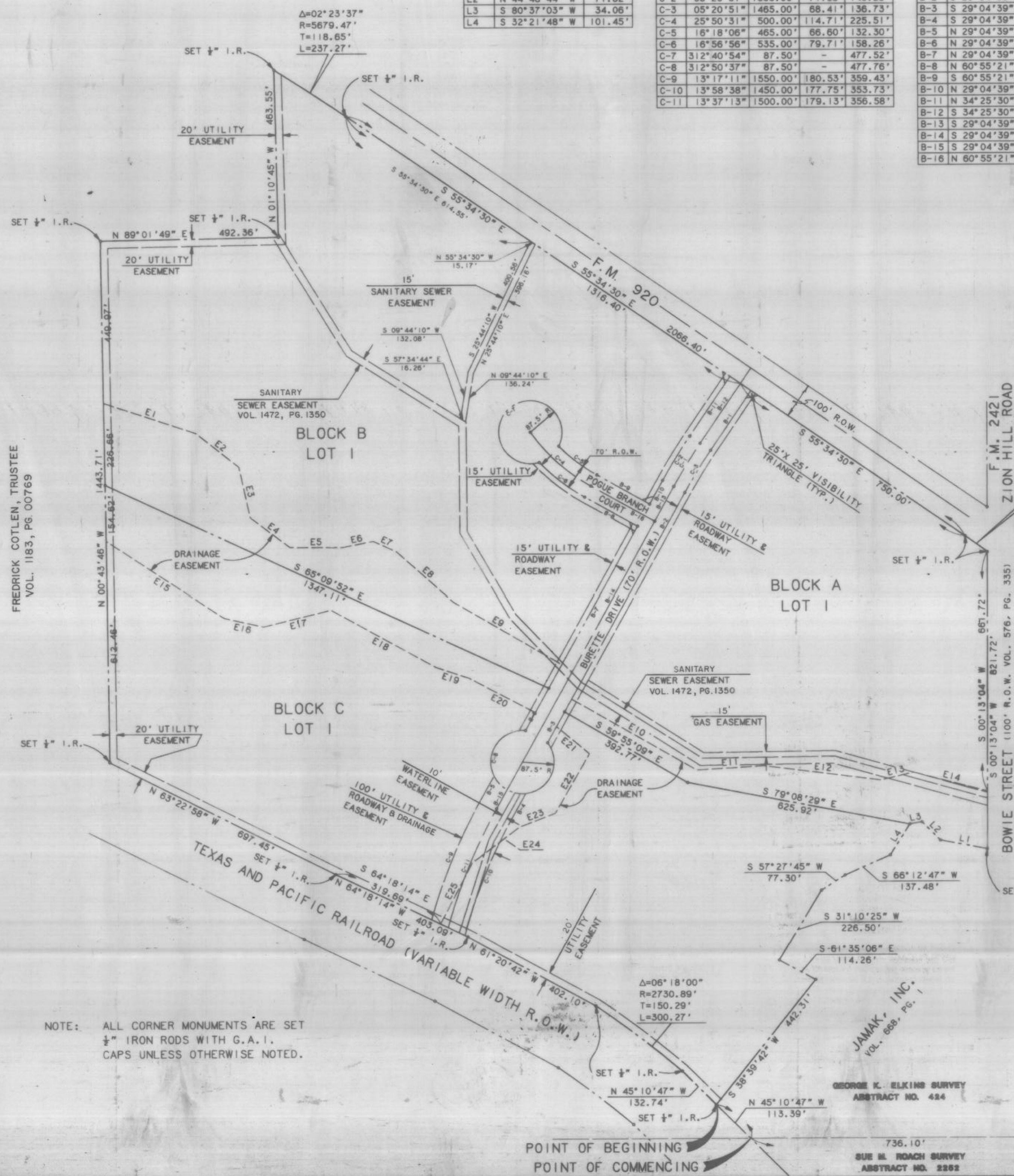
CURVE DATA			
NO.	DELTA	RADIUS	TANGENT LENGTH
C-1	05°20'51"	1500.00'	70.05'
C-2	05°20'51"	1535.00'	71.68'
C-3	05°20'51"	1465.00'	68.41'
C-4	25°50'31"	500.00'	114.71'
C-5	16°18'06"	465.00'	66.60'
C-6	16°56'56"	535.00'	79.71'
C-7	312°40'54"	87.50'	-
C-8	312°50'37"	87.50'	-
C-9	13°17'11"	1550.00'	180.53'
C-10	13°58'38"	1450.00'	177.75'
C-11	13°37'13"	1500.00'	179.13'

BEARING DATA		
NO.	BEARING	DIST
B-1	S 34°25'30" W	200.00'
B-2	S 29°04'39" W	692.29'
B-3	S 29°04'39" W	97.51'
B-4	S 29°04'39" W	75.66'
B-5	N 29°04'39" E	75.66'
B-6	N 29°04'39" E	134.18'
B-7	N 29°04'39" E	510.62'
B-8	N 60°55'21" W	167.06'
B-9	S 60°55'21" E	167.06'
B-10	N 29°04'39" E	75.00'
B-11	N 34°25'30" E	200.00'
B-12	S 34°25'30" W	251.82'
B-13	S 29°04'39" W	110.00'
B-14	S 29°04'39" W	760.00'
B-15	S 29°04'39" W	147.46'
B-16	N 60°55'21" W	202.06'

DRAINAGE EASEMENT		
NO.	BEARING	DISTANCE
E1	S 71°41'18" E	268.06'
E2	S 51°40'03" E	151.50'
E3	S 12°25'35" E	143.83'
E4	S 52°55'53" E	136.80'
E5	S 89°44'52" E	144.31'
E6	N 78°49'58" E	87.32'
E7	S 65°33'47" E	68.03'
E8	S 48°20'39" E	209.69'
E9	S 59°44'43" E	346.97'
E10	S 60°18'15" E	398.96'
E11	N 86°34'36" E	186.23'
E12	S 82°49'46" E	325.91'
E13	N 76°44'38" E	91.61'
E14	S 75°35'37" E	211.98'
E15	N 56°41'50" W	389.70'
E16	N 77°29'00" W	111.15'
E17	S 76°19'10" W	192.39'
E18	N 61°00'09" W	329.82'
E19	N 71°31'43" W	95.85'
E20	N 62°18'37" W	206.15'
E21	N 50°19'18" W	118.04'
E22	N 29°57'25" E	190.24'
E23	N 69°14'53" E	105.52'
E24	N 52°53'15" E	163.79'
E25	N 27°36'12" E	190.87'



LOCATION MAP

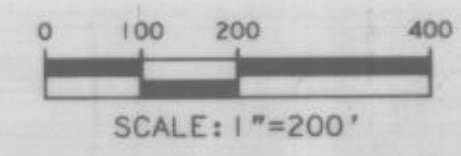


AREA SUMMARY

BLOCK A, LOT I	938,347 S.F.	21.54 AC.
BLOCK B, LOT I	1,592,276 S.F.	36.55 AC.
BLOCK C, LOT I	1,502,036 S.F.	34.48 AC.
STREET R.O.W.	148,364 S.F.	3.41 AC.
TOTALS	4,181,023 S.F.	95.98 AC.

FREDRICK COTLEN, TRUSTEE
VOL. 1183, PG. 00769

246077
PCA-796
RECEIVED AND FILED
FOR RECORD
2:00 O'Clock P.M.
NOV 17 1993
Jeane Brunson, Co. Clerk
PARKER COUNTY, TEXAS



NOTE: ALL CORNER MONUMENTS ARE SET 1/2" IRON RODS WITH G.A.I. CAPS UNLESS OTHERWISE NOTED.

STATE OF TEXAS COUNTY OF FORT BEND
I, County Clerk, do hereby certify that this instrument was filed for record in the public records of Parker County as stipulated herein by me.
RECORDED NOV 17 1993
Jeane Brunson
County Clerk, Parker County, Texas
JOSEPH TRIMBLE SURVEY
ABSTRACT NO. 1289

FINAL PLAT

HOBSON INDUSTRIAL PARK - SECTION II

CITY OF WEATHERFORD
PARKER COUNTY, TEXAS

Graham Associates, Inc.
CONSULTING ENGINEERS & PLANNERS
616 SIX FLAGS DRIVE, SUITE 400
ARLINGTON, TEXAS 76011 (817) 640-8535

Date: JULY '93
File: 9737-1001
Drawn By: G.A.I. Sheet 1 of 2

JAMAK, INC.
VOL. 688, PG. 1

GEORGE K. ELKINS SURVEY
ABSTRACT NO. 424

SUE H. ROACH SURVEY
ABSTRACT NO. 2252