

14386

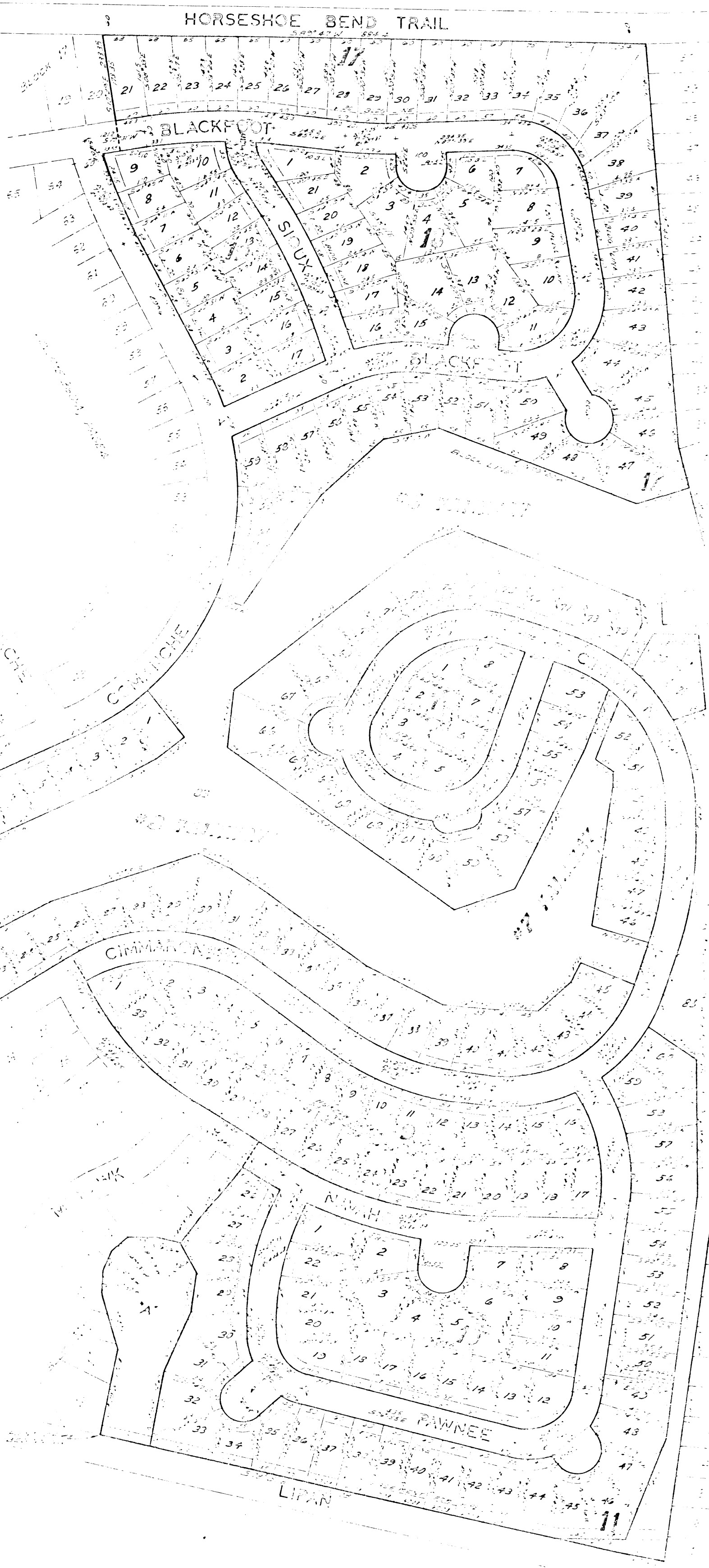
RECEIVED AND FILED
FOR RECORD
At 1:00 O'clock P.M.

JUN 16 1972

T. H. "Tommy" McDaniel, Co. Clerk
PARKER COUNTY, TEXAS
By *[Signature]* Deputy
2.00 p.d.



graphic scale in feet



Being a true and correct copy of the map...
1. THE UNDERSIGNED, COUNTY CLERK OF PARKER COUNTY, TEXAS, DO HEREBY CERTIFY THAT THE FOREGOING INSTRUMENT WAS FILED IN MY OFFICE ON THE 16th DAY OF June, A. D. 1972 AT 1:00 O'CLOCK P.M. IN THE presence of *[Signature]* RECORDS OF SAID COUNTY, TEXAS, 360 A. OR PAGES...
AT 1:00 O'CLOCK P.M. IN THE presence of *[Signature]* RECORDS OF SAID COUNTY, TEXAS, 360 A. OR PAGES...
AT 1:00 O'CLOCK P.M. IN THE presence of *[Signature]* RECORDS OF SAID COUNTY, TEXAS, 360 A. OR PAGES...
AT 1:00 O'CLOCK P.M. IN THE presence of *[Signature]* RECORDS OF SAID COUNTY, TEXAS, 360 A. OR PAGES...

MAP SHOWING
BLOCKS 7, 8, 9 AND 10 AND LOTS 26
THRU 60 AND TRACT A, BLOCK 11,
AND LOTS 21 THRU 62, BLOCK 17
AND BLOCKS 18 AND 19
HORSESHOE BEND
PHASE TWO, SECTION THREE
AN ADDITION IN PARKER COUNTY, TEXAS
OUT OF THE HEZEKIAH JONES SURVEY

J. JIM DUNAWAY
JUL 15 1972
COUNTY CLERK
PARKER COUNTY, TEXAS
6-7-72