

A255

STATE OF TEXAS
COUNTY OF PARKER
I hereby certify that this instrument was
filed on the date and time stamped here
on by me and was duly recorded on the
14 day of Feb A.D., 1977, in
Vol. 36-A page 72 of the Plat
records of Parker, Texas

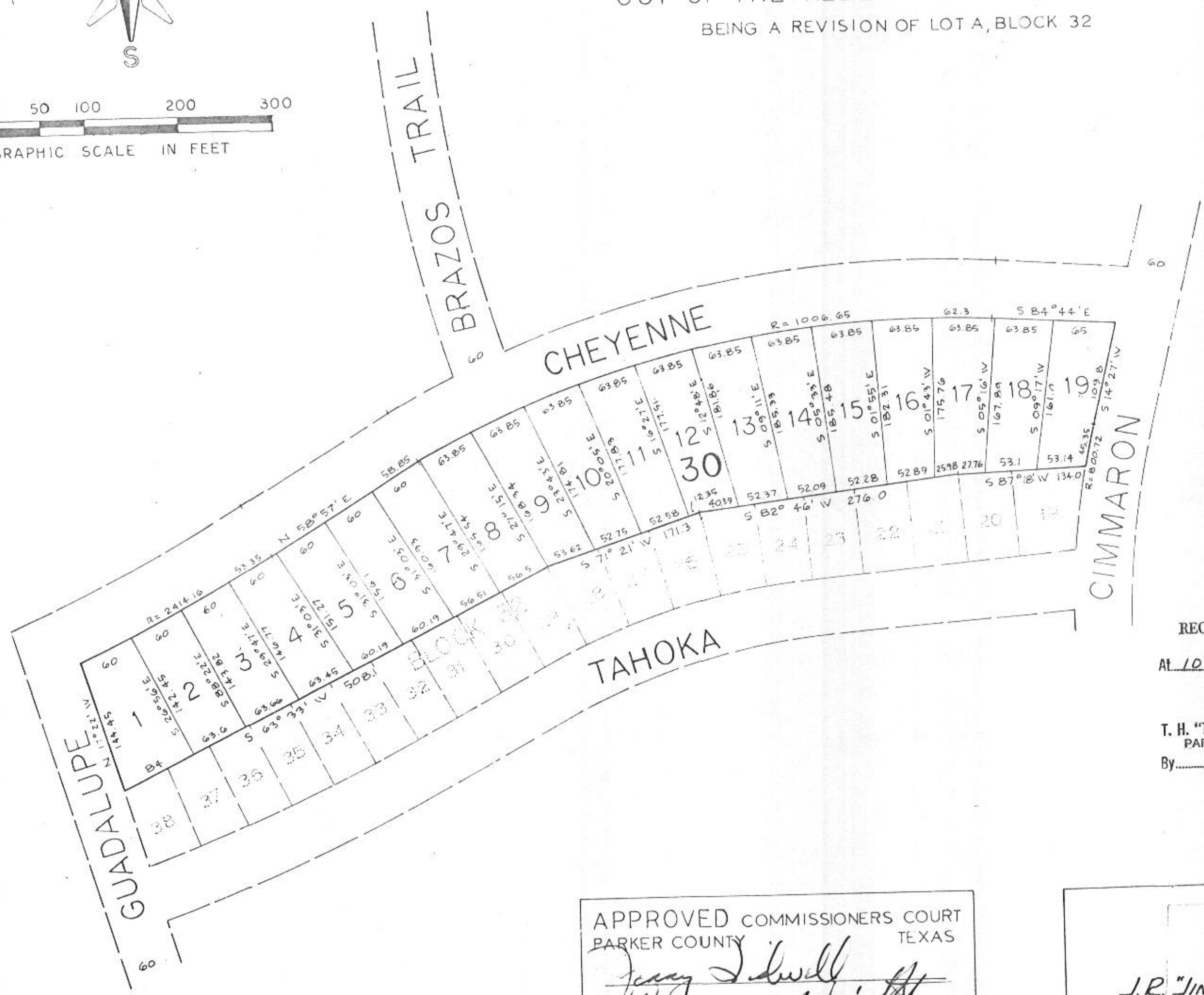
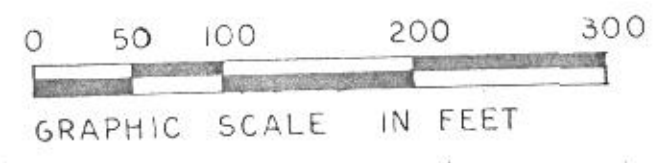
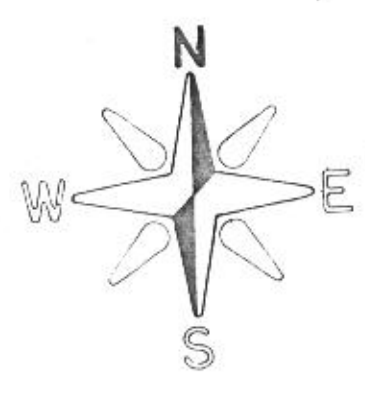


J. H. "Tommy" McDaniel

County Clerk, Parker
County, Texas

MAP SHOWING

LOTS 1 THRU 19, BLOCK 30
"HORSESHOE BEND"
PHASE TWO, SECTION FOUR
AN ADDITION IN PARKER COUNTY TEXAS
OUT OF THE HEZEKIAH JONES SURVEY
BEING A REVISION OF LOT A, BLOCK 32



#55563

RECEIVED AND FILED
FOR RECORD
AT 10:45 O'clock A.M.
FEB 14 1977

T. H. "Tommy" McDANIEL, Co. Clerk
PARKER COUNTY, TEXAS
By *J.M.* Deputy
5.0080

APPROVED COMMISSIONERS COURT
PARKER COUNTY TEXAS
Jerry Schull
W. Raymond Wright
DATE: 2-14-77

J.R. "JIM" DUNAWAY
REGISTERED PUBLIC SURVEYOR
5300 EDGECLIFF ROAD
FORT WORTH, TEXAS
I, J.R. Dunaway, CERTIFY
THIS PLAT IS TRUE AND CORRECT AS
SURVEYED ON THE GROUND AND THERE
ARE NO ENCROACHMENTS OR PROTECTIONS
EXCEPT AS SHOWN.
DATE: 1-24-77

A-255