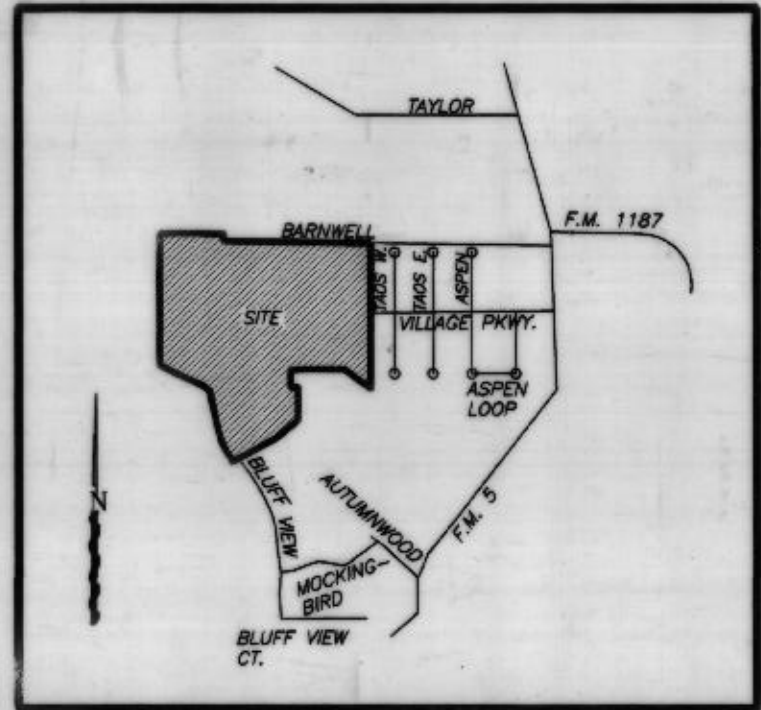


PARKER COUNTY TEXAS
UTILITY DISTRICT
V. 1016, P. 691

CITY OF ALEDO
V. 1565, P. 351

A.B. SMITH SURVEY
ABST. NO. 1223

POINT OF BEGINNING



VICINITY MAP
NTS

JOHN B. HIBBERT SURVEY
ABST. NO. 613

TANGENT TABLE

COURSE	BEARING	DISTANCE
(T-1)	S 51°28'38"E	44.31'
(T-2)	N 00°07'00"E	71.44'
(T-3)	S 41°32'00"E	22.36'
(T-4)	N 13°24'46"W	43.61'
(T-5)	N 11°45'27"W	41.65'
(T-6)	N 05°26'46"W	36.03'
(T-7)	N 53°36'16"W	63.65'
(T-8)	N 65°27'01"W	56.11'
(T-9)	N 65°36'25"W	67.27'
(T-10)	N 64°14'07"W	51.25'
(T-11)	N 65°27'01"W	68.91'
(T-12)	N 67°14'14"W	59.07'
(T-13)	N 55°34'53"W	28.66'
(T-14)	N 89°33'00"E	22.80'
(T-15)	N 89°33'00"E	11.93'
(T-16)	S 14°54'37"E	35.87'

OVERHEAD TRI-COUNTY ELECTRIC LINE
TO BE ABANDONED AND LINE RUN
UNDERGROUND



Surveyed June, 2000, 1/2" irons found along
perimeter of boundary unless otherwise noted, 1/2"
irons set upon completion of street and utility
construction

Brent A. Mizell
REGISTERED PROFESSIONAL LAND SURVEYOR
TEXAS REGISTRATION NO. 1067
January 15, 2001

20' WIDE SANITARY SEWER ESMT.
P.C. B. S. 099
(TO BE ABANDONED THIS FILING)

LARRY B. WHITE
V. 1193, P. 1306

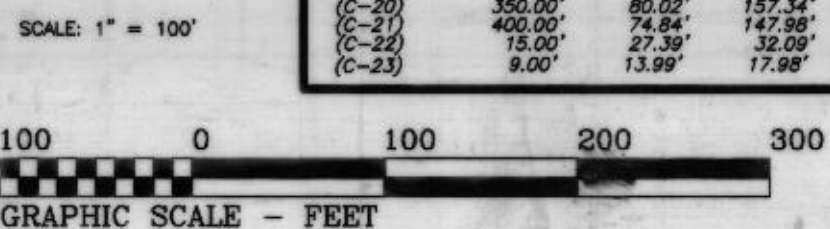
ROBERT DAUGHERTY, ETUX
V. 424, P. 329

CURVE TABLE

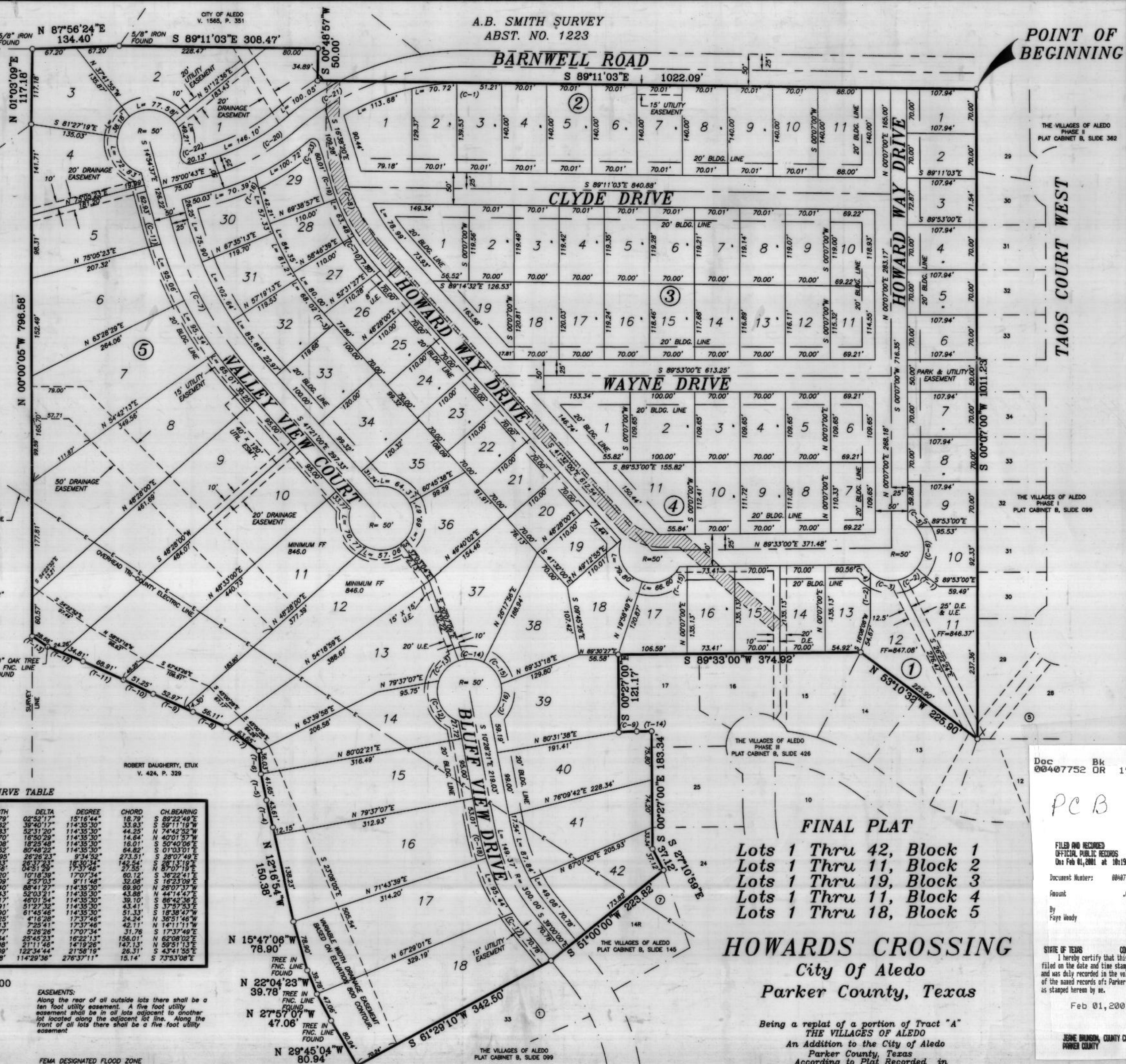
CURVE	RADIUS	TANGENT	LENGTH	DELTA	DEGREE	CHORD	CH. BEARING
(C-1)	375.00'	9.40'	18.79'	02°52'17"	15°16'44"	18.79'	S 89°22'49"E
(C-2)	50.00'	16.04'	34.62'	39°40'17"	114°35'30"	33.93'	S 91°11'19"W
(C-3)	50.00'	24.67'	45.83'	52°31'20"	114°35'30"	44.25'	N 74°42'52"W
(C-4)	50.00'	7.40'	14.70'	16°50'29"	114°35'30"	14.64'	N 40°01'57"W
(C-5)	50.00'	6.11'	16.08'	18°25'48"	114°35'30"	16.01'	S 67°40'06"E
(C-6)	50.00'	42.56'	70.52'	80°48'22"	114°35'30"	64.42'	01°03'01"E
(C-7)	598.00'	140.48'	275.95'	26°26'23"	9°34'52"	273.51'	S 28°07'49"E
(C-8)	598.00'	73.24'	143.83'	26°37'23"	16°30'34"	142.54'	S 28°13'19"W
(C-9)	325.00'	13.78'	27.56'	04°51'29"	17°37'46"	27.55'	N 87°01'19"E
(C-10)	334.55'	30.18'	60.20'	10°18'39"	17°07'34"	60.12'	S 36°22'41"E
(C-11)	623.00'	16.05'	32.09'	2°57'03"	9°11'48"	32.08'	S 16°23'09"E
(C-12)	50.00'	48.87'	77.40'	88°41'27"	114°35'30"	69.90'	N 26°07'37"W
(C-13)	50.00'	24.42'	45.43'	52°31'20"	114°35'30"	43.88'	N 44°14'47"E
(C-14)	50.00'	21.24'	40.17'	46°01'54"	114°35'30"	39.10'	S 86°42'36"E
(C-15)	50.00'	24.10'	44.91'	51°27'32"	114°35'30"	43.41'	S 37°57'53"E
(C-16)	50.00'	29.90'	53.90'	61°46'46"	114°35'30"	51.33'	S 18°38'47"W
(C-17)	325.00'	12.13'	24.25'	4°16'29"	17°37'46"	24.24'	N 38°51'46"W
(C-18)	325.00'	21.10'	42.13'	7°25'41"	17°37'46"	42.11'	N 14°11'11"W
(C-19)	334.55'	15.90'	31.77'	5°26'26"	17°07'34"	31.76'	S 17°37'49"E
(C-20)	350.00'	80.02'	157.34'	27°45'23"	16°22'13"	156.01'	N 62°08'02"E
(C-21)	400.00'	74.94'	147.98'	21°11'46"	14°19'26"	147.13'	N 59°11'13"E
(C-22)	15.00'	27.39'	32.09'	12°34'44"	21°58'19"	26.31'	S 43°41'55"E
(C-23)	9.00'	13.99'	17.98'	11°42'36"	276°37'11"	15.14'	S 73°53'08"E

EASEMENTS:
Along the rear of all outside lots there shall be a
ten foot utility easement. A five foot utility
easement shall be in all lots adjacent to another
lot located along the adjacent lot line. Along the
front of all lots there shall be a five foot utility
easement.

FEMA DESIGNATED FLOOD ZONE
The south western edge of the property
is in the 100 year flood zone of the river.



MIZELL LAND SURVEYING, INC.
513 NORTH 1187, SUITE 5
ALEDO, TEXAS 76008
(817) 441-6199



THE VILLAGES OF ALEDO
PHASE II
PLAT CABINET B, SLIDE 382

TAOS COURT WEST

THE VILLAGES OF ALEDO
PHASE I
PLAT CABINET B, SLIDE 099

Doc 00407752 Bk OR Vol 1909 Pg 830

PC B 567

FILED AND RECORDED
OFFICIAL PUBLIC RECORDS
On: Feb 01, 2001 at 10:19A
Document Number: 00407752
Foliant: .06
By: Faye Moody

STATE OF TEXAS COUNTY OF PARKER
I hereby certify that this instrument was
filed on the date and time stamped herein by me
and was duly recorded in the volume and page
of the named records of Parker County
as stamped herein by me.

Feb 01, 2001

JESSE BRUNSON, COUNTY CLERK
PARKER COUNTY

FINAL PLAT
Lots 1 Thru 42, Block 1
Lots 1 Thru 11, Block 2
Lots 1 Thru 19, Block 3
Lots 1 Thru 11, Block 4
Lots 1 Thru 18, Block 5
HOWARDS CROSSING
City of Aledo
Parker County, Texas

Being a replat of a portion of Tract "A"
THE VILLAGES OF ALEDO
An Addition to the City of Aledo
Parker County, Texas
According to Plat Recorded in
Plat Cabinet B, Slide 099
Plat Records, Parker County, Texas