

SURVEY PLAT OF  
J.B. DAVIS LAND CO.

23857

CR

BEING A SUBDIVISION OF

- T & P R.R. CO. SEC. 313 ABST. 1527
- T & P R.R. CO. SEC. 311 ABST. 1526
- T & P R.R. CO. SEC. 315 ABST. 1528
- T & P R.R. CO. SEC. 308 ABST. 938
- W.S. FONDRED SUR. ABST. 2305
- W.D. GUYTON SUR. ABST. 520
- JNO. BROWN SUR. ABST. 93

STATE OF TEXAS  
COUNTY OF PARKER  
I hereby certify that this instrument was  
filed on the date and time stamped here-  
on by me and was duly recorded on the  
13 day of Aug, A.D., 1973 in  
Vol. 3408 page 242 of the Plat  
records of Parker, Texas



J. H. "Tommy" McDaniel  
County Clerk, Parker  
County, Texas

RECEIVED AND FILED  
FOR RECORD  
At 7 O'clock P.M.  
AUG 13 1973  
T. H. "Tommy" McDaniel, Co. Clerk  
PARKER COUNTY, TEXAS  
By *ck* Deputy  
2<sup>nd</sup> fl.

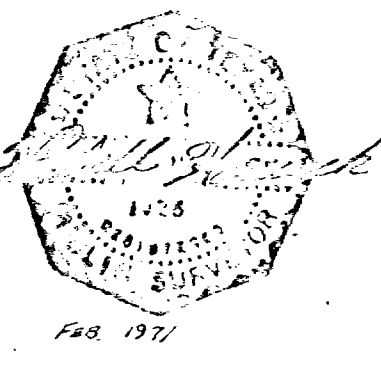
PARKER COUNTY, TEXAS

APPROVED BY PARKER COUNTY  
COMMISSIONERS COURT 8-13-73

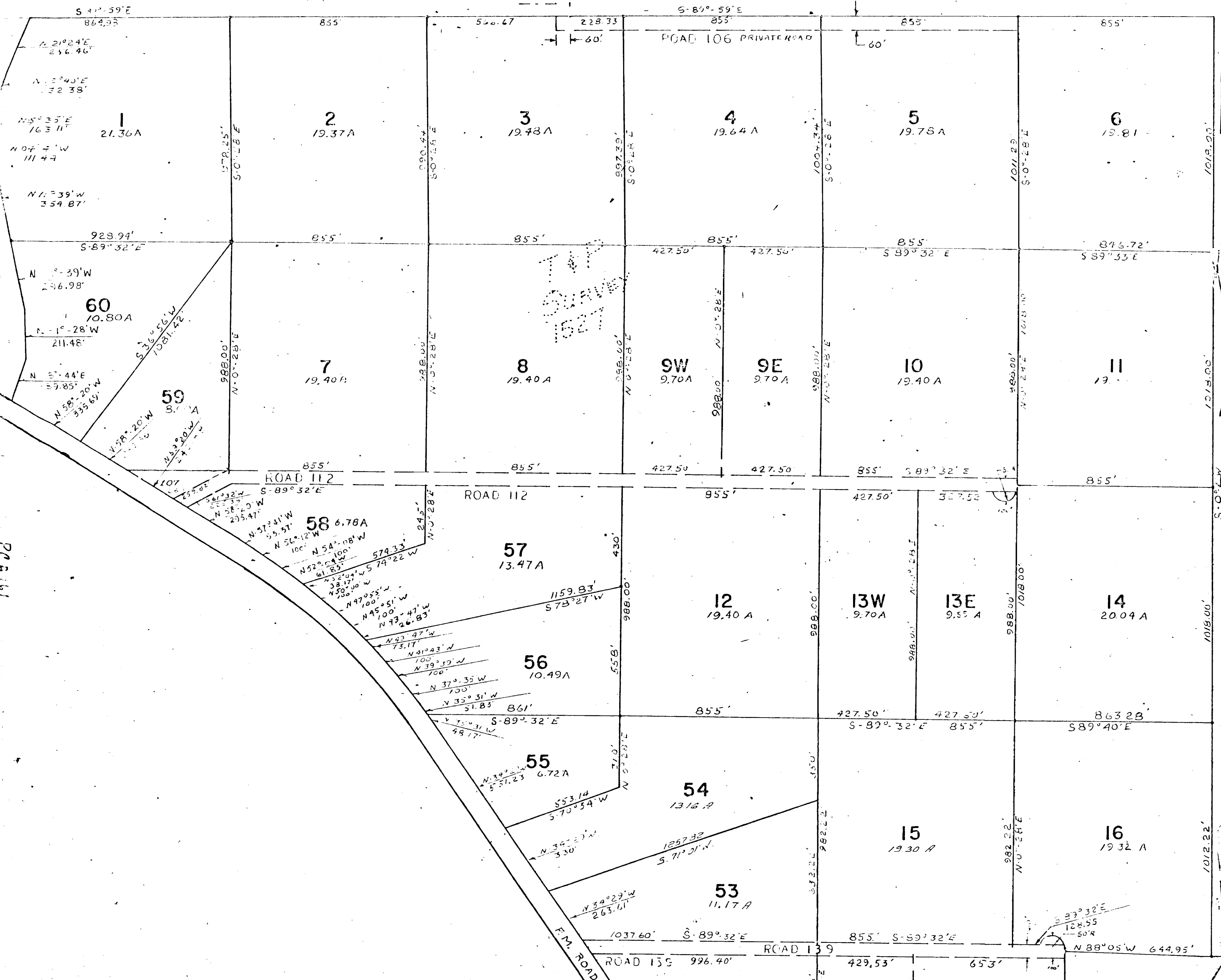
I, WENDELL HANCOCK, CERTIFY THAT THE  
ABOVE PLAT REPRESENTS A SURVEY  
MADE ON THE GROUND

WENDELL HANCOCK

registered public surveyor no. 1326  
834-6213  
5144-D EAST BELKNAP STREET  
FORT WORTH, TEXAS 76117



SCALE - 1" = 300'



PCRA 161