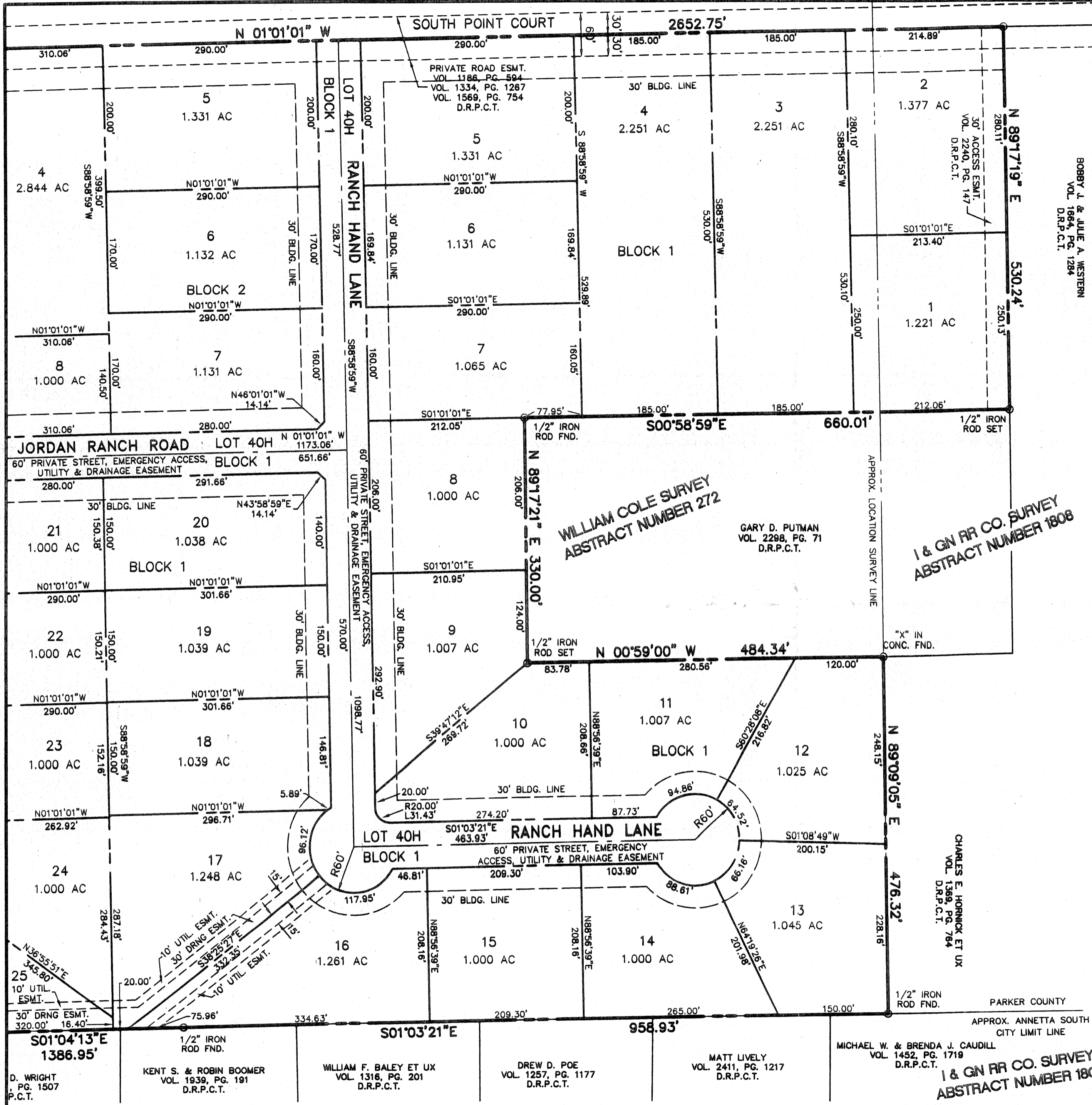
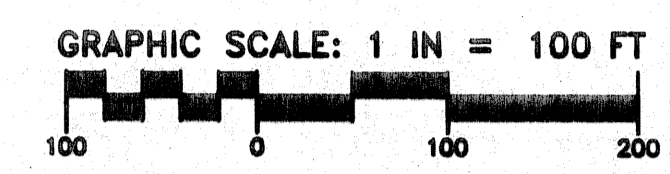
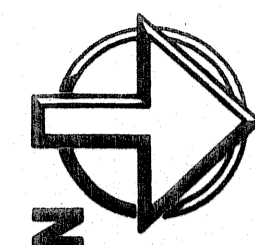


C518



BOBBY J. & JULIE A. WESTERN
VOL. 1864, PG. 1284
D.R.P.C.T.

GARY D. PUTMAN
VOL. 2298, PG. 71
D.R.P.C.T.

I & GN RR CO. SURVEY
ABSTRACT NUMBER 1808



I DO HEREBY CERTIFY THAT THIS
PLAT IS TRUE AND CORRECT AS
SURVEYED ON THE GROUND.

BY: *Patrick Carter*

DATE: DECEMBER 7, 2006

ACCT. NO.: 14027
SCH. DIST.: AL
CITY: CO
MAP NO.: L-19

FINAL PLAT

LOTS 1-40H, BLOCK 1 & LOTS 1-11, BLOCK 2 JORDAN RANCH

BEING 73.480 ACRES OF LAND SITUATED IN THE
WILLIAM COLE SURVEY, ABSTRACT NUMBER 272
& THE I&GN RR CO. SURVEY, ABSTRACT NUMBER 1808
ANNETTA SOUTH, PARKER COUNTY, TEXAS
& PARKER COUNTY, TEXAS

PREPARED NOVEMBER 9, 2006

PREPARED BY

SD Engineering, Inc.

Site Development Engineering

PO Box 1357 Aledo, TX 76008-1357
(817) 441-6400 Fax (817) 441-6085
www.sd-engineering.com

SHEET 3 OF 4

DENOTES MONUMENTS USED FOR BASIS OF BEARING.
BASIS OF BEARING IS PER THE DEED TO WILLIAM JORDAN
VOLUME 1176, PAGE 309, VOLUME 1186, PAGE 573, &
VOLUME 1439, PAGE 939, DEED RECORDS, PARKER CO., TEXAS

DF0107-09-11/11/08/0029290/6910