

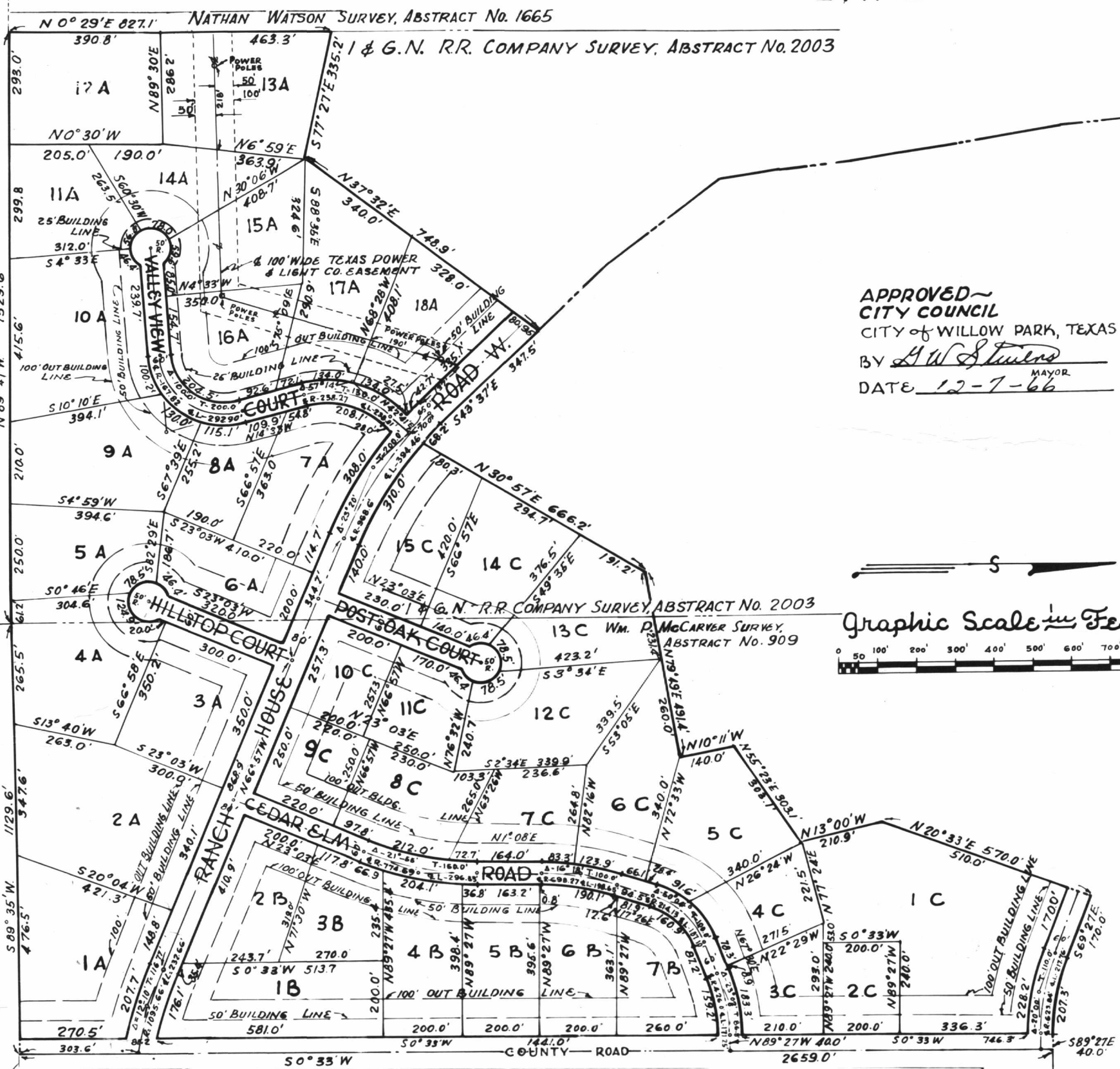
PCA-119

LAKE WEATHERFORD

J. B. WYNN SURVEY ABSTRACT No. 1637

ANN MCCARVER SURVEY, ABSTRACT No. 910

WM. P. MCCARVER SURVEY, ABSTRACT No. 909



APPROVED~
 CITY COUNCIL
 CITY of WILLOW PARK, TEXAS
 BY H. W. Stowers MAYOR
 DATE 12-7-66



TRACTS 1A thru 18A TRACTS 1B thru 7B;
 TRACTS 1C thru 15C:

Laguna Vista Estates

WILLOW PARK, PARKER COUNTY, TEXAS

A PART of THE I. & G. N. R. R. COMPANY SURVEY, ABSTRACT No. 2003
 THE WM. P. MCCARVER SURVEY, ABSTRACT No. 909
 PARKER COUNTY, TEXAS
 BROWN and DAVIES, ENGINEERS
 JULY 1966
 PROGRESSIVE DEVELOPMENT, INC., DEVELOPERS



R. B. Brown