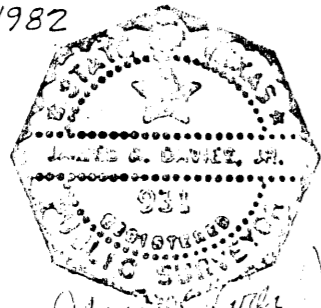


Approved ~
 CITY COUNCIL
 CITY of WILLOW PARK, TEXAS
 BY ~ St. S.K.
 MAYOR
 DATE ~ Nov 22, 1982

TRACTS 19A-3R1 and 19A-3R2
 A REVISION of TRACT 19A-3
LAGUNA VISTA ESTATES
 WILLOW PARK, PARKER COUNTY, TEXAS
 A PART of THE WM. P. McCARVER SURVEY, ABST. No. 909

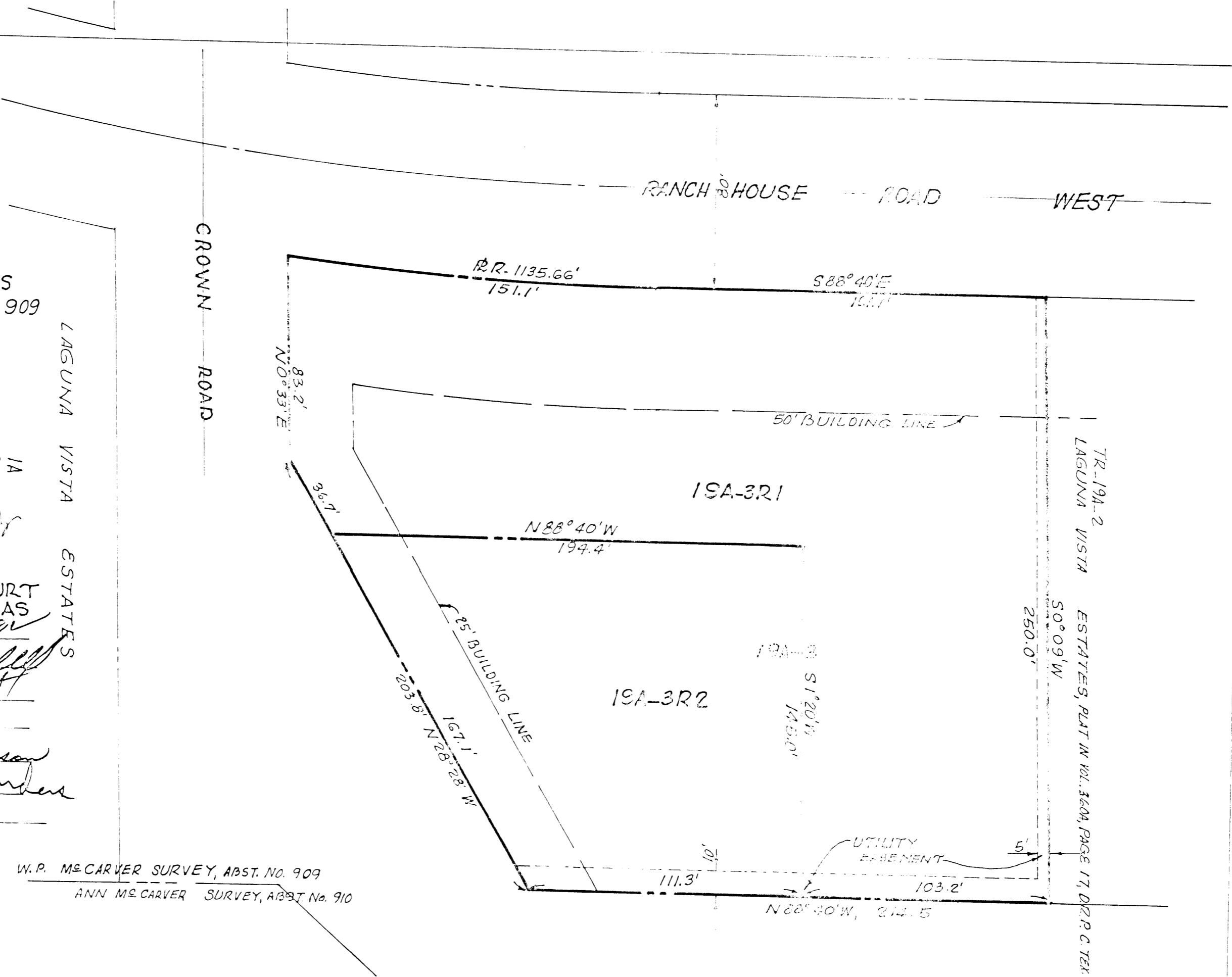
BROWN and DAVIES, ENGINEERS

APRIL 1982

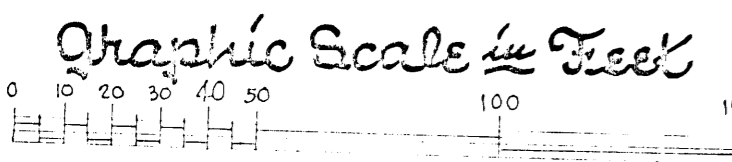


APPROVED ~
 COMMISSIONERS COURT
 PARKER COUNTY, TEXAS
 Date July 24, 82

By Guadalupe
Wayne Wright
Harold Anderson
Charles Sanders



W.P. McCARVER SURVEY, ABST. No. 909
 ANN McCARVER SURVEY, ABST. No. 910



52395

RECEIVED AND FILED
 FOR RECORD
 At 10:25 O'Clock A.M.

JUL 26 1982

CARRIE REED, Co. Clerk
 PARKER COUNTY, TEXAS
 By [Signature] Deputy

Book 362A page 5

STATE OF TEXAS COUNTY OF PARKER
 I hereby certify that this instrument was filed
 on the date and time stamped hereon by me and
 was duly recorded in the volume and page of the
 named records of Parker County as stamped here-
 on by me.

RECORDED JUL 26 1982



Carrie Reed
 County Clerk, Parker County, Tex.