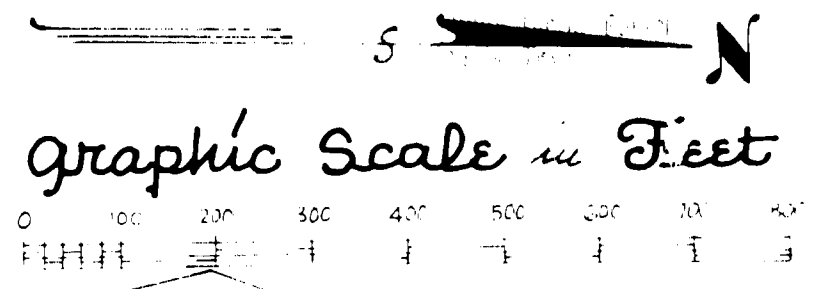
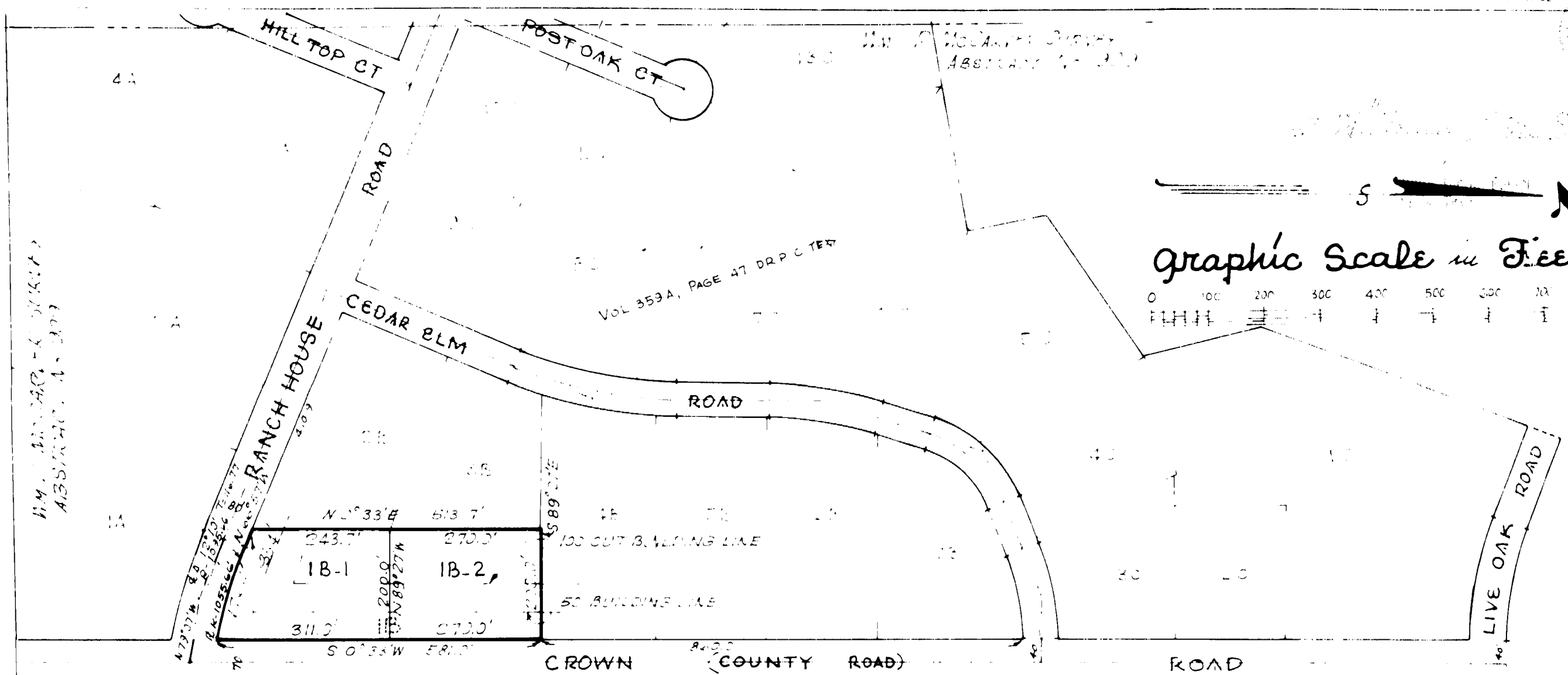


15
 Jan. 10 1975
 W.P. Parker
 County Clerk
 Parker County, Texas



ANN McCARVER SURVEY ABSTRACT NO. 910

W.M. McCarver Survey Abstract No. 910

LAGUNA VISTA EST. 19A
 Vol 359A, PAGES 5
 DRPC TEX

Approved -
 CITY COUNCIL
 CITY of WILLOW PARK, TEXAS
 BY _____
 DATE _____ MAYOR

TRACTS 1B-1 and 1B-2
 A REVISION of TRACT 1B

Laguna Vista Estates

In
WILLOW PARK · PARKER COUNTY · TEXAS
 A PART of W.M.P. McCARVER SURVEY · ABSTRACT NO. 910

R. J. Brown

BROWN and DAVIES Engineers FORT WORTH, TEX.
 JAN. - 1975

35932

FILED AND RECORDED
 O'Clock
 JAN 15 1975

McDANIEL, Co. Clerk
 PARKER COUNTY, TEXAS
 Deputy