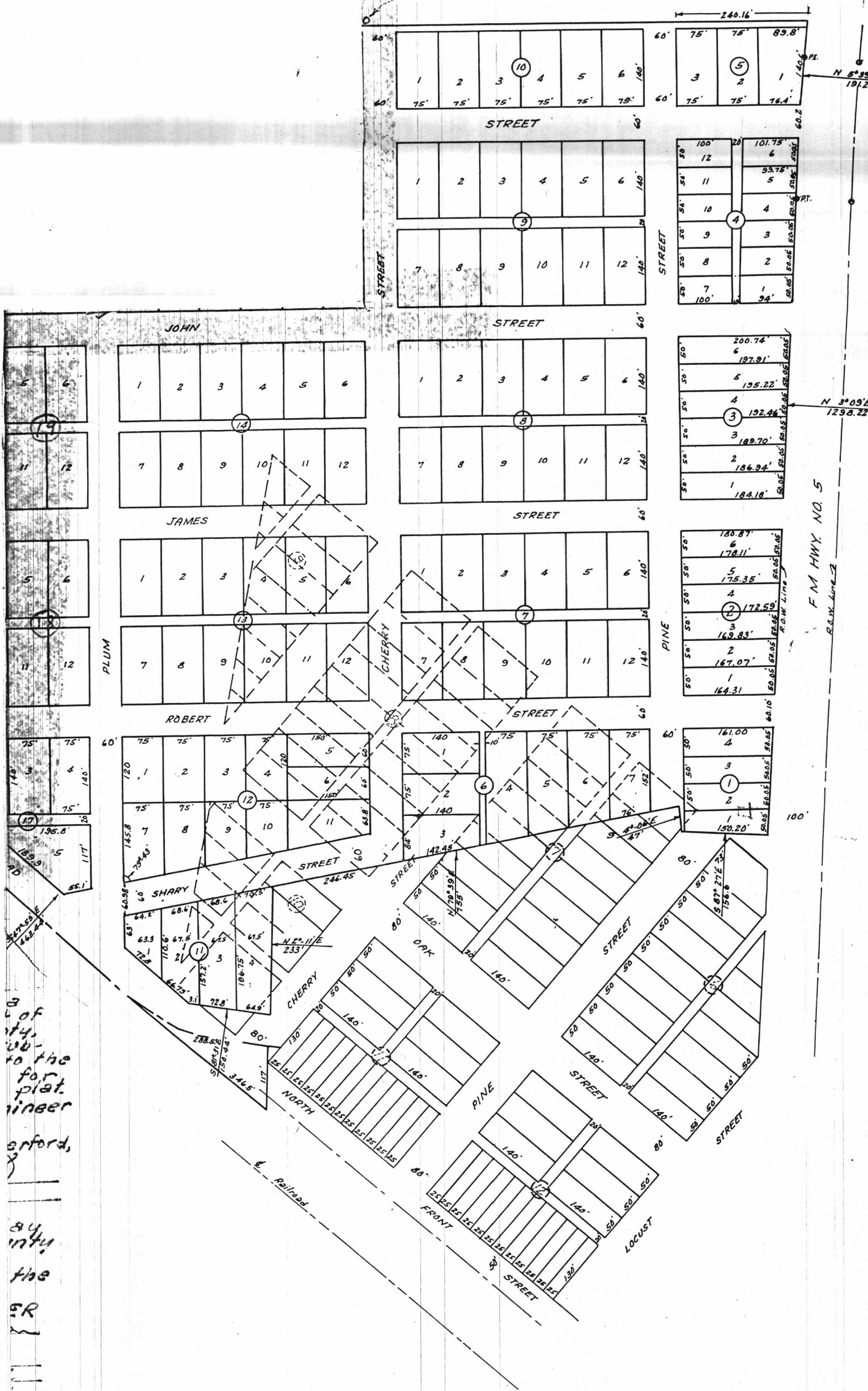


3019.28'
to N.W. Corner
of R.C. Eddleman
Survey.

641



Pl. 951924
Δ 2°36'14"
D 1"00"
T 130'
L 260'

N 3°09'E
1298.22'

F.M. HWY. NO. 5
R.M. June 2

of
to the
plat.
ineer
erford,
by
inty
the
SR
ers
and
Guy
person
and
-1955.

LASATER ADDITION
to Aledo, Parker County, Texas

Scale: 1" = 100'

L. C. McCanlies
L. C. McCanlies - Engineer