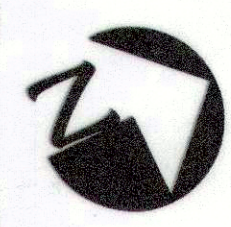
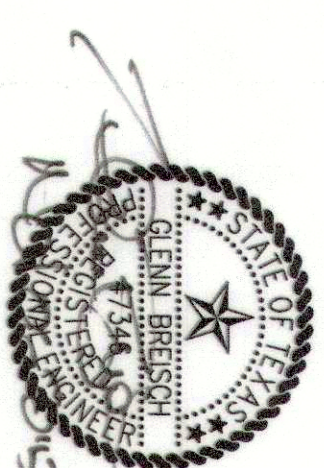
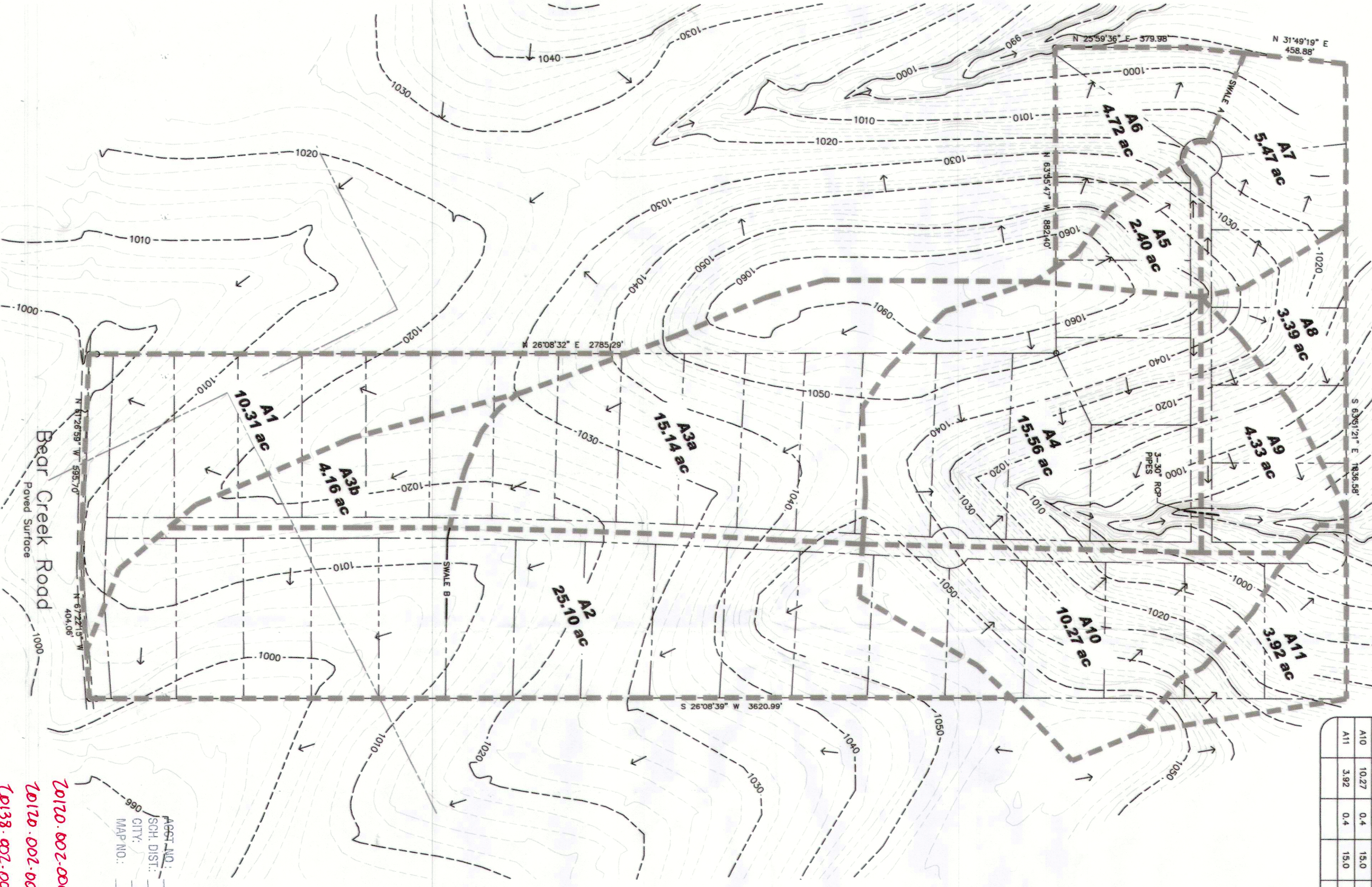


DRAINAGE AREA TABLE - 08/14/2015

D.A. NO.	AREA (AC.)	C	Tc (min.)	(10)	(100)	Q(10) (cfs)	Q(100) (cfs)	COMMENTS
A1	10.31	0.4	15.0	6.48	9.6	26.72	39.59	SHEET FLOW TO SOUTHWEST
A2	23.10	0.4	15.0	6.48	9.6	65.06	96.38	SHEET FLOW TO SOUTHEAST
A3a	15.14	0.4	15.0	6.48	9.6	39.24	58.14	DITCH FLOW TO SOUTHWEST
A3b	4.16	0.4	15.0	6.48	9.6	10.78	15.97	DITCH FLOW TO NORTHEAST
A4	15.56	0.4	15.0	6.48	9.6	40.33	59.75	DITCH FLOW TO NORTHEAST
A5	2.40	0.4	15.0	6.48	9.6	6.22	9.22	3-30" pipes at 050 to carry A3 & A4 DITCH FLOW TO SWALE A
A6	4.72	0.4	15.0	6.48	9.6	12.23	18.12	SHEET FLOW TO NORTHWEST
A7	5.47	0.4	15.0	6.48	9.6	14.18	21.00	SHEET FLOW TO NORTH-NORTHWEST
A8	3.39	0.4	15.0	6.48	9.6	8.79	13.02	SHEET FLOW TO NORTH
A9	4.33	0.4	15.0	6.48	9.6	11.22	16.63	DITCH FLOW TO NORTHEAST
A10	10.27	0.4	15.0	6.48	9.6	26.82	39.44	DITCH FLOW TO NORTHEAST
A11	3.92	0.4	15.0	6.48	9.6	10.16	15.05	SHEET FLOW TO NORTHEAST



GRAPHIC SCALE IN FEET
0 200 400 600

AMENDED PLAT

LOTS 1-12, BLOCK A
LOTS 1-13, BLOCK B

MARAVILLA VISTAS

AN ADDITION TO PARKER COUNTY, TEXAS
BEING 100.000 ACRES TRACT

OF LAND OUT OF THE

1. & G.N. R.R. CO. SURVEY, ABSTRACT NO. 1783,
THE J. BRADLEY SURVEY, ABSTRACT NO. 120,
AND THE B.B. & C. R.R. CO. SURVEY,
ABSTRACT NO. 138, PARKER COUNTY, TEXAS

25 LOTS (PHASE 1)

MARAVILLA DRIVE 2429 FEET (PHASE 1)

AGENT NO.: 14853
SCH. DIST.: 12L
CITY: PL
MAP NO.: K-19

OWNER/DEVELOPER
DOYLE HANLEY PROPERTIES
PARTNERSHIP, L.P.
Doyle Hanley
101 Kimbro Court
Aledo, TX 76008

WASTELINE ENGINEERING, INC.
WASTELINE-ENG.COM
P.O. BOX 421
208 SOUTH FRONT STREET
ALEDO, TX 76008
(817)441-1300
Fax: (817)441-1033
Texas Registered Engineer's Firm #1669

70120-002-000-00
70120-002-001-00
70138-002-002-00
70183-001-004-00

N-091