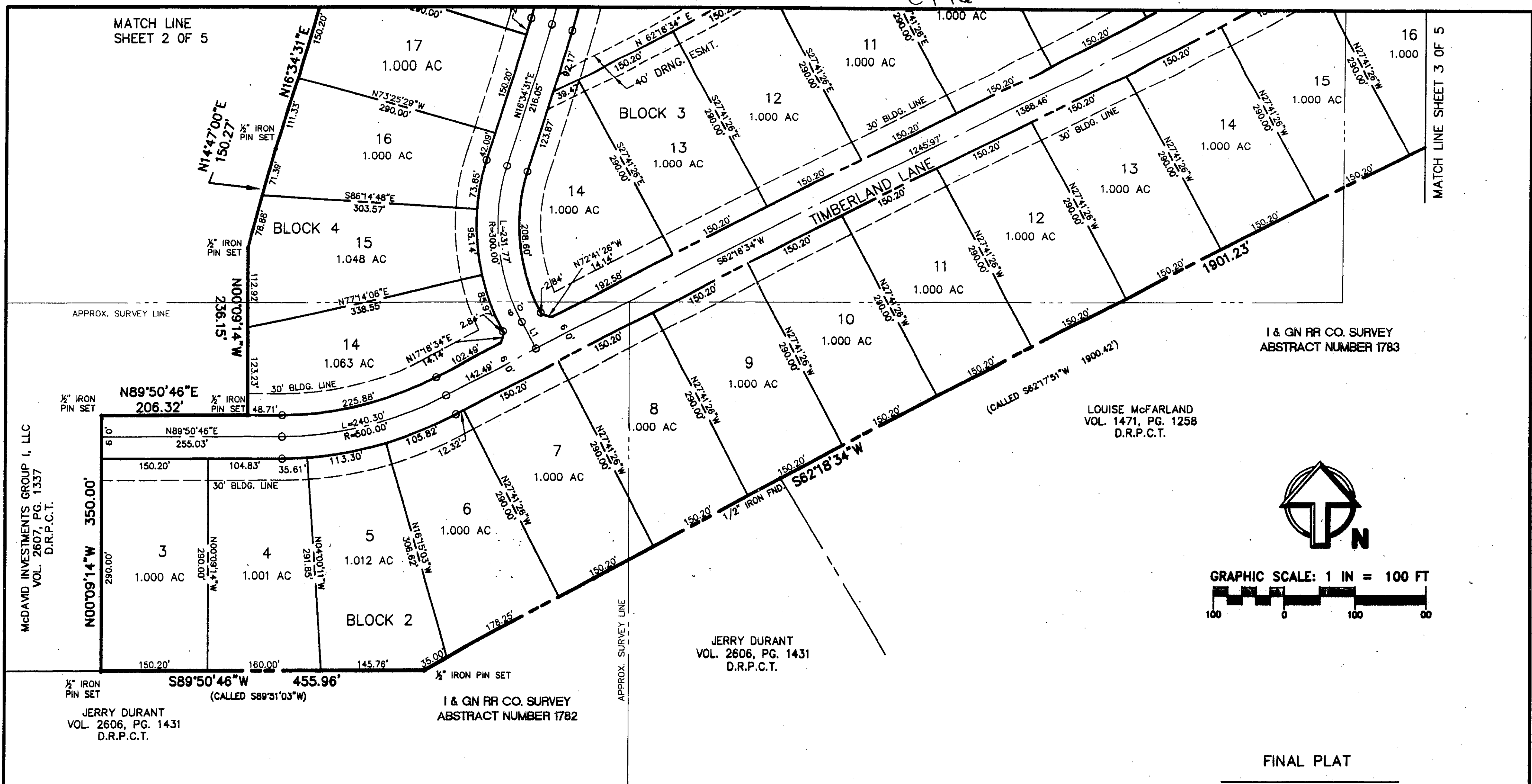


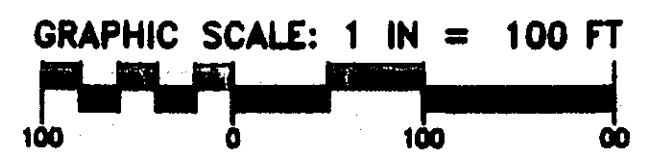
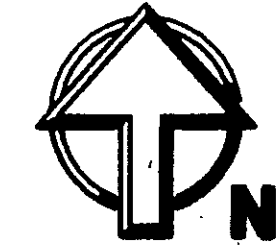
C746



I & GN RR CO. SURVEY
ABSTRACT NUMBER 1783

LOUISE McFARLAND
VOL. 1471, PG. 1258
D.R.P.C.T.

JERRY DURANT
VOL. 2606, PG. 1431
D.R.P.C.T.



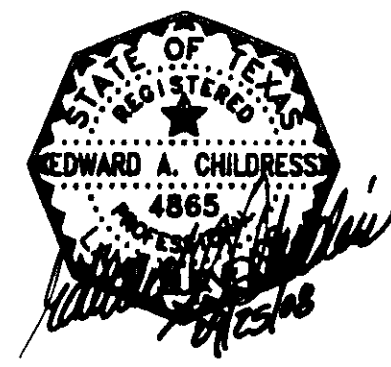
FINAL PLAT

LOTS 3-21, BLOCK 2
LOTS 1-16, BLOCK 3
LOTS 14-30, BLOCK 4
McDAVID SPRINGS

BEING 63.057 ACRES OF LAND SITUATED IN THE
 I & GN RR COMPANY SURVEY, ABSTRACT NUMBER 1782,
 I & GN RR COMPANY SURVEY, ABSTRACT NUMBER 1783,
 & THE AJ OTTO SURVEY, ABSTRACT NUMBER 2340
 PARKER COUNTY, TEXAS

ACCT. NO: 14983
 SCH. DIST: AL
 CITY: CO
 MAP NO.: L-19

PREPARED AUGUST 15, 2008



SD Engineering, Inc.
 Site Development Engineering

PO Box 1357 Alamo, TX 78008-1357
 (817) 441-8400 Fax (817) 441-8085
 www.sd-engineering.com

SHEET 4 OF 5