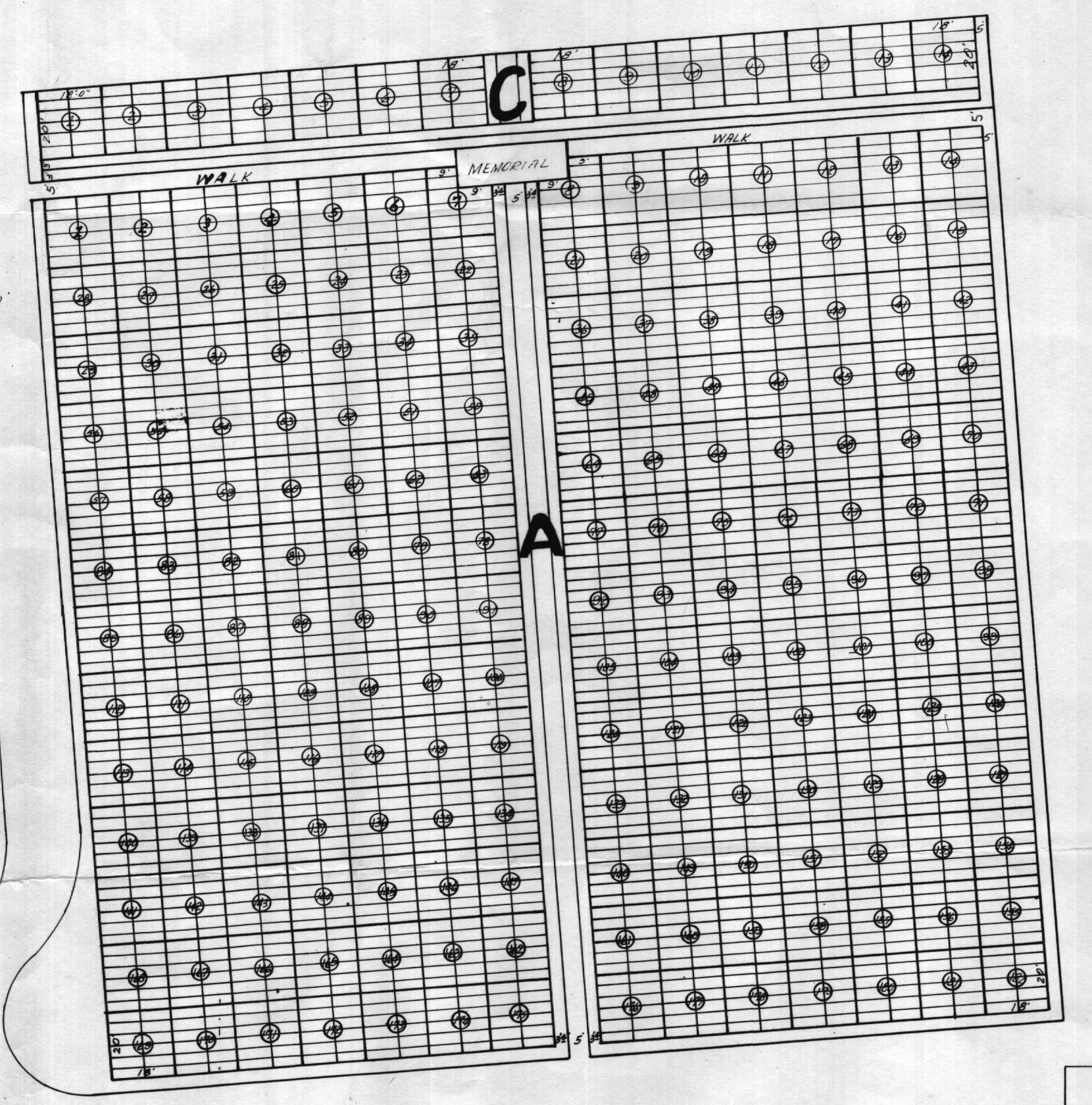
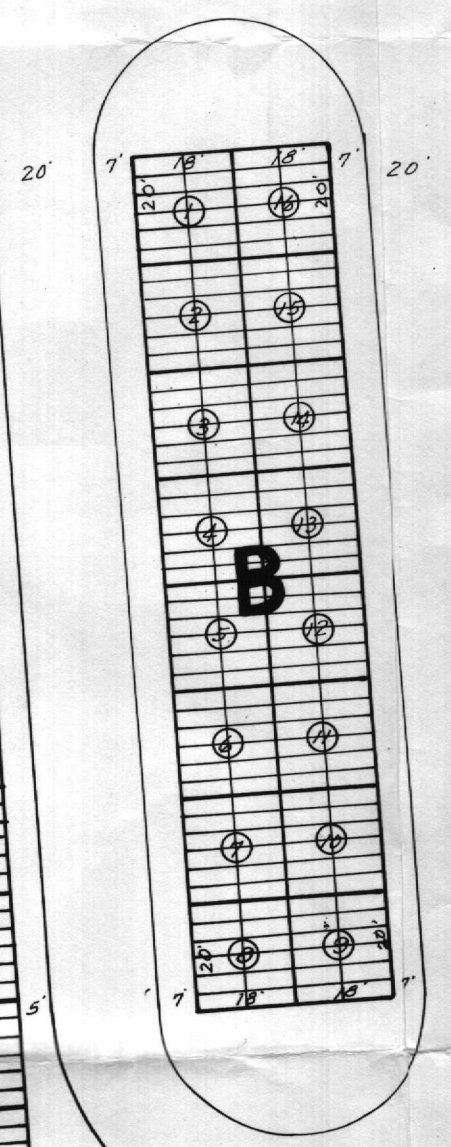
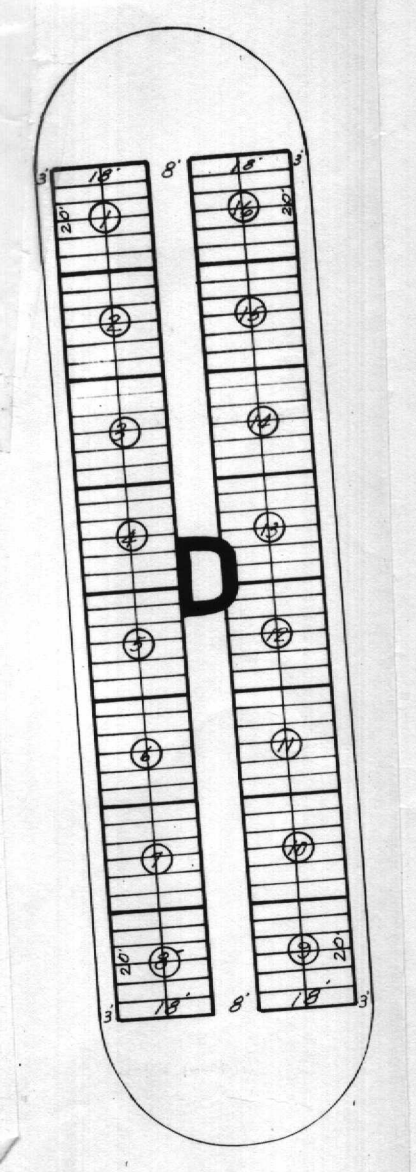
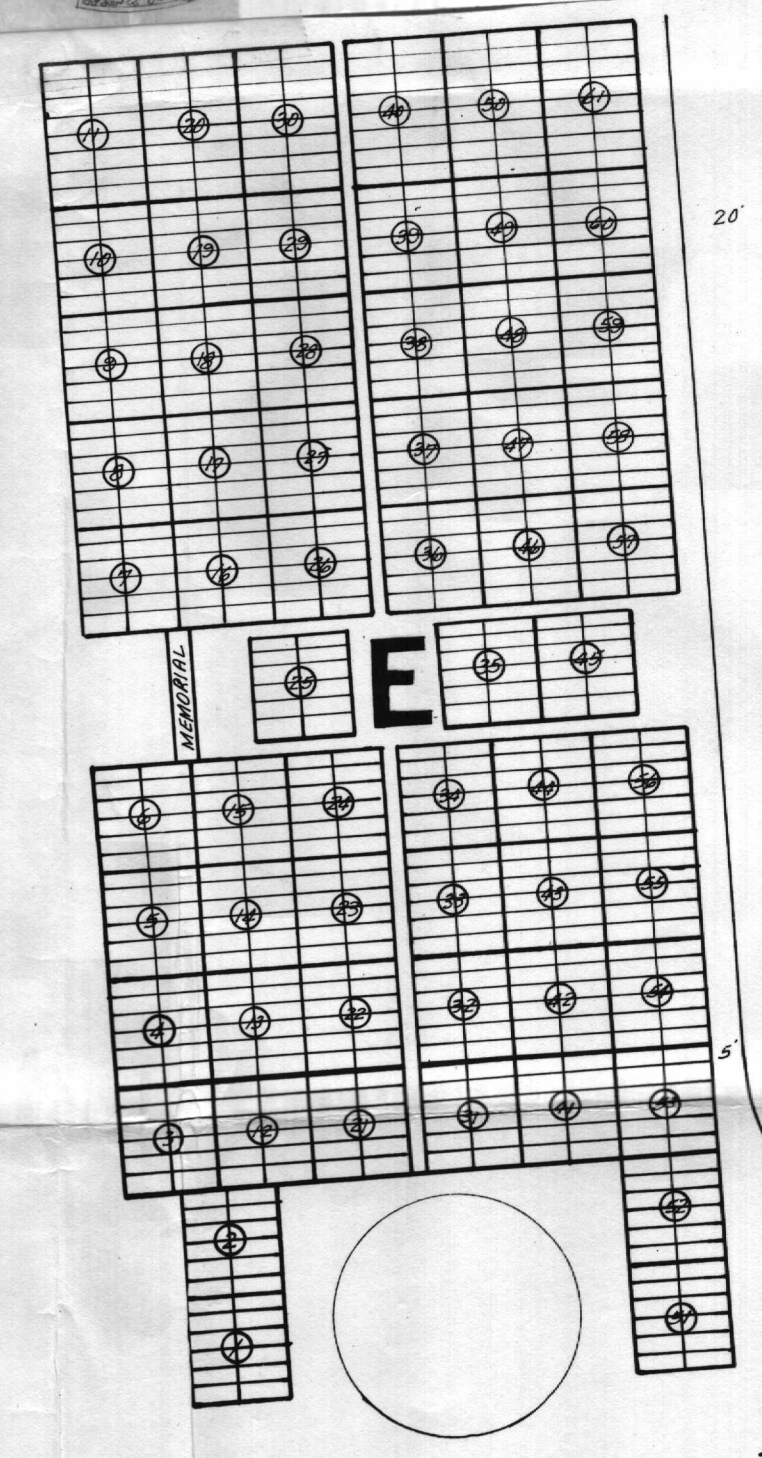
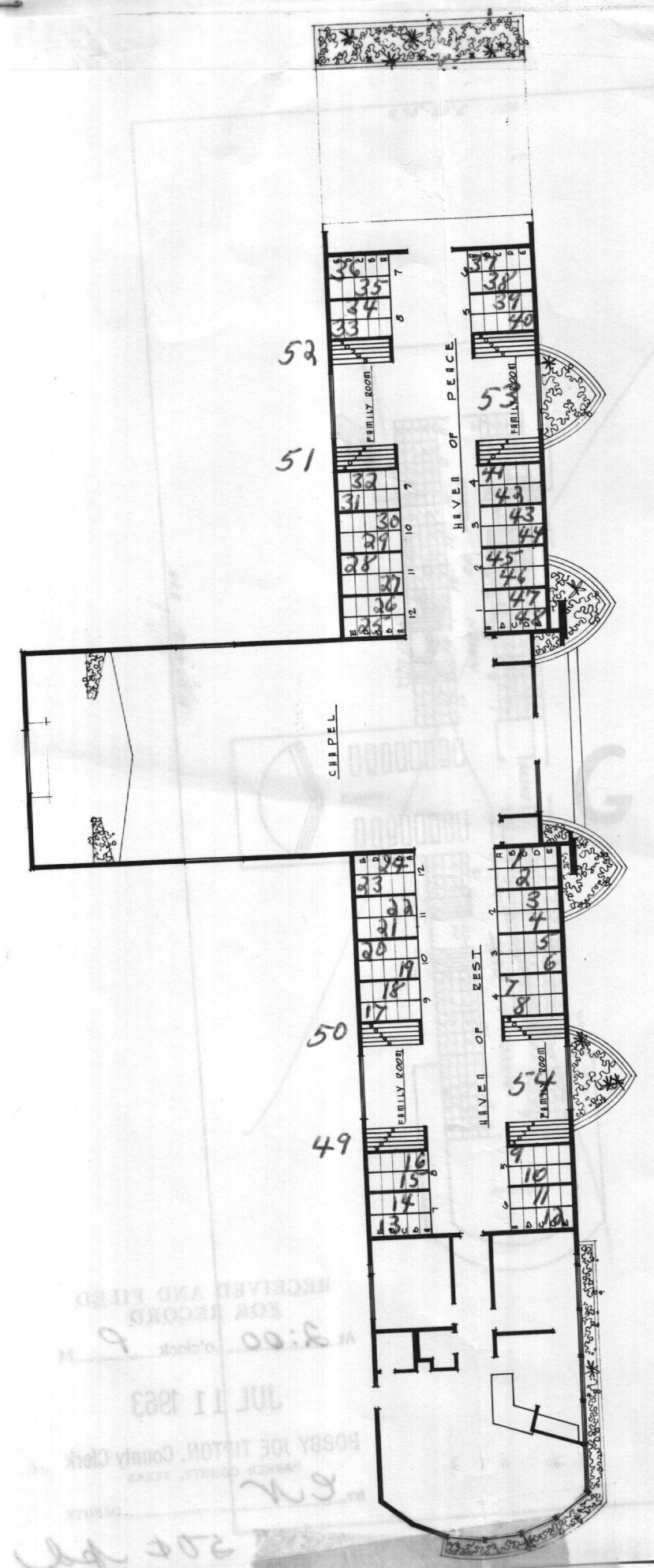


1	12
2	11
3	10
4	9
5	8
6	7

TYPICAL

U. S. HIGHWAY NO. 180



MEMORY GARDENS  
of the  
VALLEY

- LEGEND:
- SECTION A - THE GARDEN OF PRAYER
  - SECTION B - THE GARDEN OF ETERNITY
  - SECTION C - THE GARDEN OF THE GOSPELS
  - SECTION D - THE GARDEN OF THE GOOD SHEPHERD
  - SECTION E - THE GARDEN OF THE LORD'S LAST SUPPER
  - SECTION F - THE GARDEN OF THE HOLY CROSS
  - SECTION G - MAUSOLEUM OF THE ASCENSIONS

*L.C. McCallie*  
L.C. MCCALLIE - ENGINEER  
SURVEYOR, PARKER COUNTY, TEX.