

Plat Cab. B Slide 678

TOMMIE HUGHES AND ASSOCIATES P.C.
Registered Professional Land Surveyors
1414 South Main Street, Weatherford, Texas 76086
(817)594-5374 or (817)596-0212
2/4/2002 NO. 18121BL

Doc 00440231 Bk OR Vol 1994 Pg 1967

FILED AND RECORDED
OFFICIAL PUBLIC RECORDS
On: Mar 08, 2002 at 03:52P

Document Number: 00440231

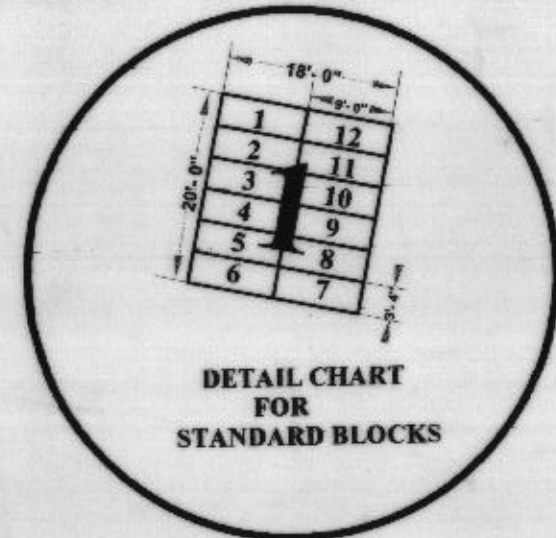
Amount: .00

By Leslie Coufal

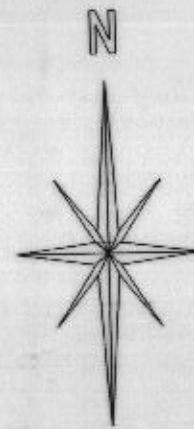
STATE OF TEXAS COUNTY OF PARKER
I hereby certify that this instrument was
filed on the date and time stamped hereon by me
and was duly recorded in the volume and page
of the named records of Parker County
as stamped hereon by me.

Mar 08, 2002

JERNE BRANSON, COUNTY CLERK
PARKER COUNTY



DETAIL CHART FOR STANDARD BLOCKS



SCALE 1"=20'

SEE PAGE ONE WHICH IS THE INDEX SHEET

SHEET 5

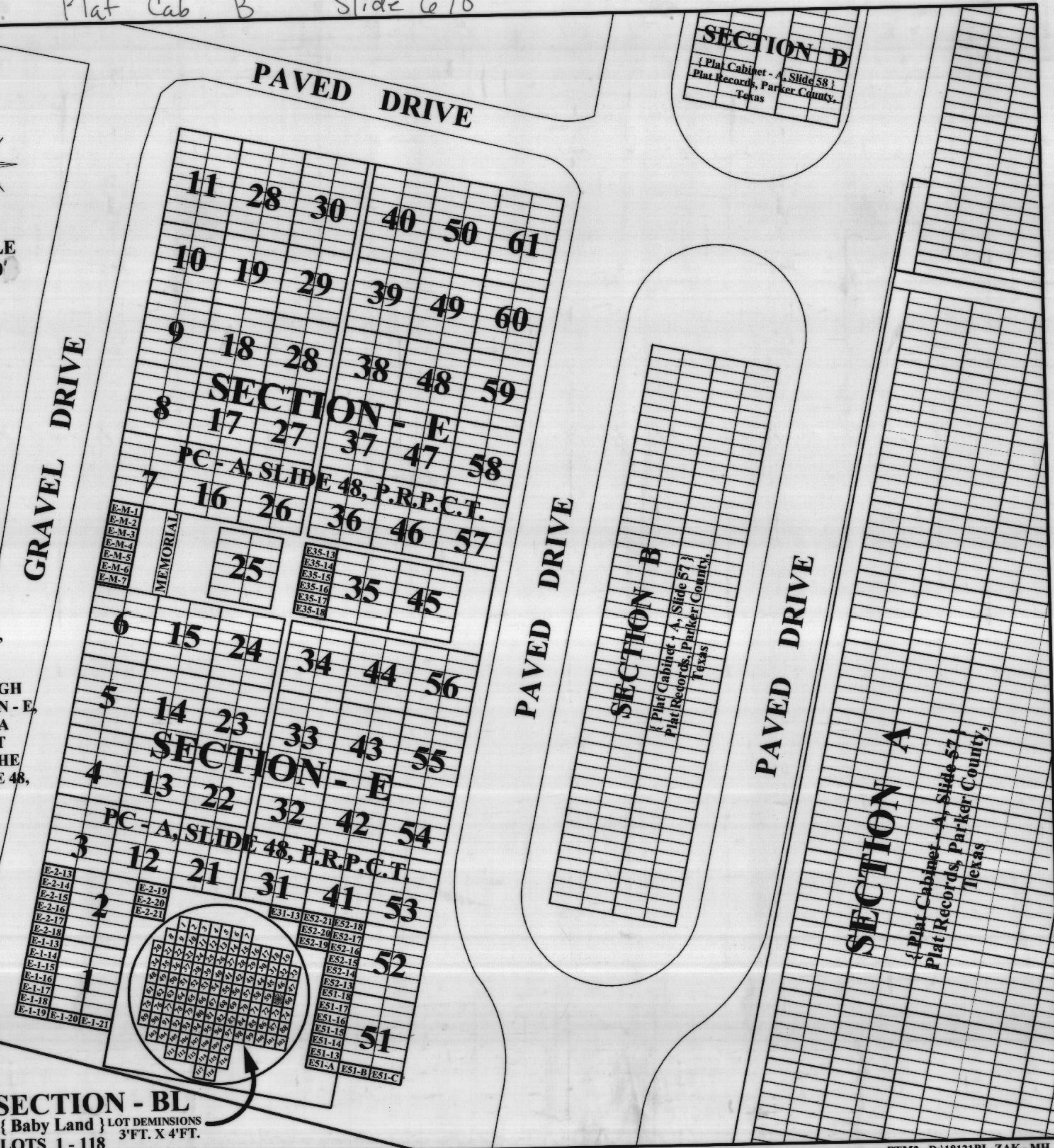
MEMORY GARDENS OF THE VALLEY
SECTION - E AND SECTION - BL

SECTION - BL, BEING LOTS 1 THROUGH 118 AND SECTION - E, BEING LOTS E-2-13 THROUGH E-2-21, E-1-13 THROUGH E-1-21, E31-13, E52-13 THROUGH E52-21, E51-13 THROUGH E51-18, E51-A, E51-B, E51-C, E-M-1 THROUGH E-M-7 AND E35-13 THROUGH E35-18 AN ADDED ADDITION OF LOTS TO SECTION - E, PARKER COUNTY MEMORIAL PARK AND BEING A PART OF THE R. A. KIDWELL SURVEY, ABSTRACT 2016, PARKER COUNTY, TEXAS ACCORDING TO THE PLAT RECORDED IN THE PLAT CABINET A, SLIDE 48, PLAT RECORDS, PARKER COUNTY, TEXAS.

U.S. HWY. 180 R.O.W.

U. S. HIGHWAY NO. 180

SECTION - BL { Baby Land } LOT DEMINSIONS 3'FT. X 4'FT. LOTS 1 - 118



SECTION D
{ Plat Cabinet - A, Slide 58 }
Plat Records, Parker County,
Texas

SECTION B
{ Plat Cabinet - A, Slide 57 }
Plat Records, Parker County,
Texas

SECTION A
{ Plat Cabinet - A, Slide 57 }
Plat Records, Parker County,
Texas