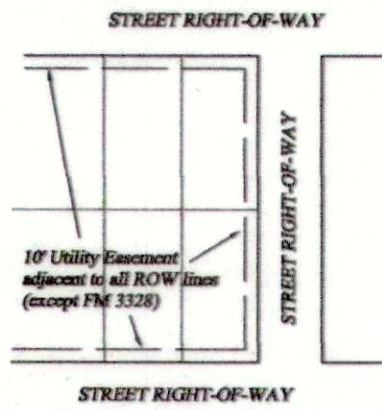
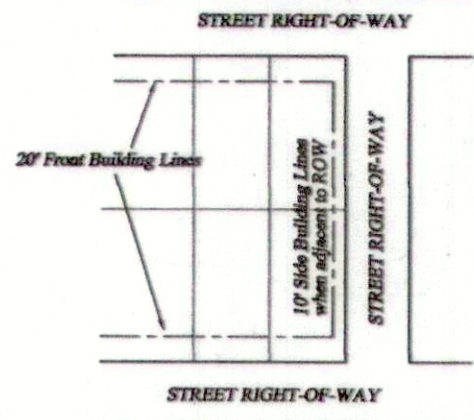


D-559

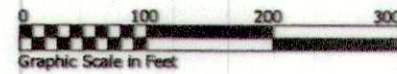
UTILITY EASEMENT DETAIL



BUILDING LINE DETAIL



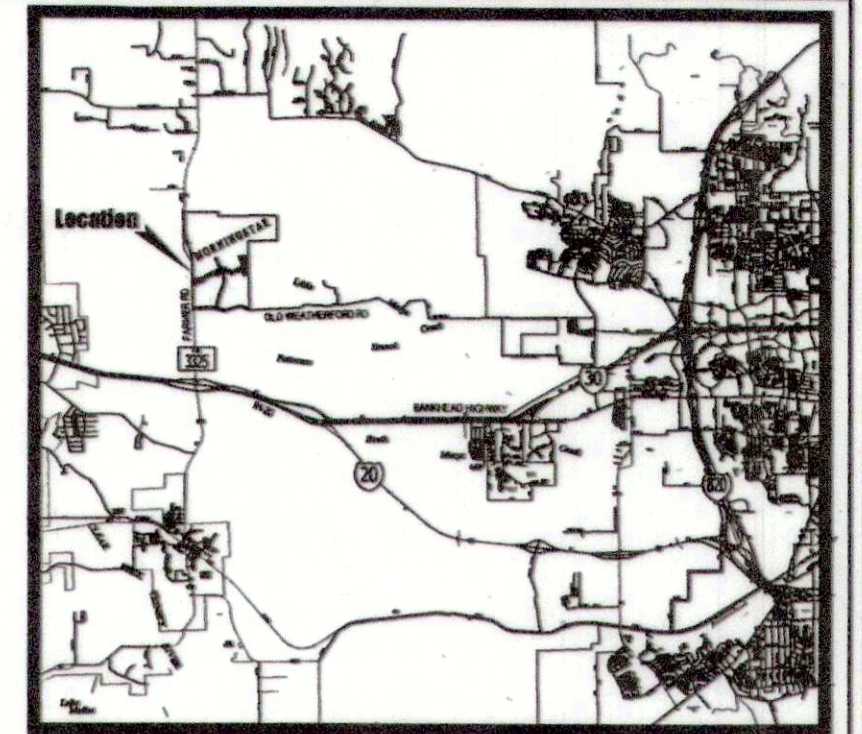
MILLER SURVEYING EST. 1965



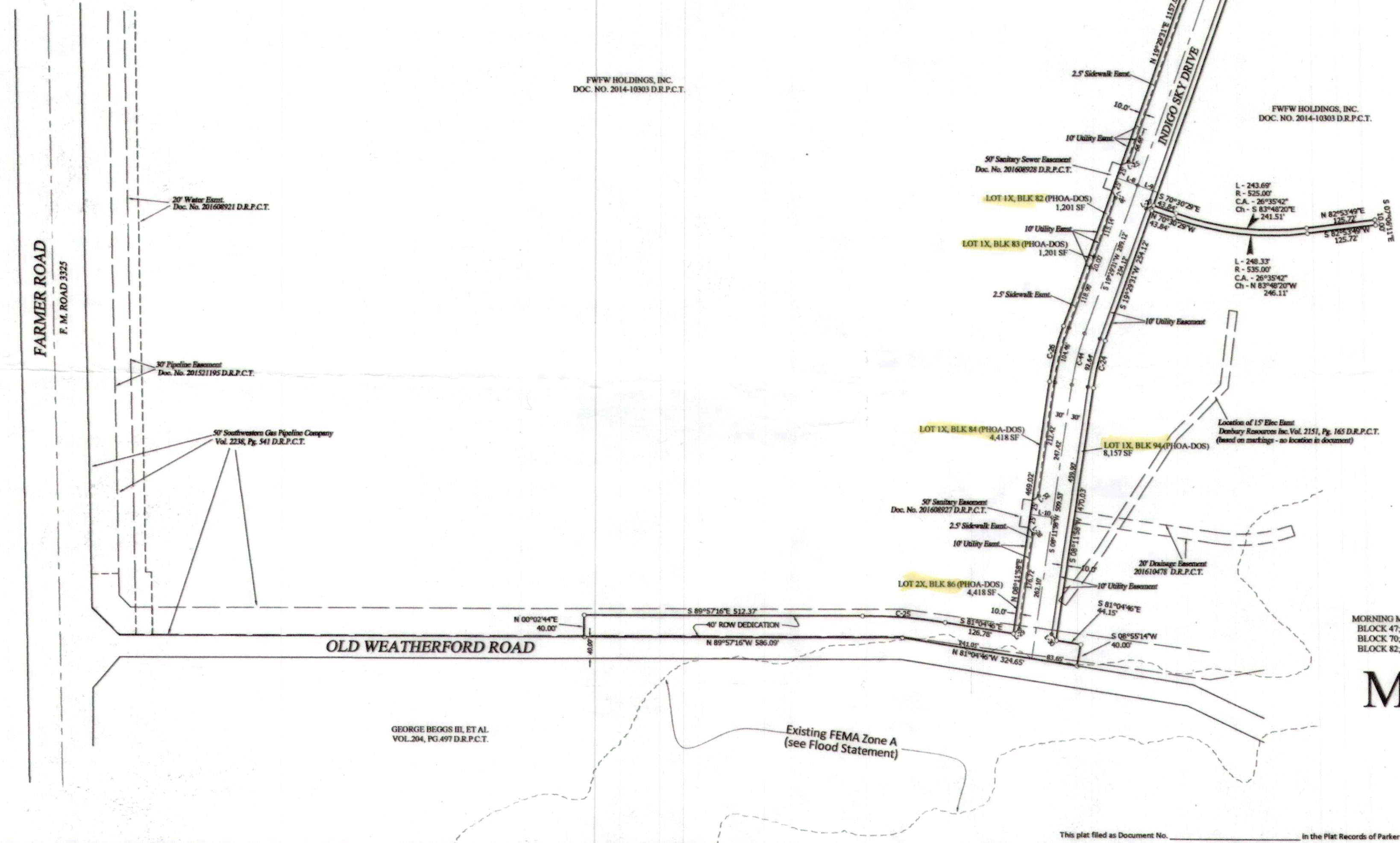
DEVELOPMENT TABLE

Total Acreage	-	47.781 Acres
Total number of residential lots	-	0
Total number of PHOA-DOS lots	-	21
Smallest residential lot	-	N/A
Total ROW Dedication	-	422,967 SF (9.710 Ac)
HOA Lot total area	-	38,071 Ac
Density	-	N/A

PHOA-DOS = Private Home Owners' Association / Developer
 Open Space
 W.M.E. = Well & Well Maintenance Easement
 U.E. = Utility Easement
 W.E. = Water Easement



MATCHLINE - SEE SHEET 1



FWFW HOLDINGS, INC. DOC. NO. 2014-10303 D.R.P.C.T.

FWFW HOLDINGS, INC. DOC. NO. 2014-10303 D.R.P.C.T.

OWNER/APPLICANT
FG Aledo Development, LLC, a Texas limited liability company
3045 Leckland Road
Fort Worth, Texas 76116
817-925-9297
Contact: Kim Gill, President

MILLER
Surveying, Inc.
 Commercial • Residential • Municipal
 430 Mid Canal Blvd. 817-577-1052
 Hunt, Texas 76054 Tel. # Fax. 1010040
 MillerSurvey.net



"o" at corners indicates a 1/2" MILLER 5665 capped steel rod set.

The Final Plat of
MORNING STAR TRAIL AND INDIGO SKY DRIVE, AND LOT 1, BLOCK 38, LOT 1X, BLOCK 38, LOT 1X, BLOCK 47, LOT 1X, BLOCK 50, LOT 1X, BLOCK 51, LOT 1X, BLOCK 52, LOT 1X, BLOCK 62, LOT 1X, BLOCK 70, LOT 1X, BLOCK 73, LOT 1X, BLOCK 75, LOT 1X, BLOCK 76, LOT 1X, BLOCK 81, LOT 1X, BLOCK 82, LOT 1X, BLOCK 83, LOT 1X, BLOCK 84, LOT 2X, BLOCK 86, LOT 1X, BLOCK 88, LOT 1X, BLOCK 92, LOT 1X, BLOCK 94, LOT 1X, BLOCK 98, AND LOT 1X, BLOCK 99

MORNINGSTAR

an addition to
PARKER COUNTY, TEXAS
Consisting of 21 lots and being 47.781 acres of land out of the
P. J. McClary Survey, Abstract No. 907
Prepared in October 2015

SHEET THREE OF FIVE

This plat filed as Document No. _____ in the Plat Records of Parker County, Texas. Job No. 13121 • Plot File 13121 Spine Plat

20907.001.003.00

ACCT. NO: 15252
SCH. DIST: AL
CITY: K-18
MAP NO.: