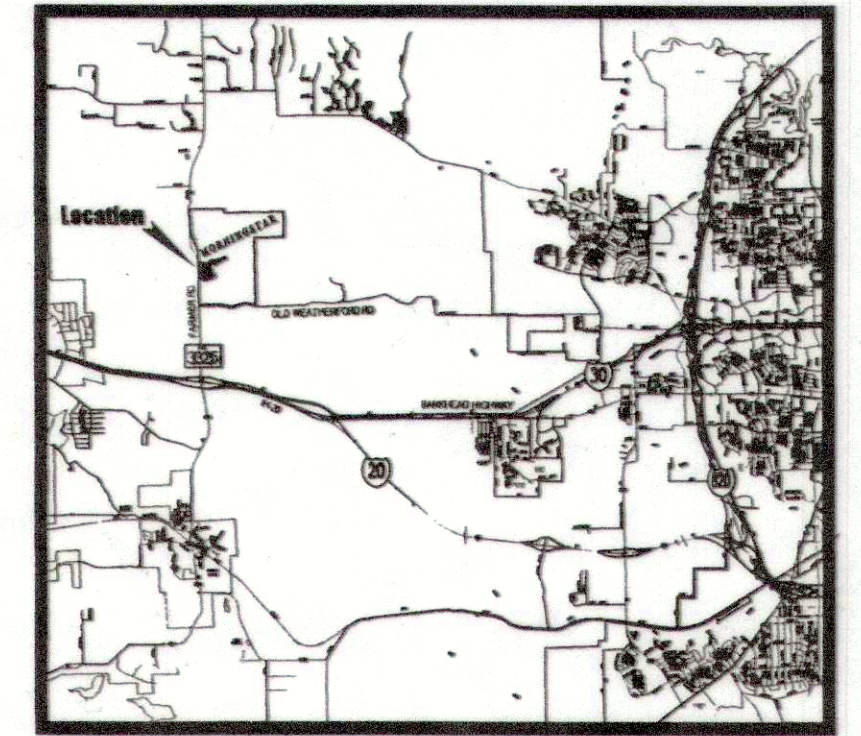




MILLER SURVEYING
EST. 1985



FG ALEDO, DEVELOPMENT, L.L.C.
DOC. NO. 2014-1038 D.R.P.C.T.

15' Water Easement
Doc. No. 201608985, D.R.P.C.T.

50' Water & Sewer Easement
Doc. No. 201608987, D.R.P.C.T.

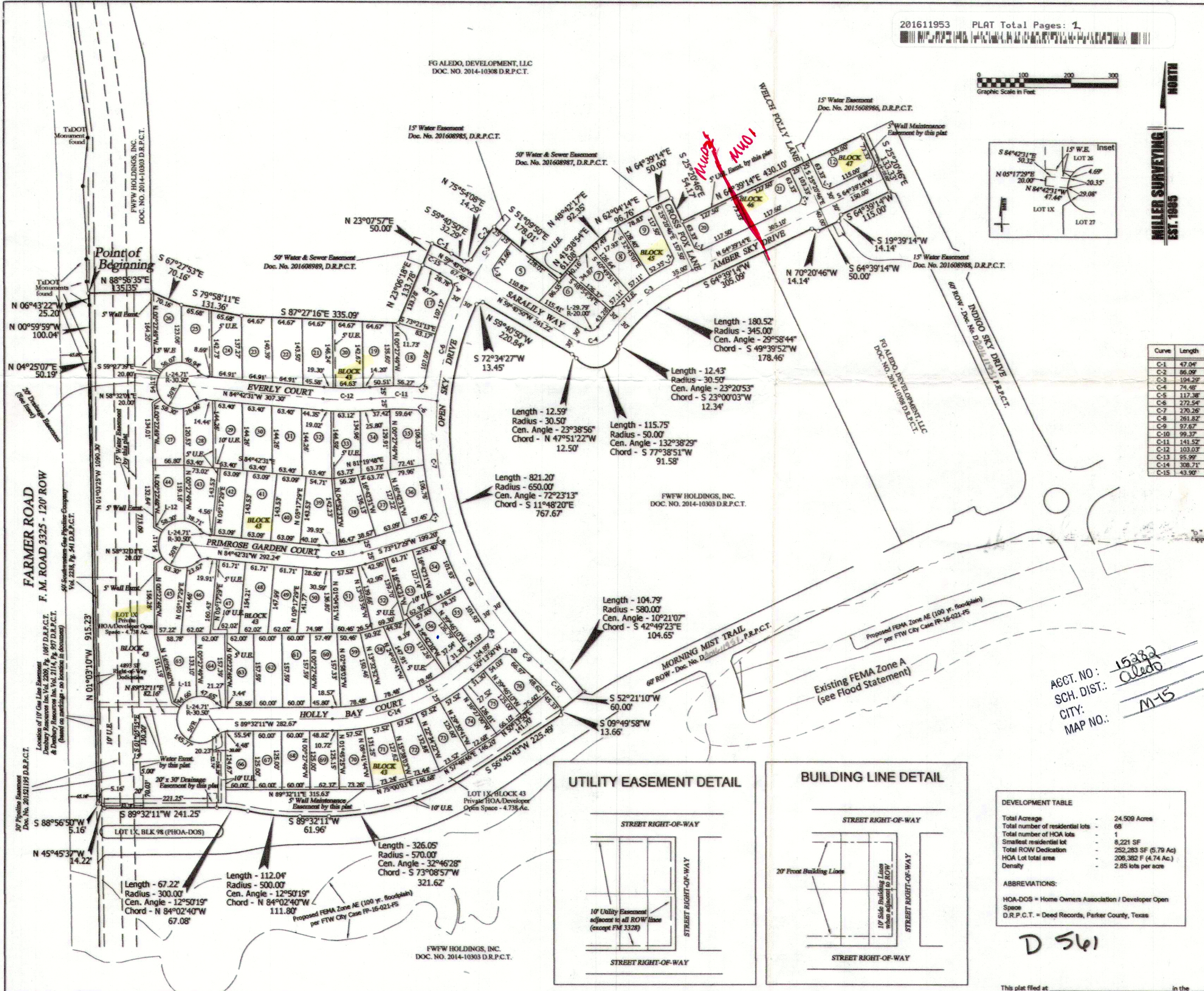
15' Water Easement
Doc. No. 20150608986, D.R.P.C.T.

5' Wall Maintenance Easement by this plat

50' Water & Sewer Easement
Doc. No. 201608987, D.R.P.C.T.

15' Water Easement
Doc. No. 201608988, D.R.P.C.T.

5' Wall Maintenance Easement by this plat



Curve	Length	Radius	Cen. Angle	Chord
C-1	47.04'	375.00'	07°11'13"	S 63°16'26"E 47.01'
C-2	86.09'	710.00'	06°56'51"	N 35°21'45"E 86.04'
C-3	104.29'	375.00'	29°11'09"	S 49°48'40"W 192.13'
C-4	74.48'	50.00'	85°21'04"	S 77°38'38"W 67.75'
C-5	117.38'	685.00'	09°49'05"	N 33°55'38"E 117.23'
C-6	272.54'	680.00'	22°57'49"	S 16°32'37"W 270.23'
C-7	270.26'	680.00'	22°46'17"	S 06°18'26"E 268.48'
C-8	261.82'	680.00'	22°03'37"	S 28°44'22"E 260.20'
C-9	97.67'	680.00'	08°13'48"	S 43°53'04"E 97.59'
C-10	99.37'	550.00'	10°21'07"	S 42°49'23"E 99.26'
C-11	141.52'	525.00'	15°26'40"	N 88°13'49"W 141.09'
C-12	103.03'	525.00'	11°14'38"	S 89°40'10"W 102.86'
C-13	95.99'	250.00'	22°00'00"	S 84°17'29"W 95.40'
C-14	308.71'	450.00'	39°18'21"	S 09°53'00"W 302.69'
C-15	43.90'	350.00'	07°11'13"	N 63°16'26"W 43.87'

L-1	S 70°20'46"E 14.14'
L-2	S 19°39'14"W 14.14'
L-3	N 13°50'11"W 13.93'
L-4	S 16°59'28"E 14.70'
L-5	S 11°28'47"W 14.38'
L-6	S 40°44'59"E 14.51'
L-7	N 29°01'22"E 14.32'
L-8	S 63°23'56"E 14.55'
L-9	S 06°26'28"W 14.44'
L-10	S 85°58'49"E 14.44'
L-11	S 59°50'10"E 30.00'
L-12	S 59°27'39"E 20.00'

OWNER/APPLICANT
 FG Aledo Development, L.L.C. a Texas limited liability company
 3045 Lactonia Road
 Fort Worth, Texas 76116
 817-925-9297
 Contact: Kim Gill, President

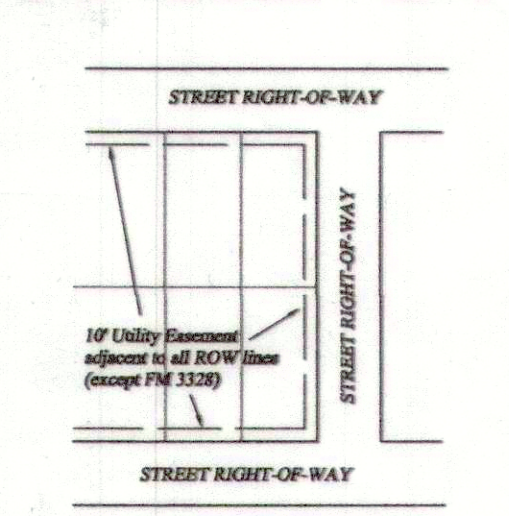
"D" all corners indicates a 1/2" MILLER 5665 capped steel set.

ABCT. NO.: 15382
 SCH. DIST.: Aledo
 CITY: M-15
 MAP NO.:

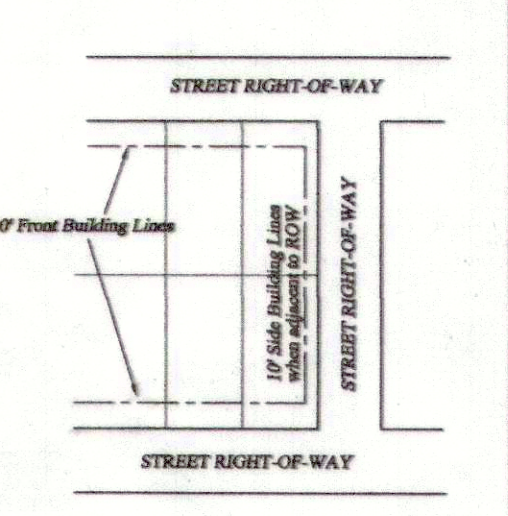
MILLER
 Surveying, Inc.
 Commercial - Residential - Municipal
 430 Main Street
 Hurst, Texas 76054
 MillerSurvey.net



UTILITY EASEMENT DETAIL



BUILDING LINE DETAIL



DEVELOPMENT TABLE

Total Acreage	24,509 Acres
Total number of residential lots	68
Total number of HOA lots	1
Smallest residential lot	8,221 SF
Total ROW Dedication	252,283 SF (6.79 Ac)
HOA Lot total area	208,382 SF (4.74 Ac.)
Density	2.85 lots per acre

ABBREVIATIONS:
 HOA-DOS = Home Owners Association / Developer Open Space
 D.R.P.C.T. = Deed Records, Parker County, Texas

The Final Plat of
 Lot 1X and Lots 17 thru 76, Block 43; Lots 5 thru 9, Block 45;
 Lots 20 thru 21, Block 46; and Lot 12, Block 47

MORNINGSTAR

an addition to
 PARKER COUNTY, TEXAS
 Consisting of 69 lots and being 24,509 acres of land out of the
 P. J. McClary Survey, Abstract No. 907
 Prepared in October 2015

SHEET ONE OF TWO

20907.001.000.00