

18/80

Mulkins Addition to Weatherford.

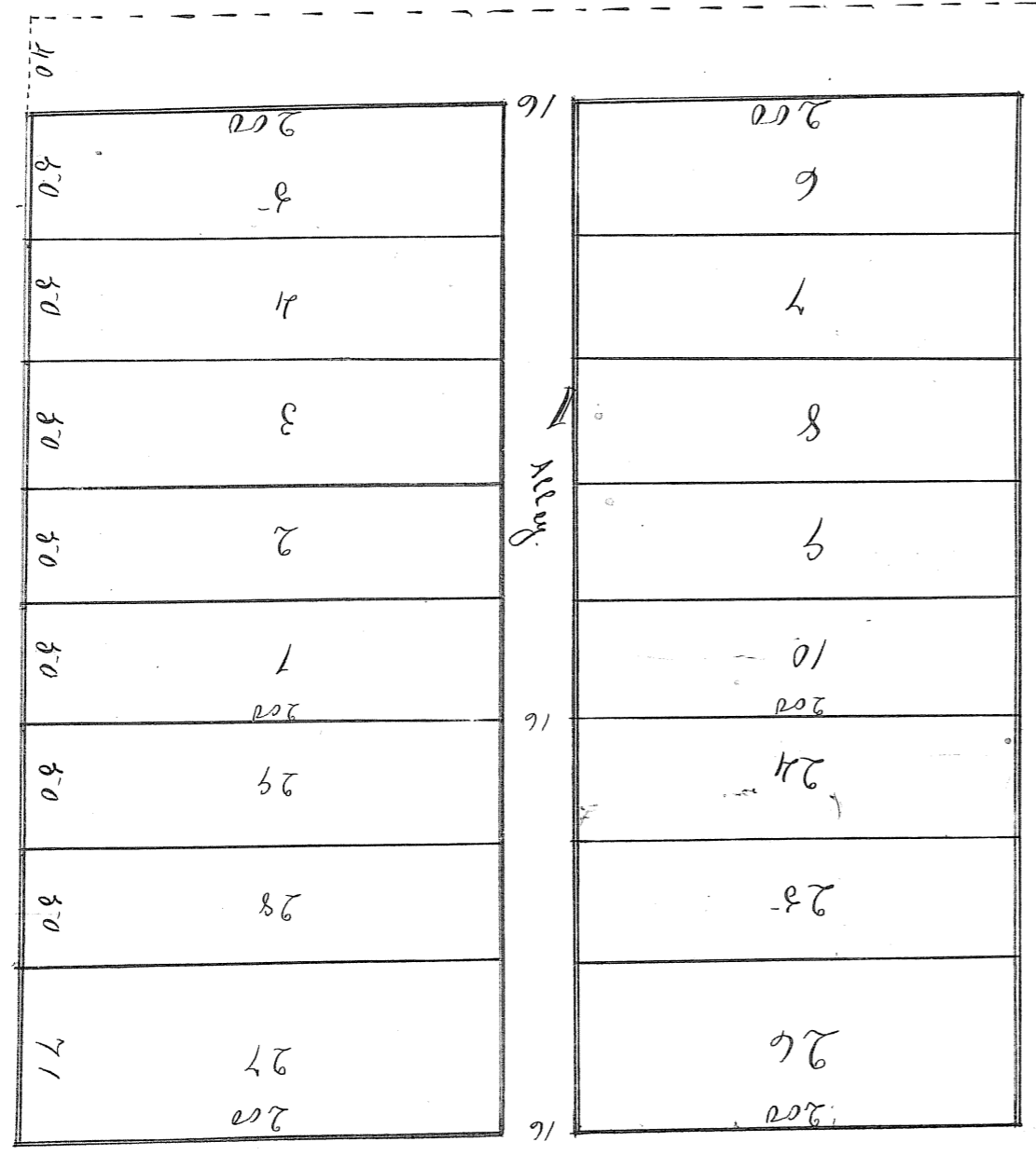
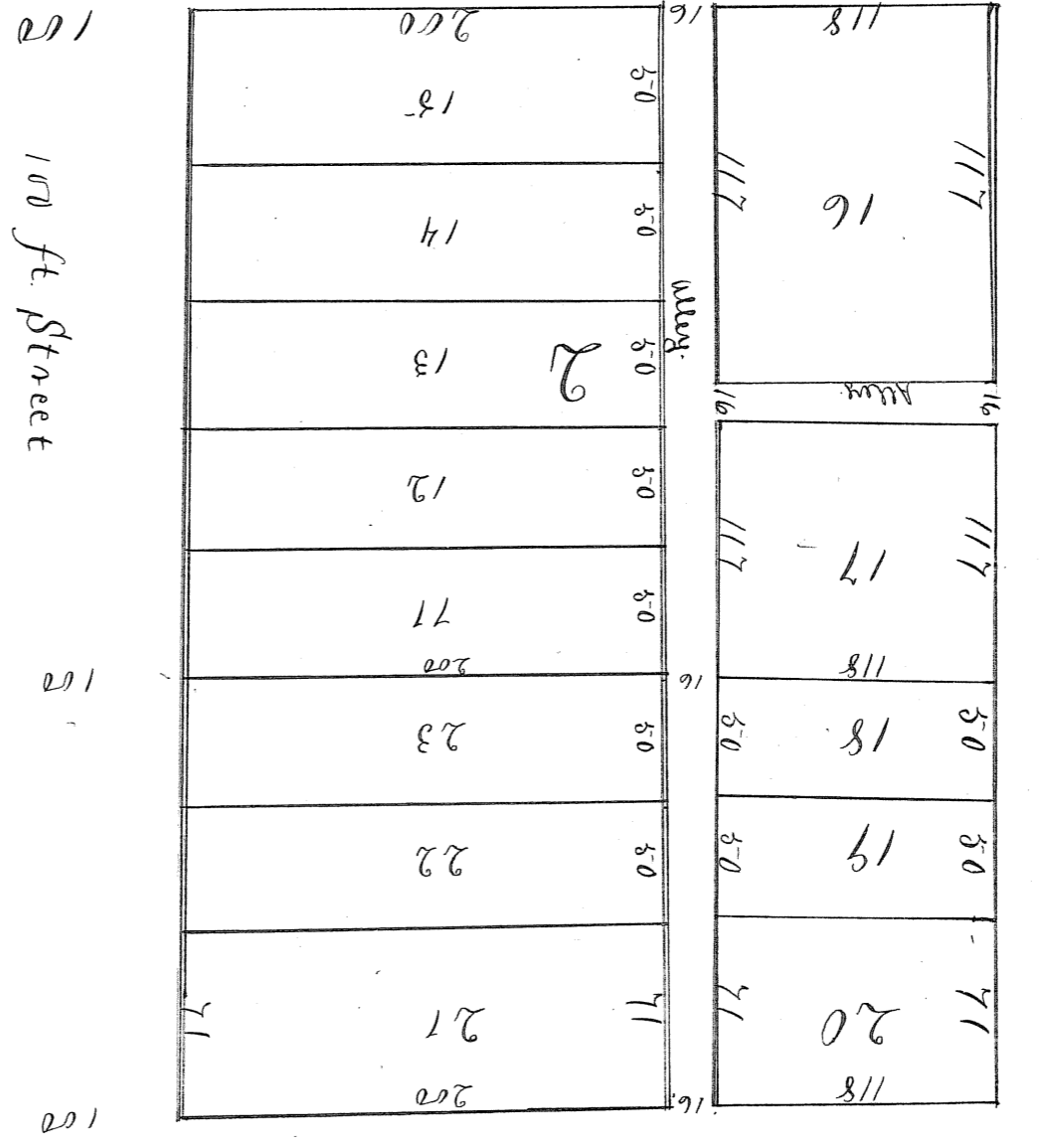
Filed March 23rd 1885 at 2 o'clock pm. for record.

Mapy recorded march 25th 1885. J. A. Mythe. County Clerk

Parker County Texas. By B.W. Akand. Deputy CLK.

Scale 20 feet to 1 inch

NS



Surveyed July 1879 Wkip CE

North main Street

2

JK