

A 84

SCALE 1" = 200'

216.51 216.51 216.51
N. 89° 53' 13"
219.68 219.68 219.68
1.78 AC. 1.78 AC. 1.78 AC.

43
1.78 AC.

42
1.78 AC.

41
1.78 AC.

219.68 219.68 219.68
JAMES E. KING
558.90 558.90 558.90
178 AC. 178 AC. 178 AC.

213.02 213.02 213.02
3.0 AC. 3.0 AC. 3.0 AC.
215.68 215.68 215.68
359.13 359.13 359.13
Browning
57.11 57.11 57.11
N. 89° 53' 13"
700.0 700.0 700.0
5.87° 43' 10"E.

44
3.0 AC.

45
3.0 AC.

256.3 256.3 256.3
283.63 283.63 283.63
240.63 240.63 240.63
209.83 209.83 209.83
298.16 298.16 298.16
209.83 209.83 209.83
1.51 AC. 1.51 AC. 1.51 AC.
1.51 AC. 1.51 AC. 1.51 AC.
11° 43' E. 11° 43' E. 11° 43' E.
WAYNE
WAYNE
WAYNE
REYNOLDS
REYNOLDS
REYNOLDS

51
1.51 AC.

52
1.51 AC.

49
1.51 AC.

209.84
209.84
209.84

287.11 287.11 287.11
249.02 249.02 249.02
1.72 AC. 1.72 AC. 1.72 AC.
227.85 227.85 227.85
211.31 211.31 211.31
1.72 AC. 1.72 AC. 1.72 AC.
212.4 212.4 212.4
368.02 368.02 368.02
180.21 180.21 180.21
2.56 AC. 2.56 AC. 2.56 AC.
638.22 638.22 638.22
3.23 AC. 3.23 AC. 3.23 AC.
641.52 641.52 641.52
10 10 10

15
1.72 AC.

14
1.72 AC.

13
1.72 AC.

12
2.56 AC.

11
3.23 AC.

10
3.23 AC.

280.16 280.16 280.16
465.61 465.61 465.61
3.01 AC. 3.01 AC. 3.01 AC.
283.81 283.81 283.81
587.40 587.40 587.40
271.0 271.0 271.0
3.67 AC. 3.67 AC. 3.67 AC.
283.82 283.82 283.82
587.40 587.40 587.40
N. 00° 48' 17" W. N. 00° 48' 17" W. N. 00° 48' 17" W.

R. P. 6
REYNOLDS

3.01 AC.

3.67 AC.

204.79 204.79 204.79
200.83 200.83 200.83
2.07 AC. 2.07 AC. 2.07 AC.
230.0 230.0 230.0
S. 89° 53' 59" E.
SUR
WILLIAM MILLER
WILLIAM MILLER
WILLIAM MILLER
390.82 390.82 390.82
587.40 587.40 587.40

R. P. 5
REYNOLDS

3.67 AC.

3.67 AC.

200.83 200.83 200.83
2.07 AC. 2.07 AC. 2.07 AC.
230.0 230.0 230.0
S. 89° 53' 59" E. S. 89° 53' 59" E. S. 89° 53' 59" E.
1.5 AC. 1.5 AC. 1.5 AC.

15740-1-2-7-1-22 SAC

228.35 228.35 228.35
15740-1-2-7-1-22

25
3.17 AC.

24
1.85 AC.

23
1.85 AC.

22
1.85 AC.

21
1.85 AC.

20
1.85 AC.

19
1.85 AC.

18
1.85 AC.

17
1.85 AC.

16
2.0 AC.

15
1.72 AC.

220.0 220.0 220.0
218.08 218.08 218.08
248.02 248.02 248.02
N. 02° 34' 14" W. N. 02° 34' 14" W. N. 02° 34' 14" W.
WELL HEAD
WELL HEAD
WELL HEAD
340.24 340.24 340.24
340.94 340.94 340.94

24
1.85 AC.

24
1.85 AC.

24
1.85 AC.

24
1.85 AC.

24
1.85 AC.

24
1.85 AC.

24
1.85 AC.

24
1.85 AC.

24
1.85 AC.

24
1.85 AC.

24
1.85 AC.

24
1.85 AC.

24
1.85 AC.

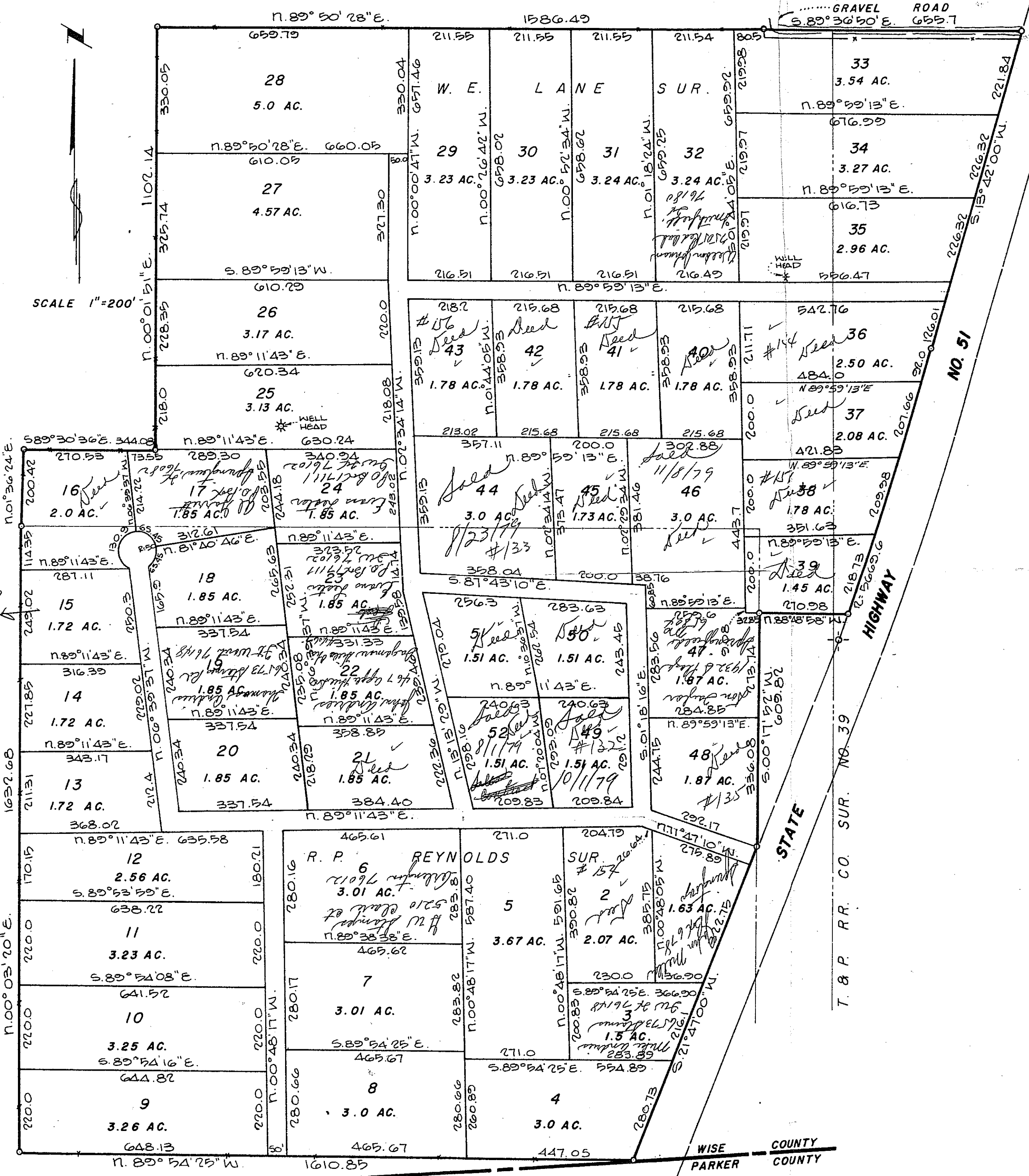
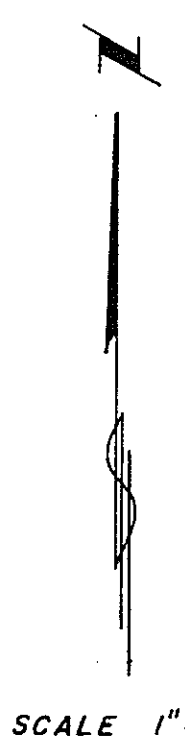
24
1.85 AC.

24
1.85 AC.

24
1.85 AC.

24
1.85 AC.

24
1.85 AC.



PLAT SHOWING
OAK COUNTRY II
 A SUBDIVISION OF A PORTION OF
 THE W. E. LANE SURVEY, ABST. NO. 1231,
 THE R. P. REYNOLDS SUR. ABST. NO. 1496
 AND THE T. & P. RR. CO. SUR. NO. 39,
 ABST. NO. 847, WISE COUNTY, TEXAS

*Tracts with names on sales contract -
 Seeded tracts designated*

PREPARED FROM SURVEYS MADE
 ON THE GROUND IN JUNE 1979



T. W. BARROW
 REGISTERED PUBLIC SURVEYOR
 6049 HERSCHEL DR
 WATAUGA, TEXAS 76148
 485-3052

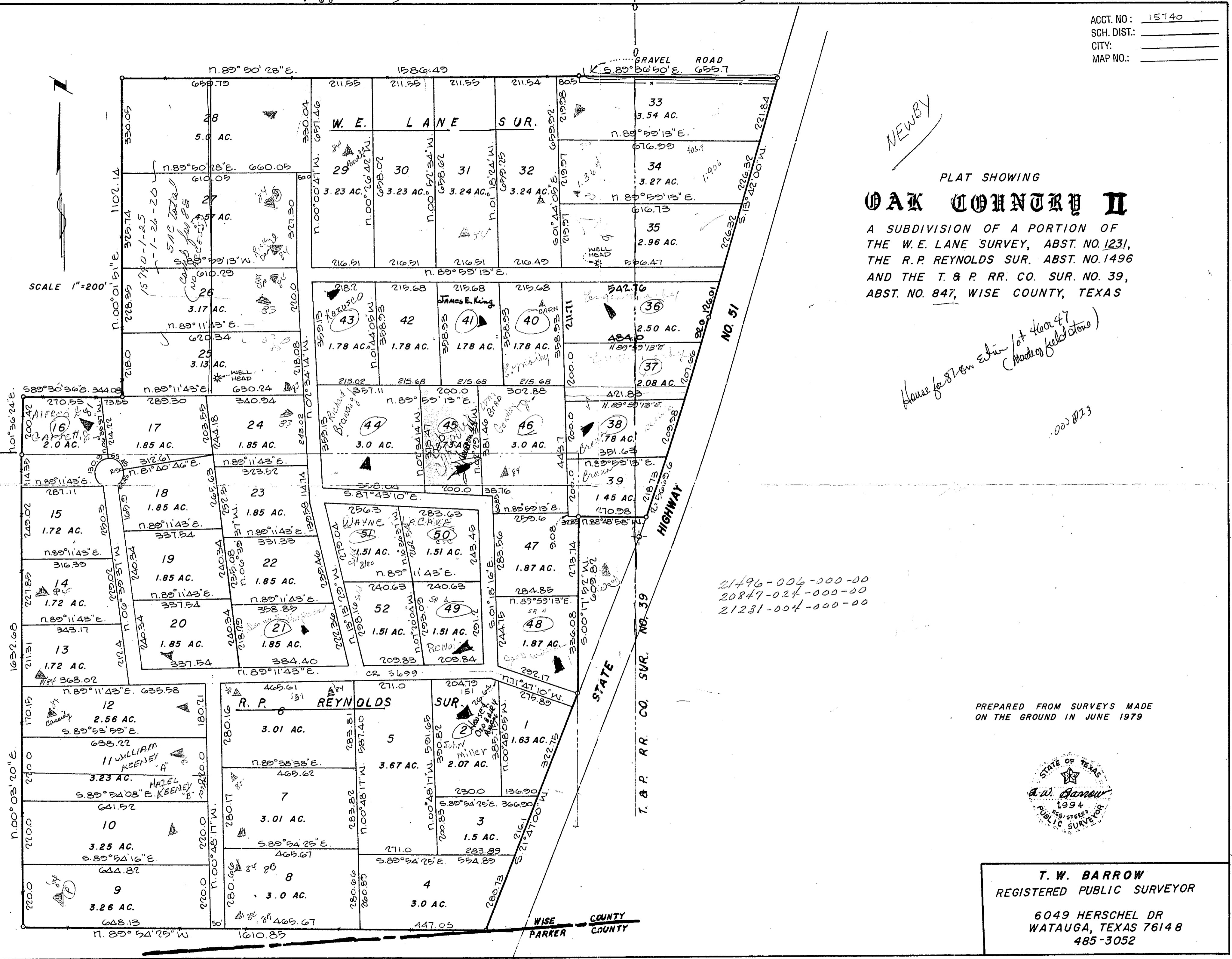
W to Lane #W1231

T & R #847W

ACCT. NO: 15140
SCH. DIST.:
CITY:
MAP NO.:



SCALE 1"=200'



NEWBY

PLAT SHOWING
OAK COUNTRY II
A SUBDIVISION OF A PORTION OF
THE W. E. LANE SURVEY, ABST. NO. 1231,
THE R. P. REYNOLDS SUR. ABST. NO. 1496
AND THE T. & P. RR. CO. SUR. NO. 39,
ABST. NO. 847, WISE COUNTY, TEXAS

*Home for 87000 shares of 400 47
(made of field stones)*

21496-006-000-00
20847-024-000-00
21231-004-000-00

PREPARED FROM SURVEYS MADE
ON THE GROUND IN JUNE 1979

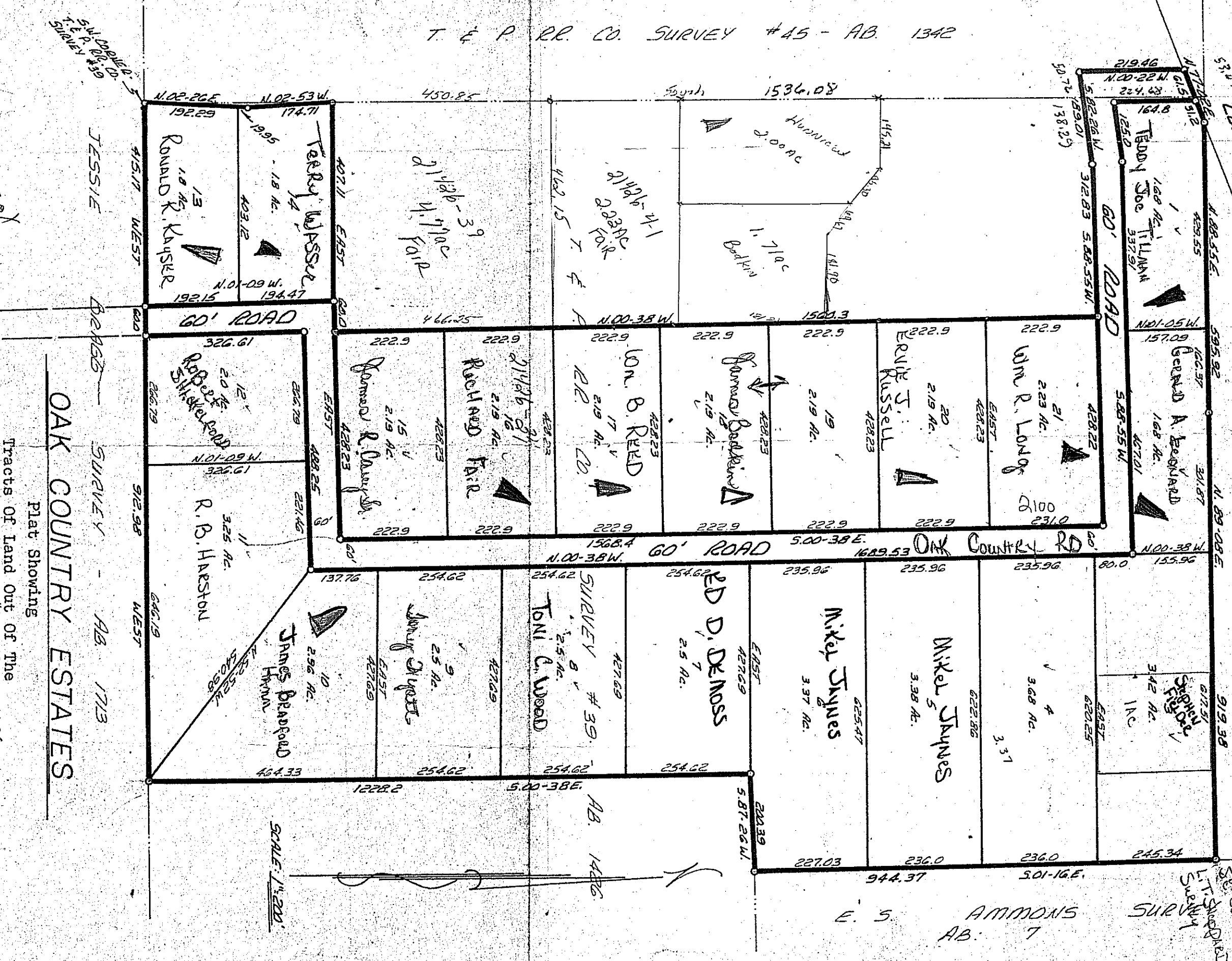


T. W. BARROW
REGISTERED PUBLIC SURVEYOR
6049 HERSCHEL DR
WATAUGA, TEXAS 76148
485-3052

WISE COUNTY
PARKER COUNTY

54
60
34

T. & P. RR. CO. SURVEY #45 - AB. 1342



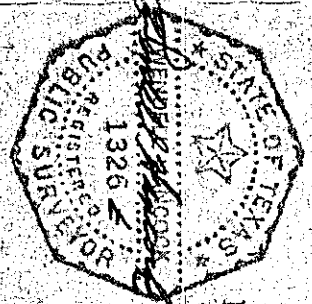
Plat Showing
 Tracts of Land Out of The
 T. & P. RR. CO. SURVEY #39, Abst. 1426,
 and the
 T. & P. RR. CO. SURVEY #45, Abst. 1342,
 in Parker County, Texas.
 (See Attached Field Notes)

OAK COUNTRY ESTATES

SCALE: 1" = 200'

This certifies this plat is a true and correct representation of an actual survey made on the ground under my supervision. An iron pin was placed at each property corner and there are no encroachments or protrusions except as shown.

DATE: 5-24-77



WENDELL HANCOCK
 Registered Public Surveyor #1326
 1721 Haltom Road
 Fort Worth, Texas 76117
 834-6243