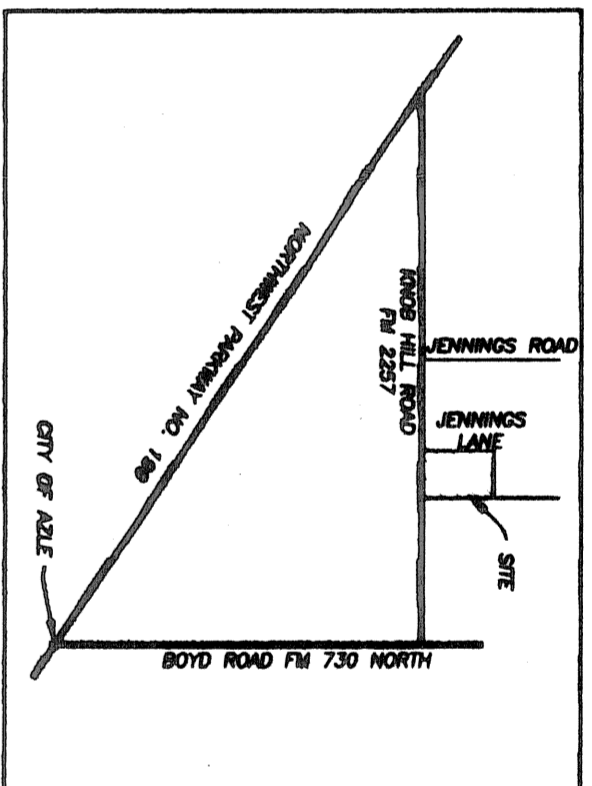
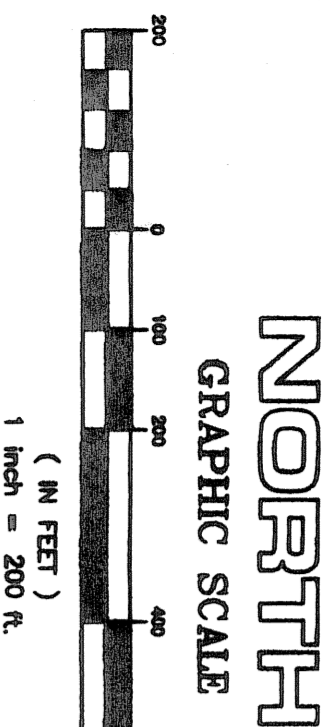


NOTES:
1/2" CAPPED "4277" REBAR RODS SET AT ALL CORNERS UNLESS NOTED OTHERWISE UPON FILING OF THIS PLAT.

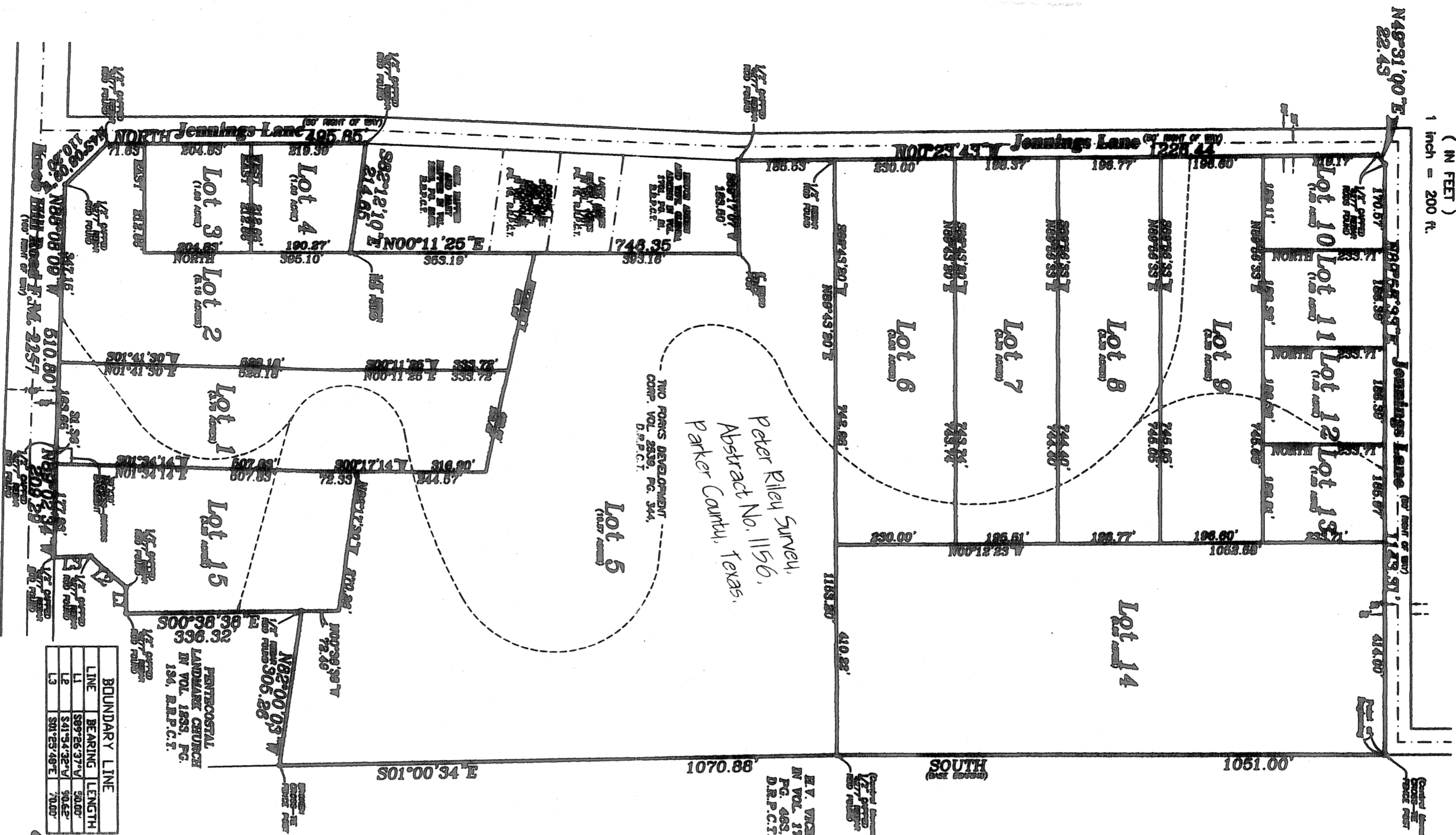
THE CITY OF RENO DOES NOT WISH TO EXERCISE THEIR E.T.J. AUTHORITY IN REFERENCE TO THIS SUBDIVISION FOR THE PURPOSE OF PLATING THIS SUBDIVISION.

Doc# 689032
Book 2647 Page 1230

C-709



(NOT TO SCALE)
VICINITY MAP
CITY OF ADE



LINE	BEARING	LENGTH
1	S89°28'37" W	345.26
2	S17°34'25" E	345.26
3	S18°53'48" E	180

Rebecca Munnitt
Public

8.16.09
By Commission Expires



Notes:
According to the Flood Hazard Boundary Map for the City of Bryan, Parker County, Comenunity Parcel No. 480588 04 H, Dated July 23, 1976, this tract is not in the 100 year flood zone.
WATER SUPPLIED BY:
WALNUT CREEK S.W.D.

APPROVED BY THE PARKER COUNTY COMMISSIONERS
PLAT APPROVED DATE July 9th, 2008
COUNTY JUDGE
BY: *[Signature]*
BY: *[Signature]*
BY: *[Signature]*
BY: *[Signature]*
BY: *[Signature]*

Point Break Addition,

AN ADDITION TO PARKER COUNTY, TEXAS, BEING A PLAT OF A TRACT OF LAND SITUATED IN THE PETER RILEY SURVEY, ABSTRACT NO. 1156, PARKER COUNTY, TEXAS, BEING A PORTION OF THAT SAME TRACT OF LAND DESCRIBED IN A DEED TO TWO FORKS DEVELOPMENT CORPORATION, RECORDED IN VOLUME 2539, PAGE 344, DEED RECORDS, PARKER COUNTY, TEXAS AND CONTAINING 61.74 ACRES OF LAND.

TRI SURVEYING
COUNTIES
116 LOCUST STREET, ARLIS TX 79020
817/444-5365 FAX: 444-4587
EMAIL: tri@tri-surveying.com
www.tri-surveying.com

TEXAS ONE CALL SYSTEM
CALL BEFORE YOU DIG
OR BURN TO LOCATE
UNDERGROUND UTILITIES
1-800-368-5888
CALL 8 HOURS A DAY, 7 DAYS A WEEK.

COMES ARE NOT OFFICIAL
UNLESS SEAL IS DERESSED

1 CERTIFY THAT THIS IS A TRUE AND ACCURATE REPRESENTATION OF THIS SURVEY AS MADE ON THE GROUND.

Rebecca Munnitt
REBECCA MUNNITT
P.L.L.C. No. 4877

06-23-2008

THIS PLAT FILED FOR RECORD IN CABINET _____ SLIDE _____ DATE _____