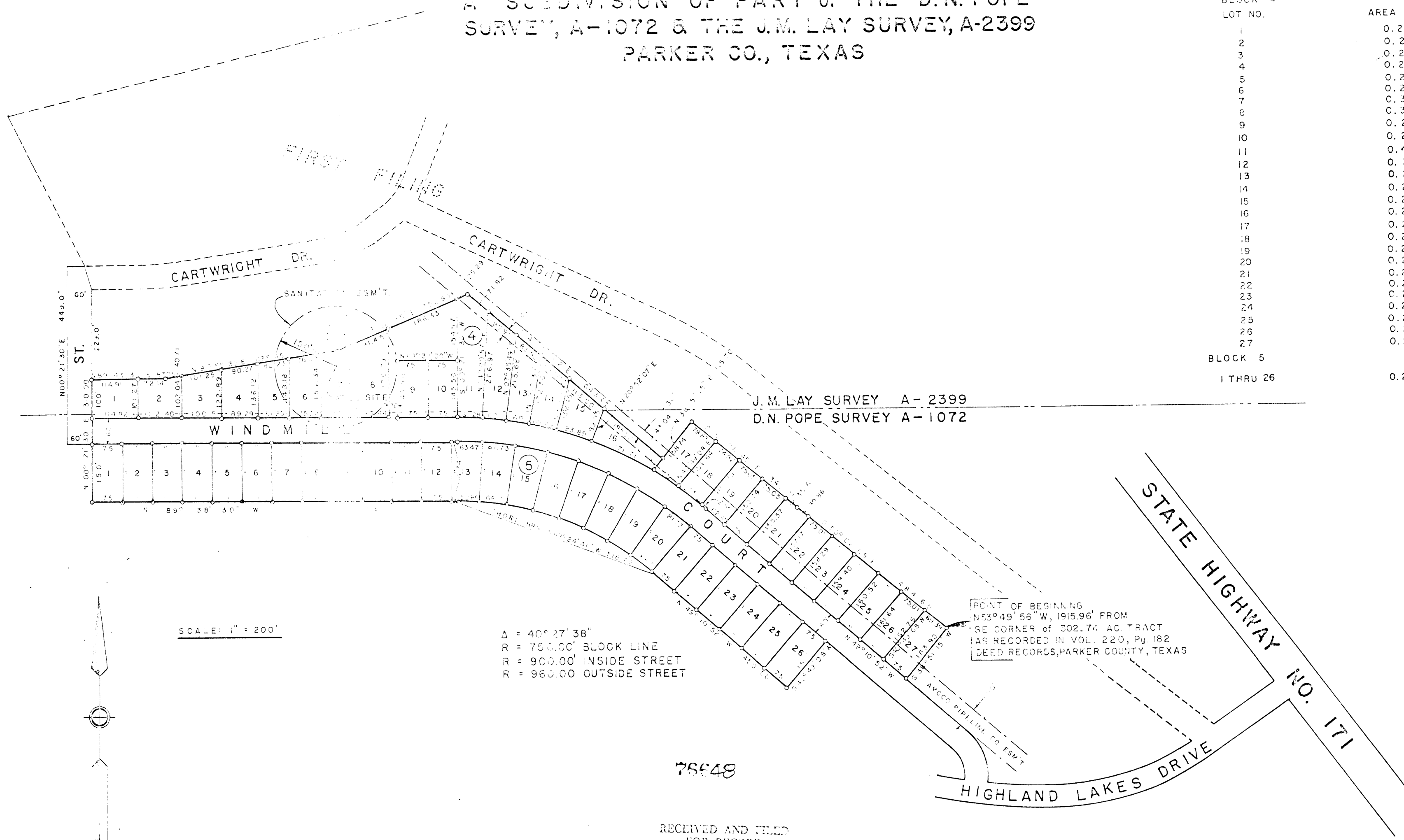


PONDEROSA HILLS, SECOND FILING
 A SUBDIVISION OF PART OF THE D.N. POPE
 SURVEY, A-1072 & THE J.M. LAY SURVEY, A-2399
 PARKER CO., TEXAS

LOT AREAS	
BLOCK 4 LOT NO.	AREA (ACRES)
1	0.265
2	0.265
3	0.265
4	0.265
5	0.265
6	0.265
7	0.350
8	0.393
9	0.250
10	0.250
11	0.476
12	0.373
13	0.294
14	0.258
15	0.251
16	0.263
17	0.274
18	0.260
19	0.261
20	0.265
21	0.269
22	0.272
23	0.273
24	0.275
25	0.277
26	0.279
27	0.271
BLOCK 5 1 THRU 26	0.258



76648

RECEIVED AND FILED
 FOR RECORD
 At 11:15 o'clock A.M.
 JAN 12 1984
 CARRIE REED, Co. Clerk
 PARKER COUNTY, TEXAS
 By *[Signature]* Deputy
 10 0091

I, B. F. Rivers, Registered Public Surveyor No. 2190, State of Texas, Hereby Certify that this plat truly represents the results of a survey performed on the ground.

B. F. Rivers
 B. F. Rivers
 Registered Public Surveyor No. 2190
 State of Texas

STATE OF TEXAS COUNTY OF PARKER
 I hereby certify that this instrument was filed
 in the Public Records Office of this county and
 was duly recorded in the volume and page of the
 same records of Parker County as stamped here-
 on by me.

RECORDED JAN 12 1984
 SEAL
 Carrie Reed
 County Clerk, Parker County, Tex.

APPROVED by Commissioners Court of Parker County, Texas this _____ day of _____, 1983

by *[Signature]*
 County Judge

A-420

see next page

page 1 of 2