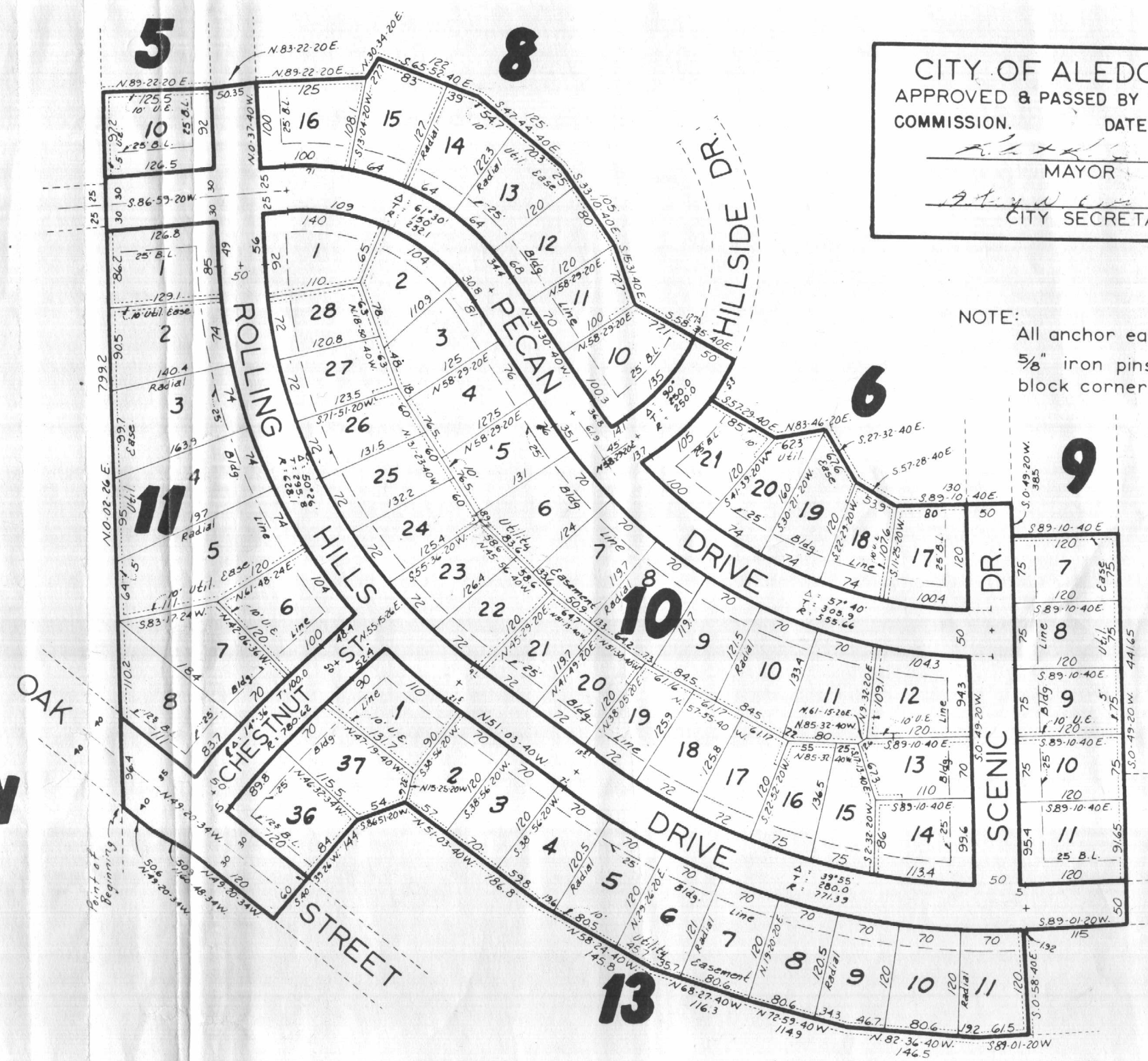


Field Notes

Being a tract or parcel of land out of the L.R. Fawks Survey, Abst. # 483, situated in the City of Aledo, Parker County, Texas and described by metes and bounds as follows: COMMENCING at the Southeast corner of said Fawks Survey, same being the Southwest corner of the F. Sanchez Survey; THENCE South 89 degrees 43 minutes 50 seconds East along the South line of said Fawks Survey 1805.99 feet; THENCE North 50 degrees 44 minutes West 147.69 feet and North 0 degrees 02 minutes 26 seconds East 520.7 feet to the point of beginning of the tract herein described:  
 THENCE North 0 degrees 02 minutes 26 seconds East 799.2 feet;  
 THENCE North 89 degrees 22 minutes 20 seconds East 125.5 feet;  
 THENCE North 83 degrees 22 minutes 20 seconds East 50.35 feet;  
 THENCE North 89 degrees 22 minutes 20 seconds East 125.0 feet;  
 THENCE North 30 degrees 34 minutes 20 seconds East 27.7 feet;  
 THENCE South 65 degrees 52 minutes 40 seconds East 122.0 feet;  
 THENCE South 47 degrees 44 minutes 40 seconds East 125.0 feet;  
 THENCE South 33 degrees 10 minutes 40 seconds East 105.0 feet;  
 THENCE South 15 degrees 31 minutes 40 seconds East 72.7 feet;  
 THENCE South 58 degrees 35 minutes 40 seconds East 127.1 feet;  
 THENCE Southwesterly along a curve to the right having a radius of 275.0 feet a distance of 53.0 feet;  
 THENCE South 57 degrees 29 minutes 40 seconds East 85.0 feet;  
 THENCE North 83 degrees 46 minutes 20 seconds East 62.3 feet;  
 THENCE South 27 degrees 32 minutes 40 seconds East 67.6 feet;  
 THENCE South 57 degrees 28 minutes 40 seconds East 53.9 feet;  
 THENCE South 89 degrees 10 minutes 40 seconds East 130.0 feet;  
 THENCE South 0 degrees 49 minutes 20 seconds West 38.5 feet;  
 THENCE South 89 degrees 10 minutes 40 seconds East 120.0 feet;  
 THENCE South 0 degrees 49 minutes 20 seconds West 441.65 feet;  
 THENCE South 89 degrees 01 minutes 20 seconds West 115.0 feet to the beginning of a curve to the right having a radius of 796.39 feet;  
 THENCE along said curve 1.92 feet;  
 THENCE South 0 degrees 58 minutes 40 seconds East 120.0 feet;  
 THENCE South 89 degrees 01 minutes 20 seconds West 61.5 feet;  
 THENCE North 72 degrees 36 minutes 40 seconds West 146.5 feet;  
 THENCE North 72 degrees 59 minutes 40 seconds West 114.9 feet;  
 THENCE North 58 degrees 24 minutes 40 seconds West 116.3 feet;  
 THENCE North 58 degrees 27 minutes 40 seconds West 145.8 feet;  
 THENCE North 51 degrees 03 minutes 40 seconds West 186.8 feet;  
 THENCE South 86 degrees 51 minutes 20 seconds West 54.0 feet;  
 THENCE South 40 degrees 39 minutes 26 seconds West 144.0 feet;  
 THENCE North 49 degrees 20 minutes 34 seconds West 120.0 feet;  
 THENCE North 60 degrees 48 minutes 34 seconds West 50.9 feet;  
 THENCE North 49 degrees 20 minutes 34 seconds West 50.6 feet to the place of beginning and containing 19.202 acres of land, more or less.



CITY OF ALEDO, TEXAS  
 APPROVED & PASSED BY THE CITY COMMISSION. DATE: 7-13-65  
 \_\_\_\_\_ MAYOR  
 \_\_\_\_\_ CITY SECRETARY

NOTE: All anchor easements are 10' x 30'.  
 5/8" iron pins set at all lot and block corners.

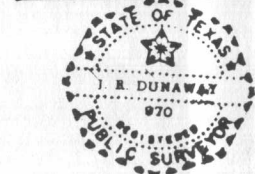
STATE OF TEXAS KNOW ALL MEN BY THESE PRESENTS:  
 COUNTY OF PARKER

That J. N. P. Hines, President of Aledo Development Corporation, owner of the Rolling Hills addition to the City of Aledo, Parker County, Texas, have caused the same to be platted into lots, blocks, streets and utility easements, and do hereby designate such as the Rolling Hills addition, and hereby designate and dedicate said streets, and utility easement to the Public for their use, but in the event said streets shall cease to be used as such, the title thereto shall revert to Aledo Development Corporation, its heirs and assigns. We, the undersigned Mortgagees, hereby consent to the above dedication.

\_\_\_\_\_  
 President  
 \_\_\_\_\_  
 Mortgagee  
 \_\_\_\_\_  
 Mortgagee  
 \_\_\_\_\_  
 Mortgagee  
 \_\_\_\_\_  
 Mortgagee

J. R. DUNAWAY  
 REGISTERED PUBLIC SURVEYOR  
 5300 EDGECLIFF ROAD  
 FORT WORTH, TEXAS  
 PHONE WA 3-9933 OR WA 4-4882  
 I, J. R. Dunaway, certify that this map was prepared from field notes of the Fawks Survey made by me or under my supervision and all data shown are correct and properly indicated to the best of my knowledge and belief. There are no corrections.  
 DATE: 6-10-65

Scale 1" = 100'



J. R. Dunaway Certify this plat is true and correct as surveyed on the ground. Date: 6-10-65

MAP OF "ROLLING HILLS"  
 AN ADDITION TO THE CITY OF ALEDO,  
 PARKER COUNTY, TEXAS,  
 OUT OF THE L.R. FAWKS SURVEY.

ALEDO DEVELOPMENT CORP.

JR. JIM DUNAWAY  
 REGISTERED PUBLIC SURVEYOR  
 5300 EDGECLIFF ROAD  
 FORT WORTH, TEXAS  
 WA 3-9935

FIRST REVISION:  
 To comply with subdivision preliminary layout  
 Lot 11 - Block 5 revised to Lot 10  
 Lots 18 thru 22 - Block 6 revised to lots 17 thru 21  
 Lots 1 thru 13 - Block 13 revised to lots 1 thru 11, 36 & 37

APPROVED BY CITY COMMISSION  
 CITY OF ALEDO - TEXAS  
 January 1, 1966  
 Mayor \_\_\_\_\_  
 City Secretary \_\_\_\_\_

PCA 133