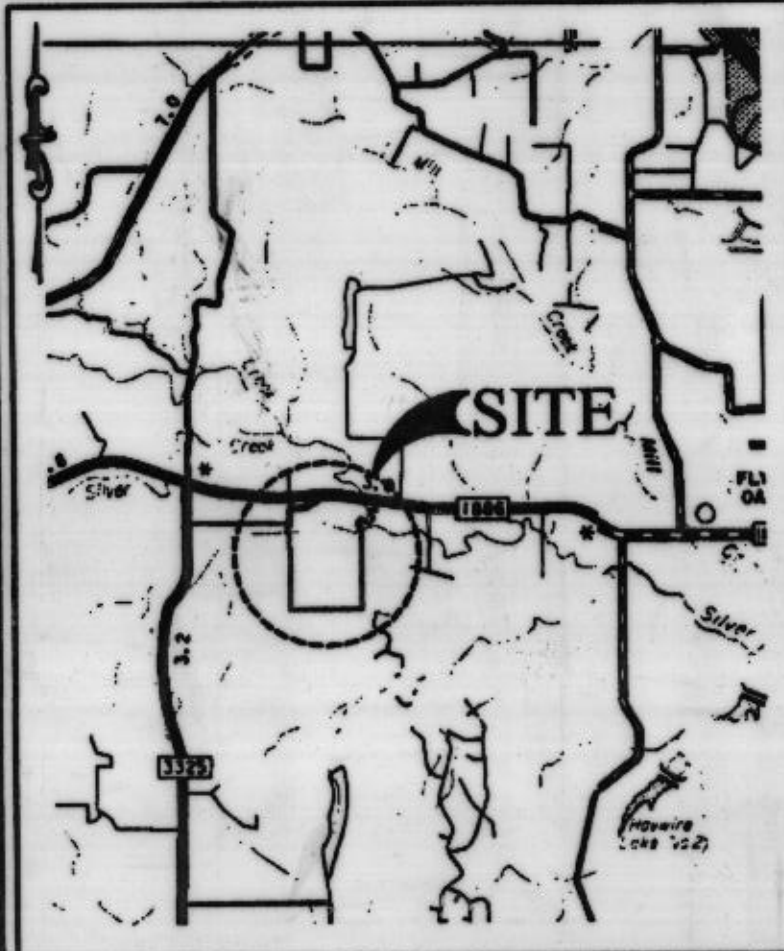
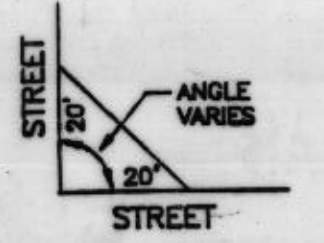
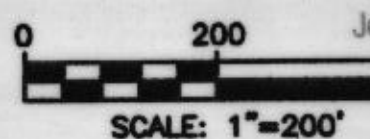


377729



LOCATION MAP  
SCALE: 1"=2 miles

Plot Cabinet  
b  
433  
DEC 08 1999  
RECEIVED AND FILED FOR RECORD  
3:30 O'Clock  
DEC - 8 1999  
Jeannette Brunson, Co. Clerk  
PARKER COUNTY, TEXAS



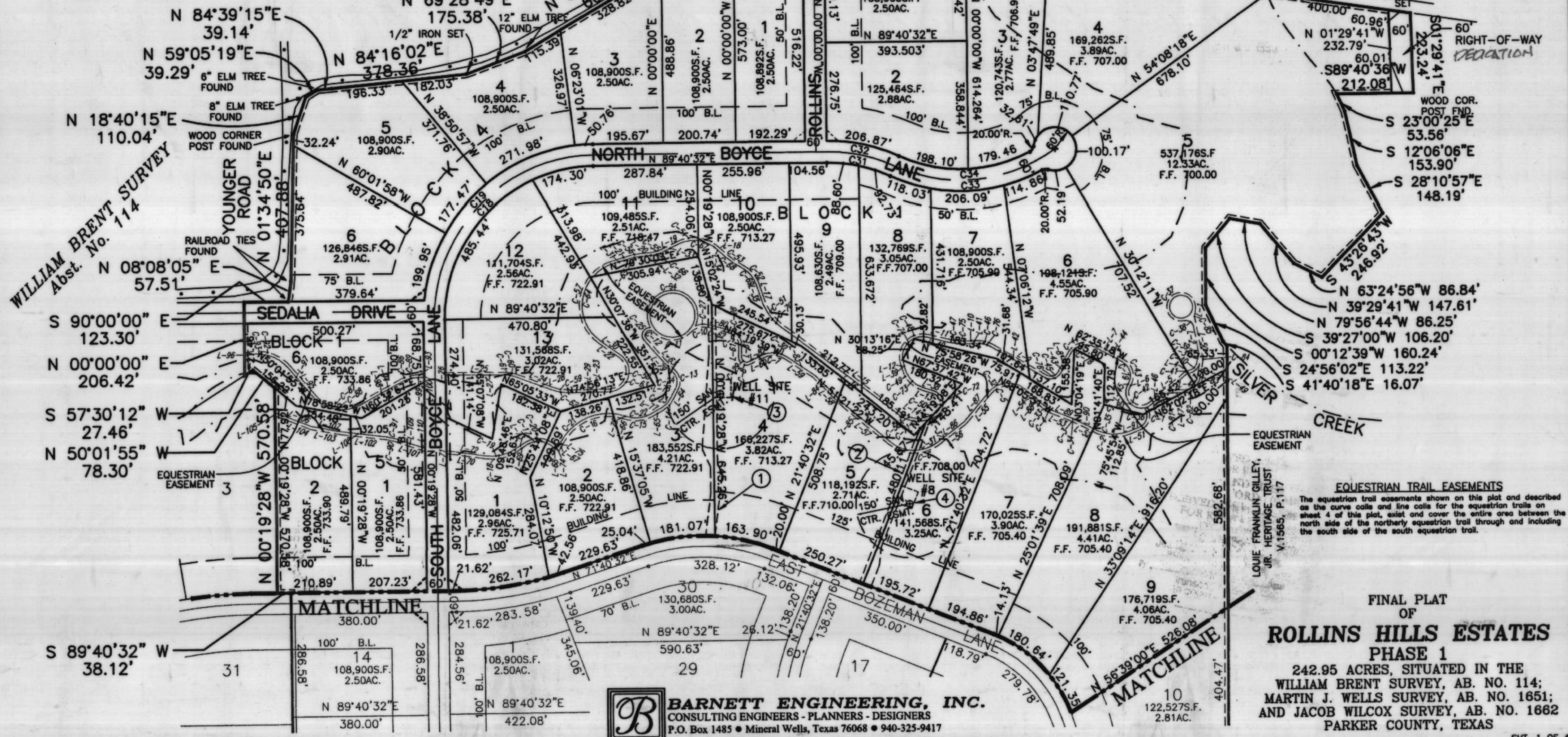
PUBLIC OPEN SPACE EASEMENT (P.O.S.E.) TYPICAL AT ALL STREET INTERSECTIONS

JACOB WILCOX SURVEY  
Abst. No. 1662

- WELL ROAD EASEMENTS**
- 1 See Sheet 4 for Road Easement legal description on Well Site #11.
  - 2 See Sheet 4 for Road Easement legal description on Well Site #8.
- WELL SITE EASEMENTS**
- 3 See sheet 4 for Well Site #11 legal description.
  - 4 See sheet 4 for Well Site #8 legal description.

LEGEND  
F.F. - FINISHED FLOOR ELEVATION

JACK MORRISON ARMSTRONG  
V.213, P.310



**EQUESTRIAN TRAIL EASEMENTS**  
The equestrian trail easements shown on this plat and described as the curve calls and line calls for the equestrian trails on sheet 4 of this plat, exist and cover the entire area between the north side of the northerly equestrian trail through and including the south side of the south equestrian trail.

FINAL PLAT OF  
**ROLLINS HILLS ESTATES**  
PHASE 1  
242.95 ACRES, SITUATED IN THE  
WILLIAM BRENT SURVEY, AB. NO. 114;  
MARTIN J. WELLS SURVEY, AB. NO. 1651;  
AND JACOB WILCOX SURVEY, AB. NO. 1662  
PARKER COUNTY, TEXAS

**BARNETT ENGINEERING, INC.**  
CONSULTING ENGINEERS - PLANNERS - DESIGNERS  
P.O. Box 1485 • Mineral Wells, Texas 76068 • 940-325-9417