

CURVE CALLS FOR EQUESTRIAN TRAIL EASEMENT

LINE CALLS FOR EQUESTRIAN TRAIL EASEMENT

Table with columns: CURVE, RADIUS, TANGENT, LENGTH, DELTA, DEGREE, CHORD, CH BEARING, COURSE, BEARING, DISTANCE, COURSE, BEARING, DISTANCE, COURSE, BEARING, DISTANCE. It lists 94 curve and line segments for an equestrian trail easement.

LEGAL DESCRIPTION 50' x 50' WATER WELL - SITE NO. 11

A parcel of land 50 feet by 50 feet situated in the JACOB WILCOX SURVEY, Abt. No. 1662, Parker County, Texas, as conveyed to Shriners Hospitals For Crippled Children, as recorded in Volume 1441, Page 853, Real Records, Parker County, Texas, and being more particularly described by metes and bounds, as follows:

Commencing at a wood corner post found in the south line of said Shriners Hospitals tract at the northeast corner of that tract of land conveyed to John J. Quinoy and wife, Karen G. Quinoy, as recorded in Volume 1605, Page 322, Real Records, Parker County, Texas, said point of being the northeast corner of the W.K. CLARKE SURVEY, Abt. No. 2194, Parker County, Texas;

- THENCE N 00° 19' 28" W a distance of 1056.63 feet;
THENCE N 89° 40' 32" E a distance of 461.82 feet to a point on a curve to the left;
THENCE along said curve to the left having a radius of 970.00 feet and central angle of 18.0 degrees a distance of 304.73 feet;
THENCE N 71° 40' 32" E a distance of 229.63 feet to a curve to the right;
THENCE along said curve to the right having a radius of 530.00 feet and a central angle of 22° 16' 52" a distance of 206.11 feet;
THENCE N 00° 19' 28" W a distance of 392.89 feet;
THENCE N 89° 40' 32" E a distance of 19.95 feet to the Well No. 11;
THENCE S 89° 40' 32" W a distance of 19.95 feet to the Place of Beginning;
THENCE N 00° 19' 28" W a distance of 40.00 feet to a point for a corner;
THENCE N 89° 40' 32" E a distance of 50.00 feet to a point for a corner;
THENCE S 00° 19' 28" E a distance of 50.00 feet to a point for a corner;
THENCE S 89° 40' 32" W a distance of 50.00 feet to a point for a corner;
THENCE N 00° 19' 28" W a distance of 10.00 feet to the Place of Beginning and containing 2,500 square feet more or less.

LEGAL DESCRIPTION 50' x 50' WATER WELL - SITE NO. 8

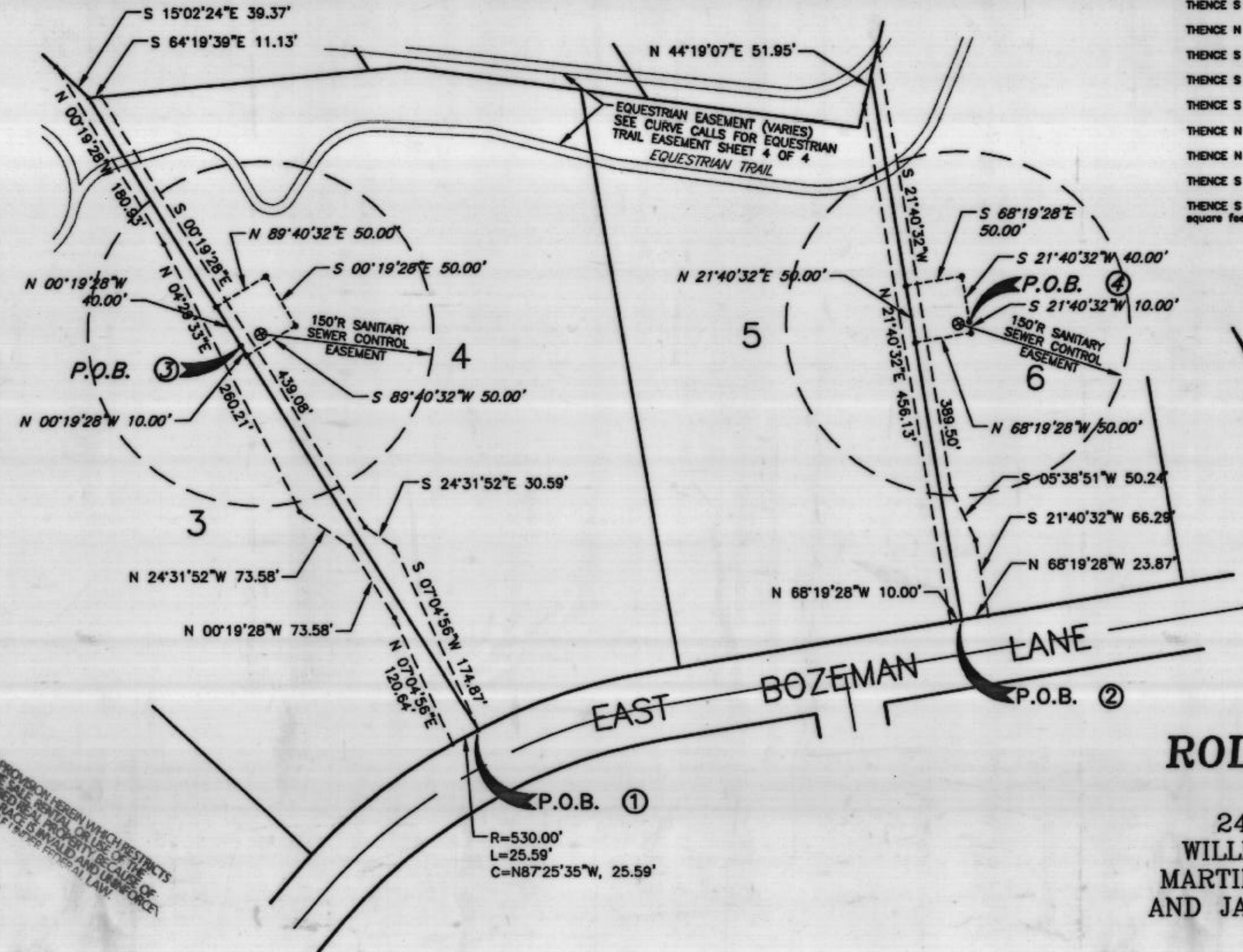
A parcel of land 50 feet by 50 feet situated in the JACOB WILCOX SURVEY, Abt. No. 1662, Parker County, Texas, as conveyed to Shriners Hospitals For Crippled Children, as recorded in Volume 1441, Page 853, Real Records, Parker County, Texas, and being more particularly described by metes and bounds, as follows:

Commencing at a wood corner post found in the south line of said Shriners Hospitals tract at the northeast corner of that tract of land conveyed to John J. Quinoy and wife, Karen G. Quinoy, as recorded in Volume 1605, Page 322, Real Records, Parker County, Texas, said point of being the northeast corner of the W.K. CLARKE SURVEY, Abt. No. 2194, Parker County, Texas;

- THENCE N 00° 19' 28" W a distance of 1056.63 feet;
THENCE N 89° 40' 32" E a distance of 461.82 feet to a point on a curve to the left;
THENCE along said curve to the left having a radius of 970.00 feet and central angle of 18.0 degrees a distance of 304.73 feet;
THENCE N 71° 40' 32" E a distance of 229.63 feet to a curve to the right;
THENCE along said curve to the right having a radius of 530.00 feet and a central angle of 40.0 degrees a distance of 370.01 feet;
THENCE S 89° 19' 28" E a distance of 270.27 feet;
THENCE N 21° 40' 32" E a distance of 254.90 feet;
THENCE S 89° 19' 28" E a distance of 40.00 feet to the Well No. 8;
THENCE S 89° 19' 28" E a distance of 10.00 feet to the Place of Beginning;
THENCE N 89° 19' 28" W a distance of 50.00 feet to a point for a corner;
THENCE N 21° 40' 32" E a distance of 50.00 feet to a point for a corner;
THENCE S 89° 19' 28" E a distance of 50.00 feet to a point for a corner;
THENCE S 21° 40' 32" W a distance of 40.00 feet to the Place of Beginning and containing 2,500 square feet more or less.

WELL ROAD EASEMENTS

- 1 Beginning at the S.W. corner of Lot 4, Block 2 Thence along north r.o.w. of East Bozeman Lane with a left curve: R=530.00', L=25.59', C=25.59', N87°25'35"W; Thence N07°04'56"E, 120.64'; Thence N00°19'28"W, 73.58'; Thence N24°31'52"W, 53.29'; Thence N04°29'33"E, 260.21'; Thence N00°19'28"W, 180.93' to a point on the S.W. property line of Lot 10, Block 1; Thence along said property line S15°02'24"E, 39.37' to N.W. corner of Lot 4, Block 2; Thence along said north property line S64°19'39"E, 11.13'; Thence S00°19'28"E, 439.08'; Thence N24°31'52"W, 53.29'; Thence S07°04'56"W, 174.87' to Point of Beginning containing .408 acres, or 17,782 square feet, more or less.
2 Beginning at the S.W. corner of Lot 6, Block 2; Thence along north r.o.w. of East Bozeman Lane N88°19'28"W, 10.00'; Thence N21°40'32"E, 456.13' to a point on the N.W. property line of Lot 6, Block 2; Thence along said property line N44°19'07"E, 51.95'; Thence S21°40'32"W, 389.50'; Thence S05°38'51"W, 50.24'; Thence S21°40'32"W, 66.29' to a point on the north r.o.w. of East Bozeman Lane; Thence along said r.o.w. N88°19'28"W, 23.87' to the Point of Beginning and containing .249 acres, or 10,857 square feet, more or less.



THE SOLE PURPOSE OF THIS CORRECTION IS THE CLARIFICATION IN READING OF BLOCK 6, LOT 1.

CORRECTED PLAT FINAL PLAT OF ROLLINS HILLS ESTATES PHASE 1 242.95 ACRES, SITUATED IN THE WILLIAM BRENT SURVEY, AB. NO. 114; MARTIN J. WELLS SURVEY, AB. NO. 1651; AND JACOB WILCOX SURVEY, AB. NO. 1662 PARKER COUNTY, TEXAS

STATE OF TEXAS COUNTY OF PARKER I hereby certify that this instrument was filed on the date and hour stamped hereon by me and was duly recorded in the volume and page of the named records of Parker County as stamped hereon by me. RECORDED FEB 23 2000

RECEIVED AND FILED FOR RECORD 4:35 O'Clock P.M. FEB 23 2000

Jeane Brunson, Co. Clerk PARKER COUNTY, TEXAS By B. Marci Deputy

ANY INFORMATION WHICH RESTRICTS THE EFFECT OF THIS INSTRUMENT SHALL BE VOID AND OF NO FORCE AND EFFECT UNLESS IT IS APPROVED BY THE CLERK OF THE COUNTY CLERK'S OFFICE.