

3000 MARKET STREET
ARLINGTON, TEXAS

DATE OF RECORD: QUANTITY OF RECORDS
 I hereby certify that this instrument was
 filed on the date set forth herein and that
 and was duly recorded in the public records
 of the county named in the margin and page
 as stated herein by me.
 Apr 08, 2004

By
 Leon Franklin

FILED FOR RECORDING
 OFFICE OF THE COUNTY CLERK
 COUNTY OF PARKER, TEXAS
 INSTRUMENT NO. 17460
 DATE: APR 08, 2004

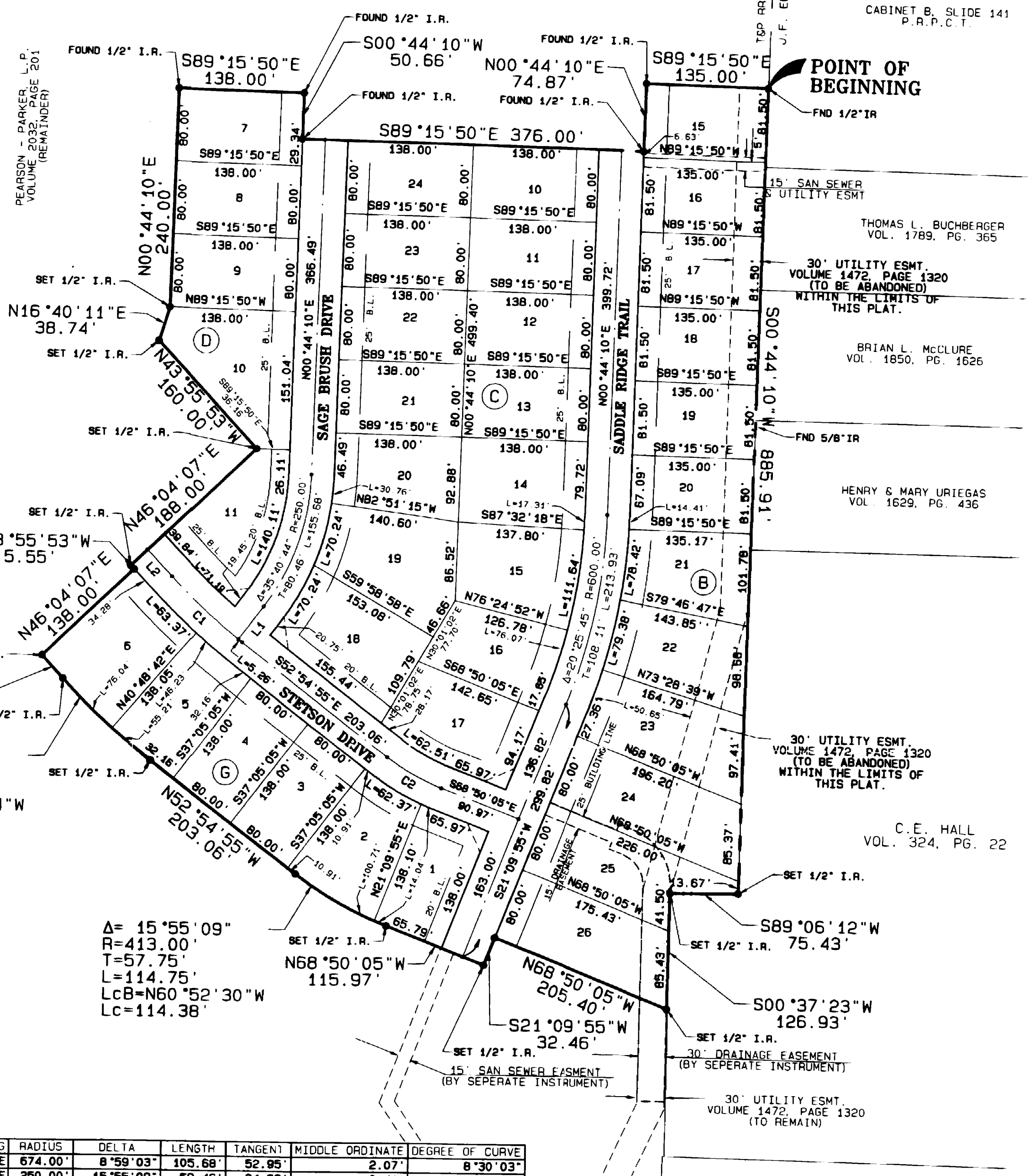
Doc 14319 BK 2208 UOI 286
 00514319 OR 2208 286

SILVERSTONE
 PHASE I
 CAB. SLIDE

LOT 1, BLOCK 1
 OAKRIDGE SCHOOL SUBDIVISION
 WEATHERFORD INDEPENDENT
 SCHOOL DISTRICT

CABINET B, SLIDE 141
 P.R.P.C.T.

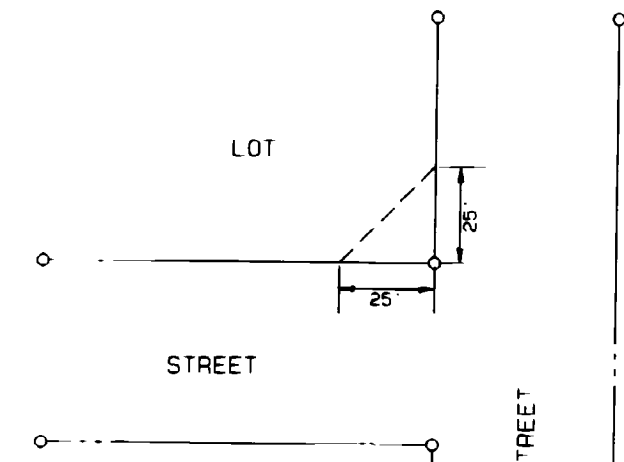
TSP RR CO. SURVEY ABSTRACT NO. 1489
 J.F. ERNEST SURVEY ABSTRACT NO. 433



$\Delta = 9^{\circ}09'48''$
 $R = 820.66'$
 $L = 131.25'$
 $LcB = N48^{\circ}25'24''W$
 $Lc = 131.11'$

$\Delta = 15^{\circ}55'09''$
 $R = 413.00'$
 $T = 57.75'$
 $L = 114.75'$
 $LcB = N60^{\circ}52'30''W$
 $Lc = 114.38'$

LINE	CHORD	CHORD BEARING	RADIUS	DELTA	LENGTH	TANGENT	MIDDLE ORDINATE	DEGREE OF CURVE
C1	105.58'	S48°25'24"E	674.00'	8°59'03"	105.68'	52.95'	2.07'	8°30'03"
C2	69.24'	S60°52'30"E	250.00'	15°55'09"	69.46'	34.96'	2.41'	22°55'06"
L1	45.44'	N36°24'54"E						
L2	39.84'	S43°55'53"E						



25' X 25' VISIBILITY TRIANGLE
 & SIDEWALK EASEMENT
 TYPICAL ALL STREET INTERSECTIONS

LOT TABULATION			LOT TABULATION		
LOT	SQUARE FOOTAGE	ACRES	LOT	SQUARE FOOTAGE	ACRES
BLOCK B			BLOCK D		
15	11003	0.25	7	11040	0.25
16	11003	0.25	8	11040	0.25
17	11003	0.25	9	11040	0.25
18	11003	0.25	10	15852	0.36
19	11003	0.25	11	13014	0.30
20	11003	0.25	BLOCK G		
21	12433	0.28	6	14353	0.33
22	13456	0.31	7	11439	0.26
23	15325	0.35	8	11040	0.25
24	16888	0.39	9	11040	0.25
25	15007	0.34	10	12758	0.29
26	15233	0.35	11	11041	0.25
BLOCK C					
10	11040	0.25			
11	11040	0.25			
12	11040	0.25			
13	11040	0.25			
14	13103	0.30			
15	13192	0.30			
16	11501	0.26			
17	13588	0.31			
18	15210	0.35			
19	15114	0.35			
20	11765	0.27			
21	11040	0.25			
22	11040	0.25			
23	11040	0.25			
24	11040	0.25			

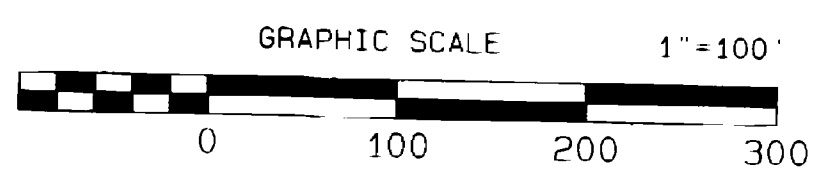
NOTE: BASIS OF BEARING FOR THIS
 PLAT IS THE CITY OF WEATHERFORD
 GIS COORDINATE SYSTEM

OWNER:
 PARKER-PEARSON, L.P.
 3220 W. SOUTHLAKE BOULEVARD
 SOUTHLAKE, TEXAS 76092
 (817) 379-6565

ACCT. NO.: 17460
 SCH. DIST.: WE
 CITY: WE
 MAP NO.: J-14

FINAL PLAT
 SILVERSTONE
 AT
 PEARSON RANCH
 PHASE 2

T. & P. R.R. CO. Survey
 Abstract No. 1499
 City of Weatherford
 Parker County, Texas



G Graham Associates, Inc.
 CONSULTING ENGINEERS & PLANNERS
 800 SIX FLAGS DRIVE, SUITE 500
 ARLINGTON, TEXAS 76011 (817) 640-8535