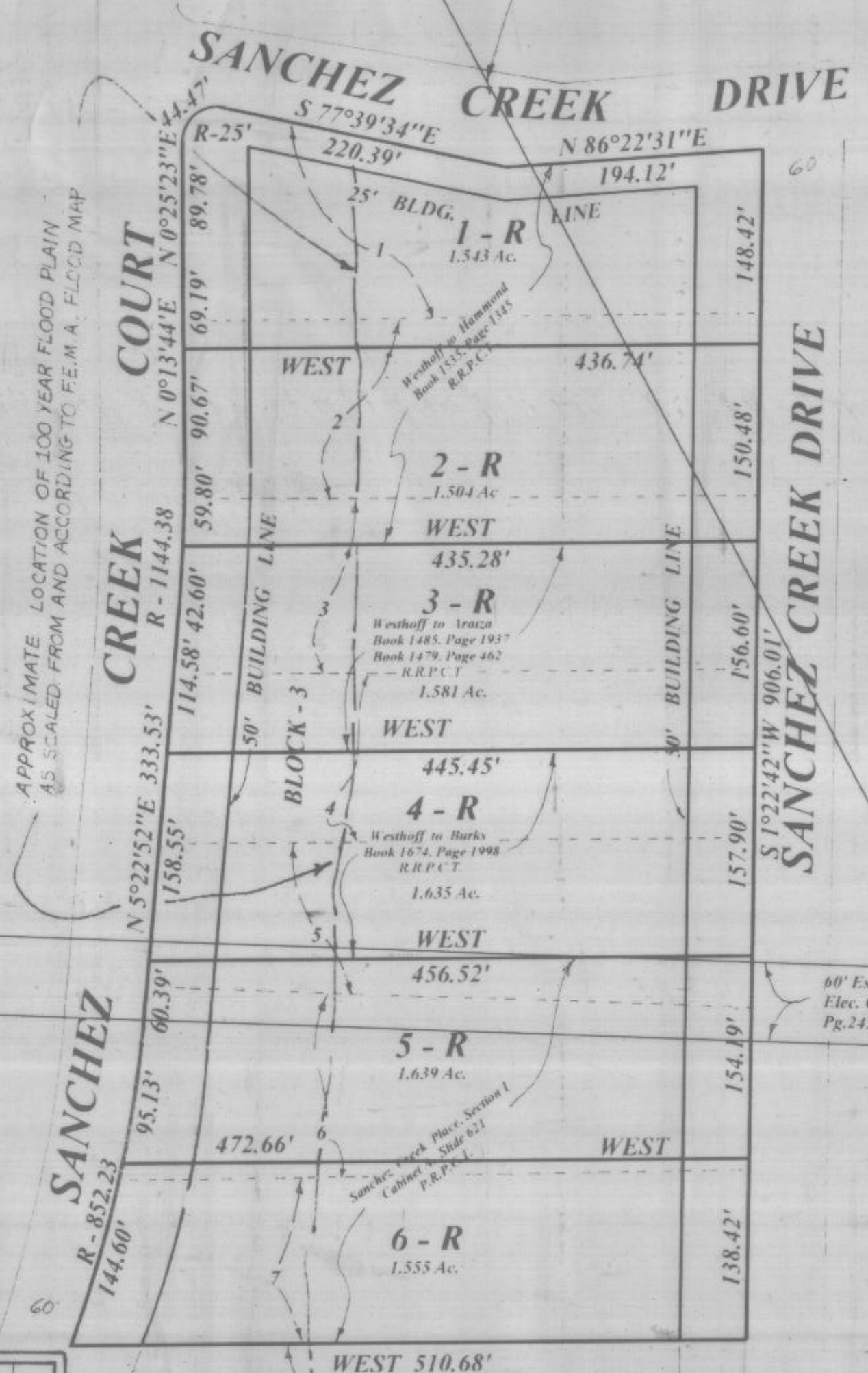


307136
PCB 191

RECEIVED AND FILED
FOR RECORD
10:15 O'clock *AM*
JAN 29 1997
Jeane Brunson, Co. Clerk
PARKER COUNTY, TEXAS
Jg

STATE OF TEXAS COUNTY OF PARKER
I hereby certify that this instrument was filed
on the date and time stamped herein by me and
was duly recorded in the volume and page of the
county records of Parker County as stamped here-
on by me.
RECORDED JAN 29 1997
Jeane Brunson
County Clerk, Parker County, Tex

C.L. of a 20' Empire pipeline
easement, Vol. 767, Pg. 406



N

SCALE
1" = 100'

APPROVED BY THE PARKER COUNTY COMMISSIONERS,
this the 27 day of ~~September~~ January 1997 B.L.

ACCEPTED BY:
Ben Long
County Judge
Al Hoak
Commissioners Precinct # 1
Wade Dabbs
Commissioners Precinct # 2
Charlie Dosta
Commissioners Precinct # 3
Rena Peden
Commissioners Precinct # 4

SANCHEZ CREEK PLACE
Section 1
LOTS 1-R - 6-R, BLOCK 3
PARKER COUNTY, TEXAS

Being a revision of Lots 1 through 7, Block 3, Sanchez
Creek Place, Section 1, Parker County, Texas, according
to plat recorded in Plat Cabinet A, Slide 621, Plat Records,
Parker County, Texas.

Note: Bearings are correlated with Block 3, Sanchez
Creek Place, Section 1, Plat Cabinet A, Slide 621, Plat
Records, Parker County, Texas.

A PART OF THIS TRACT DOES APPEAR TO
BE IN THE SPECIAL FLOOD HAZARD AREA ACCORDING
TO THE DEPT. OF HOUSING AND URBAN DEVELOPMENT
FIA FLOOD HAZARD BOUNDARY MAP.
NO. 480520 0200B
DATE 9/27/91

This plat or field note description is not intended to express
or imply a warranty or guarantee of ownership or that there
are no encumbrances on the tract described. The
certification hereon is only to the person who commissioned
the survey, and is not intended to imply that any adjoining
tracts referenced on this document have actually been surveyed
on the ground. The surveyor will only be responsible for errors
in an amount no greater than the fee he charged.

TOMMIE HUGHES AND ASSOCIATES
Registered Professional Land Surveyors
1414 S. MAIN STREET WEATHERFORD, TEXAS
Office 594 - 5374 or 596 - 0212 Home 613 - 1164

Tommie Hughes, Jr. certify that this map was prepared
from field notes of an actual ground survey made by me or under my supervision
and to the best of my knowledge and belief represents said survey, and that there
are no visible encroachments or prorsions other than those shown on the plat.

Date September 17, 1996 No. 17,041

NOTE: There are steel pins (set or found)
at the corners of each tract.

