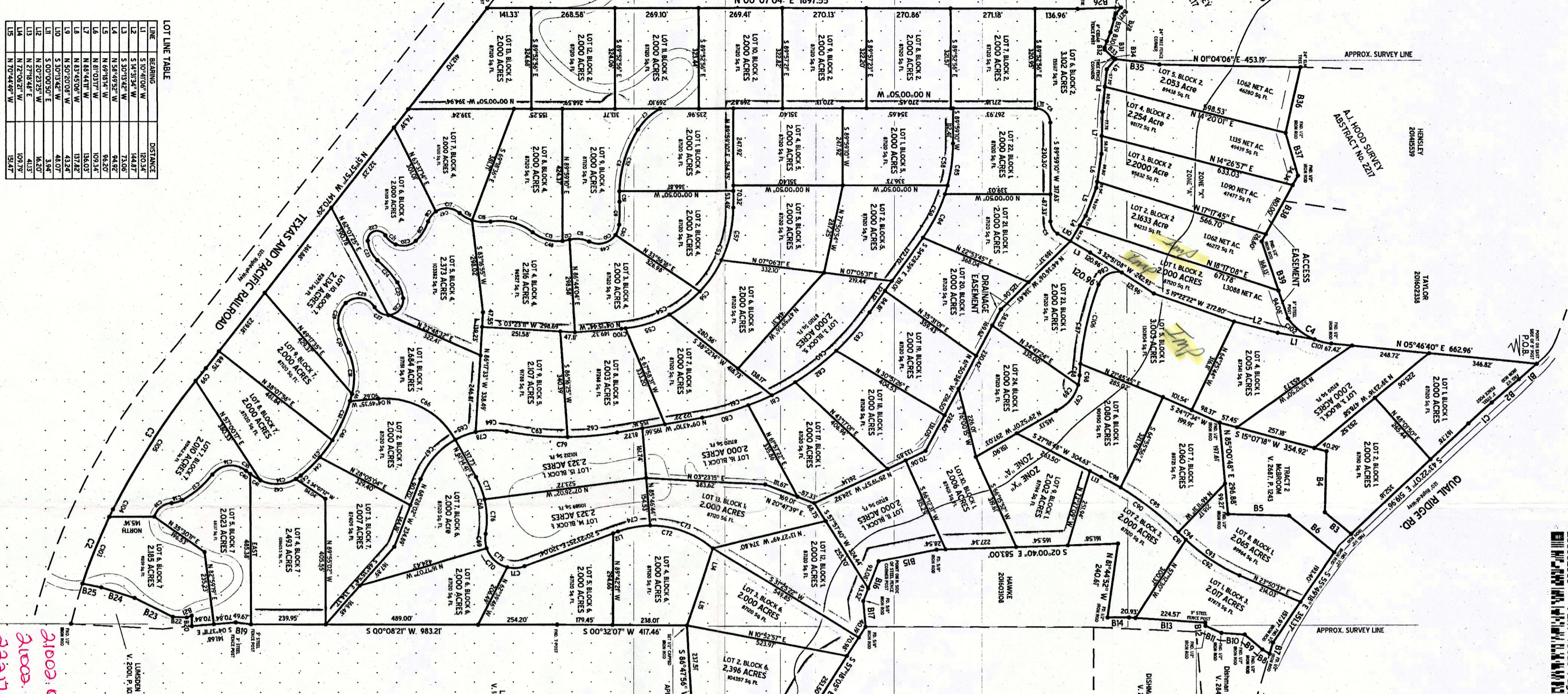
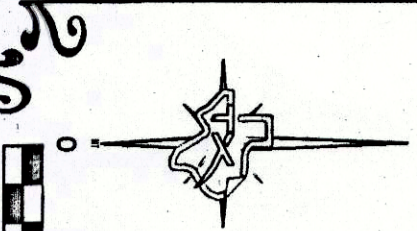


LOT LINE TABLE

LINE	BEARING	DISTANCE
L1	S 10°10'00" W	162.38
L2	S 10°10'00" W	175.06
L3	N 85°45'00" W	94.87
L4	N 85°45'00" W	94.87
L5	N 85°45'00" W	94.87
L6	N 85°45'00" W	109.34
L7	N 85°45'00" W	134.03
L8	N 85°45'00" W	177.82
L9	N 85°45'00" W	43.34
L10	S 00°00'00" E	48.07
L11	S 00°00'00" E	3.94
L12	N 20°23'57" W	164.20
L13	N 27°18'44" E	41.13
L14	N 72°04'57" W	109.79
L15	N 70°44'49" W	184.47



BOUNDARY LINE TABLE

LINE	BEARING	DISTANCE
B1	S 89°05'42" W	34.00
B2	S 89°32'02" E	74.09
B3	S 02°24'52" E	115.09
B4	S 39°35'38" W	109.43
B5	N 87°37'31" W	97.57
B6	N 07°32'49" E	98.29
B7	N 17°44'00" W	97.20
B8	S 37°52'42" E	37.02
B9	S 17°27'42" E	74.82
B10	S 04°00'45" W	74.07
B11	S 04°00'45" W	59.07
B12	S 04°00'45" W	59.07
B13	S 03°55'24" W	245.50
B14	S 03°55'24" W	49.00
B15	S 03°55'24" W	90.10
B16	S 03°55'24" W	134.60
B17	S 07°34'02" E	33.60
B18	N 85°24'20" E	184.03
B19	S 07°27'54" W	240.25
B20	S 07°27'54" W	49.87

FINAL PLAT OF
 LOTS 1-24, BLOCK 1; LOT 1-13, BLOCK 2;
 LOTS 1-2, BLOCK 3; LOTS 1-9, BLOCK 4;
 LOTS 1-9, BLOCK 5; LOTS 1-7, BLOCK 6;
 LOTS 1-10, BLOCK 7;
 "SEVENFOLD ADDITION"
 PARKER COUNTY, TEXAS
 DECEMBER 2018

ACCT. NO.: 17467
 SOH. DIST.: AL
 CITY: L-17
 MAP NO.: L-17

19% ESB
 8% DESEA

21002.009.000.00
 21002.012.000.00
 22217.004.000.50
 22217.016.001.00
 20832.005.000.00
 E 208

