

REVISED PLAT
OF
SOUTHLAND ADDITION
TO
WEATHERFORD TEXAS

DEDICATION

STATE OF TEXAS

COUNTY OF PARKER

That we the undersigned being the present owners of a tract of land containing approximately 13.24 acres, out of the L. McCarty Survey, Abstract #904, and P.S. Hall Survey, Abstract #659 in Parker County, Texas, do hereby adopt the foregoing plat for subdividing the same to be known as the Southland Addition to the City of Weatherford, Texas, and do hereby dedicate to the Public for Public use forever, all the streets, and easements shown on the foregoing plat and in addition, hereby dedicate all land not shown as numbered lots to the City of Weatherford as Park land.

In Testimony Whereof Witness our hands at Mineral Wells, Texas
This 11th day of March 1959

Attest: HOME MODERNIZATION CORP.

Anne Blackmon
Secretary

Larry Blackmon
Larry Blackmon, President

STATE OF TEXAS

COUNTY OF FALO PINO

BEFORE ME, THE UNDERSIGNED AUTHORITY

A Notary Public in and for the County of Falo Pinto and the State of Texas on this day personally appeared Larry Blackmon, President of the Home Modernization Corporation, known to me to be the person and officer whose name is subscribed to the foregoing instrument and acknowledged to me that the same was the act of the said Home Modernization Corporation a Texas Corporation and that he executed the same as the act of such Corporation for the purposes and considerations therein expressed and in the capacity therein stated.

GIVEN UNDER MY HAND & SEAL OF OFFICE
on this 11th day of March 1959

Marie Pembelt

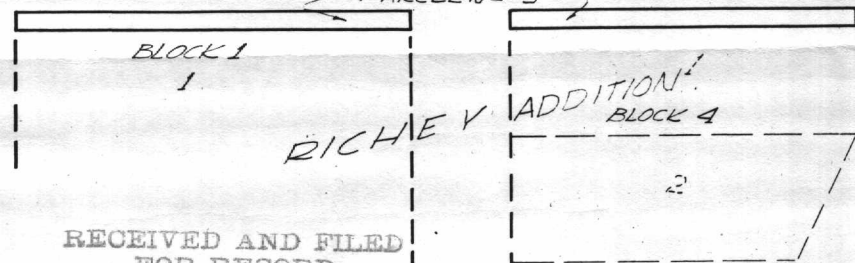
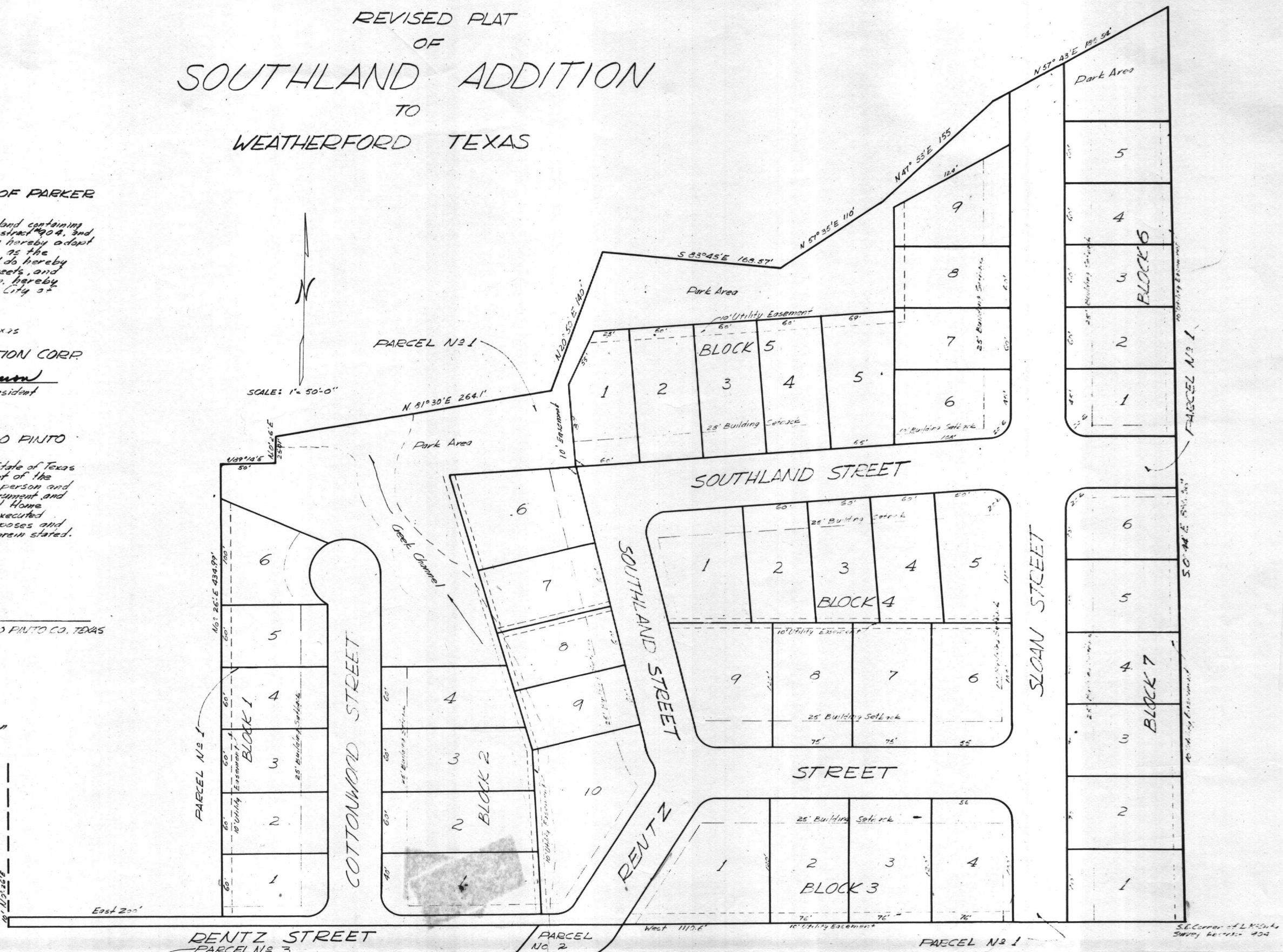
NOTARY PUBLIC, IN AND FOR FALO PINO CO., TEXAS

CITY COMMISSION
WEATHERFORD TEXAS

The foregoing plat of the Southland Addition to the City of Weatherford, Texas, is this day approved as the revised plat of said addition by the City Commission of the City of Weatherford, Texas.

IN TESTIMONY WHEREOF, witness our signatures
on this 19th day of March 1959

Mayor
City Commissioners
W.B. Hansen
City Commissioners



Field notes of 13.24 acres of land to be incorporated into the City of Weatherford, Parker County, Texas, to be known as Southland Addition, and being a part of the L. McCarty Survey, Abstract #904, P.S. Hall Survey, Abstract #659.

PARCEL #1 13.09 ACRES
Beginning at a point being the S.E. corner of the L. McCarty Survey, Abstract #904, THENCE West 1106.6 ft. to point being the S.W. corner of said tract; THENCE North 0 deg. 26' E. 10.0 ft. to point; THENCE East 200.0 ft. to point; THENCE North 1 deg. 26' E. 424.9 ft. to point being the N.W. corner of said tract; THENCE North 89 deg. 14 min. East 52.0 ft. to a point; THENCE N. 0 deg. 26' E. 25.0 ft. to a point; THENCE N. 81 deg. 30' E. 264.1 ft. to a point; THENCE N. 20 deg. 51' E. 14.0 ft. to a point; THENCE S. 32 deg. 25' E. 7.3 ft. to a point; THENCE N. 57 deg. 43' E. 183.54 ft. to a point, being the Northeast corner of said tract; THENCE S. 0 deg. 44' E. 885.56 ft. to point of beginning.

PARCEL #2 0.07 ACRES
Beginning at a point 50 ft. West and 30 ft. South of the N.E. corner of the P.S. Hall survey, said point being the N.E. corner of Lot 1, Block 4, Richey Addition; THENCE E. 50 ft. to a point; THENCE N. 51 deg. 0' E. 40 ft. to a point on the North boundary line of the P.S. Hall survey; THENCE E. 8 ft. along the North boundary line of the P.S. Hall survey; THENCE S. 32 deg. 25' E. 7.3 ft. to a point; THENCE in a S. Westerly direction 71 ft. on a 70 ft. radius to a point; THENCE W. 57 ft. to a point on the E. boundary line of Lot 1, Block 4, Richey Addition; THENCE N. 10 ft. to the point of beginning.

PARCEL #3 0.07 ACRES
The North 10 ft. of Lot 1, Block 4, and the North 10 ft. of Lot 1, Block 2, Richey Addition to the City of Weatherford, Parker County, Texas.

RECEIVED AND FILED
FOR RECORD
At 3:30 o'clock P.M.
MAR 19 1959
ORVILLE MILBURN, County Clerk
PARKER COUNTY, TEXAS
BY _____ DEPUTY

Filed for record 19 day of March 1959
In Volume 306 Page 601
Parker County Plat Records.
Orville Milburn
County Clerk