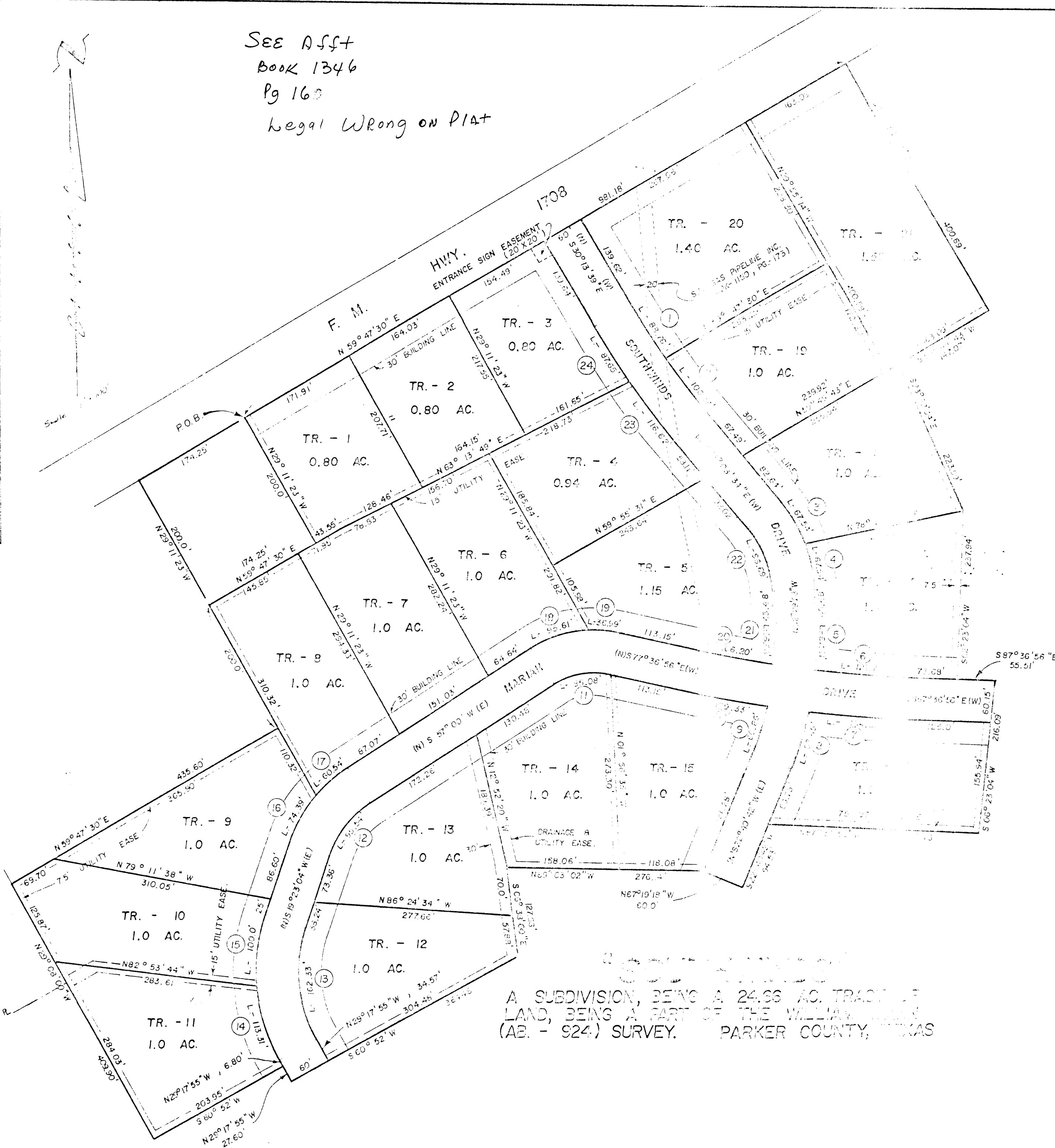


SEE ASST  
BOOK 1346  
Pg 160  
Legal Wrong on Plat

CURVE DATA		
NO.	RADIUS	CHORD - LENGTH
1	1252.67	N32°15'26"W, 88.74'
2	1252.67	N36°42'55"W, 106.14'
3	211.14	N29°58'47"W, 67.25'
4	211.14	N11°39'12"W, 67.25'
5	477.94	N01°33'02"E, 67.35'
6	1684.91	N85°26'35"W, 127.72'
7	1744.91	N85°24'03"W, 134.65'
8	477.94	N17°44'13"E, 82.35'
9	417.94	N15°05'45"E, 66.78'
10	1744.91	N79°24'33"W, 104.21'
11	107.40	N79°41'32"E, 82.87'
12	145.53	N38°11'32"E, 93.67'
13	191.05	N04°57'25"W, 157.59'
14	251.05	N16°22'06"W, 112.35'
15	251.05	N07°58'23"E, 99.34'
16	205.53	N29°45'13"E, 73.52'
17	205.53	N49°33'41"E, 60.32'
18	167.40	N73°21'44"E, 94.32'
19	167.40	N83°56'44"W, 36.91'
20	1684.91	N79°25'18"W, 106.14'
21	417.94	N01°23'44"E, 56.64'
22	131.14	N20°48'59"W, 97.75'
23	1312.67	N36°35'53"W, 106.14'
24	1312.67	N32°08'25"W, 87.64'



121759  
PCA 545

RECEIVED  
'86 APR -8 10:43  
CASH PAID  
BY *[Signature]*

STATE OF TEXAS COUNTY OF PARKER  
I hereby certify that this instrument was filed on the date and time stamped hereon by me and was duly recorded in the volume and page of the named records of Parker County as stamped hereon by me.

RECORDED APR 08 1986  
*[Seal]*  
Carrie Reed  
County Clerk, Parker County, Tex.

A SUBDIVISION, BEING A 24.66 AC. TRACT OF LAND, BEING A PART OF THE WILLIAM (A.E. - 924) SURVEY. PARKER COUNTY, TEXAS

HUGHES AND ASSOCIATES  
LAND SURVEYING  
CIVIL ENGINEERING  
LAND PLANNING  
111 L. COLUMBIA, SUITE E WEATHERFORD, TEXAS  
OFFICE 594-5374 OR 441-7619 HOME 594-2163

I certify that this map was prepared from field notes of an actual survey made by me or under my supervision and to the best of my knowledge and belief represents said survey.  
Date 3/26 No. 12,760  
SHEET 1 of 2