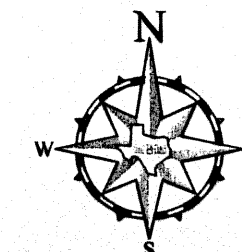
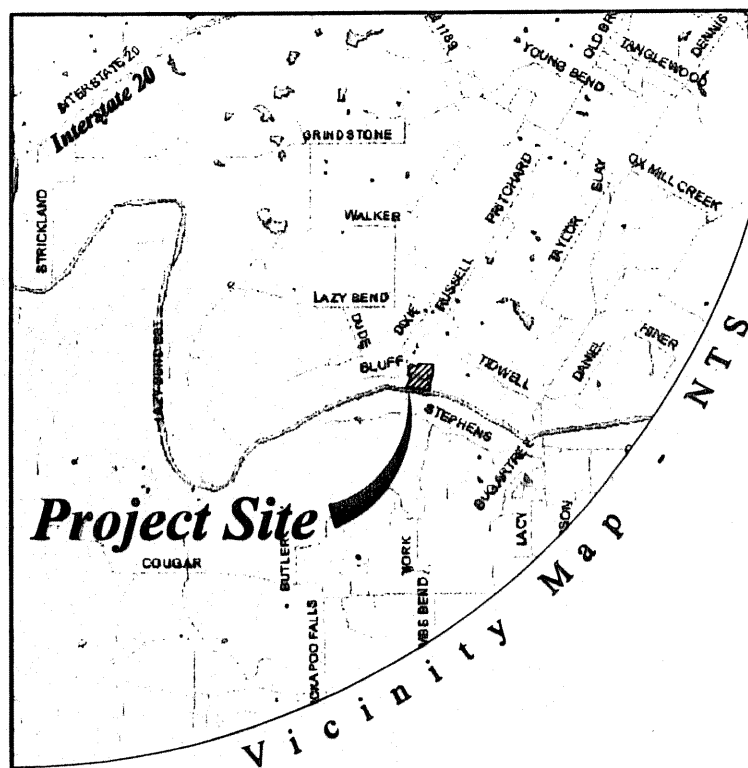


C548

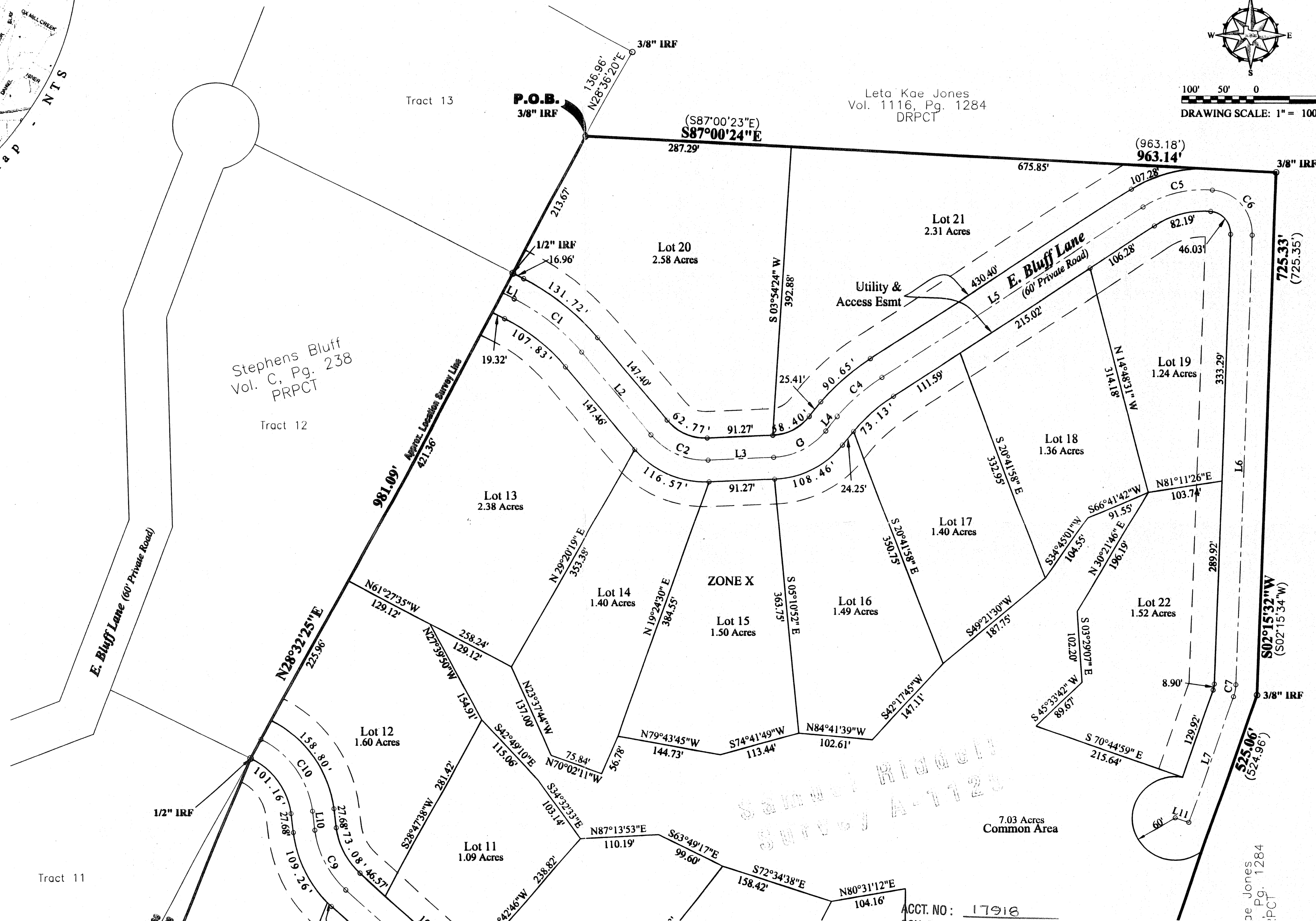


100' 50' 0 100'
 DRAWING SCALE: 1" = 100'



Project Site

Leta Kae Jones
 Vol. 1116, Pg. 1284
 DRPCT



LINE	LENGTH	BEARING
L1	18.14	S63°42'29"E
L2	147.43	S40°57'03"E
L3	91.27	N87°40'25"E
L4	24.85	N39°52'22"E
L5	430.76	N57°42'47"E
L6	623.03	S02°15'34"W
L7	189.08	S19°15'01"W
L8	138.62	N83°49'07"W
L9	337.89	N48°17'14"W
L10	27.68	N06°25'03"W
L11	20.00	N70°44'59"W

Number	Delta	Radius	Arc Length	Chord Bearing	Chord Length
C1	22°52'30"	300.00	119.77	N52°16'14"W	118.98
C2	51°22'33"	100.00	89.67	S66°38'19"E	86.69
C3	47°48'03"	100.00	83.43	N63°46'23"E	81.03
C4	15°38'14"	300.00	81.88	S49°53'39"W	81.62
C5	36°39'14"	158.54	101.43	S76°02'23"W	99.70
C6	87°51'46"	60.00	92.01	N41°40'19"W	83.26
C7	16°59'27"	60.00	17.79	N10°45'18"E	17.73
C8	35°31'52"	250.00	155.03	S66°03'11"E	152.56
C9	41°52'11"	130.00	95.00	S27°21'09"E	92.90
C10	57°17'15"	130.00	129.98	N35°03'41"W	124.63

ACCT. NO.: 17918
 SCH. DIST.: BR
 CITY: CO
 MAP NO.: D-21

Final Plat
 Lots 1-22

Stephens Bluff - Phase 2

Being 49.639 Acres in the
 Samuel Riddell Survey, Abstract No. 1129
 Parker County, Texas