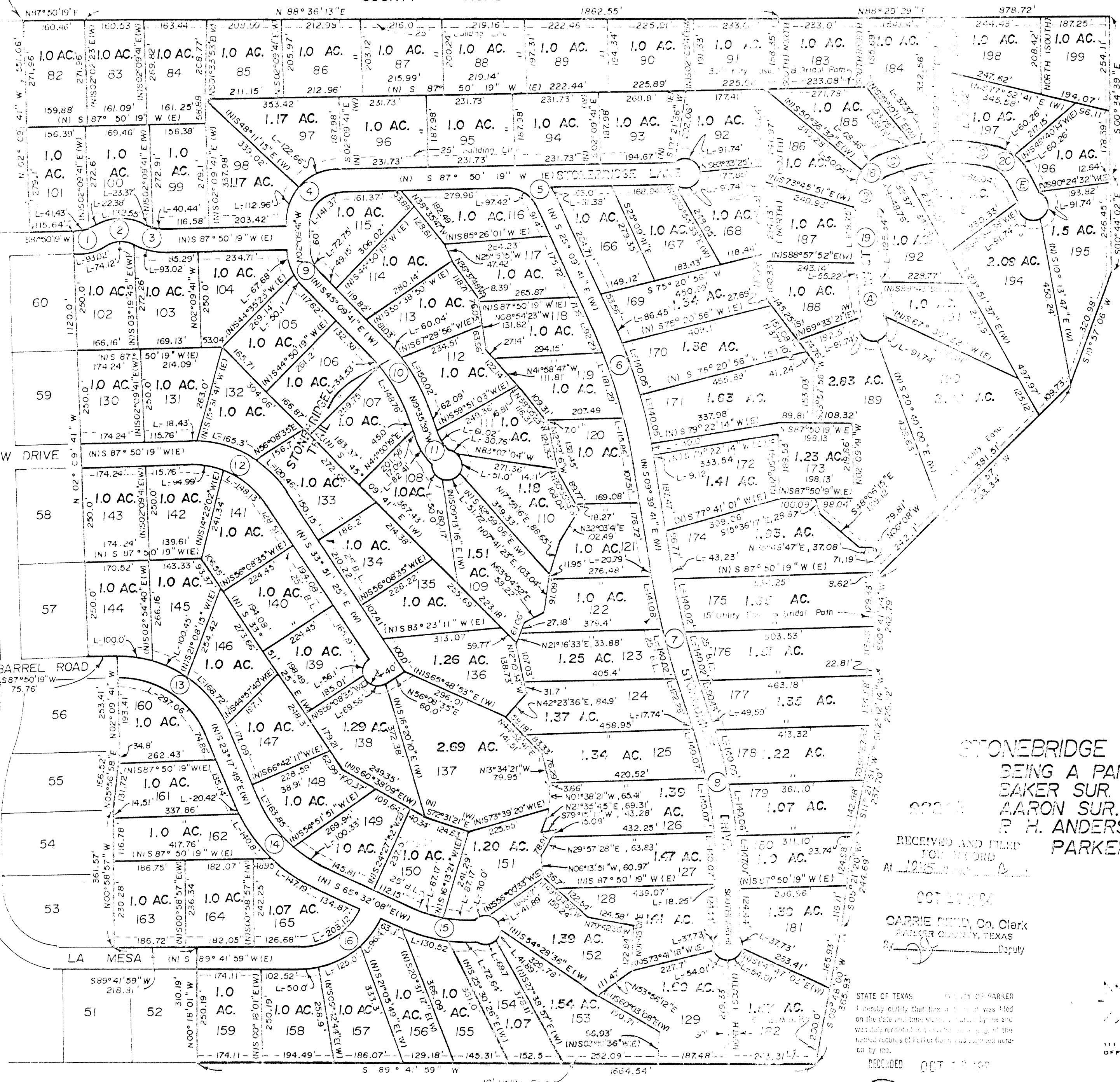


N 87° 50' 19" E, 1161.43' from the point of intersection of the S.B.L. of a Public Road with the E.B.L. of State Highway No. 51 said point also being S 31° 05' W, 25.77' & N 87° 50' 19" E, 1161.43' from the N.W. Cor. of the 254.661 Ac. tract of land, conveyed to STONEBRIDGE ESTATES, INC., by Brian S. Powers, in deed recorded in Vol. 1190, Page 342, D. R. P. C. T.

COUNTY ROAD

COACH TRAIL



	BEARING	DIST.
A	N06°27'10"W	93.54'
B	N01°47'50"E	50.86'
C	N70°46'42"E	48.75'
D	N81°01'24"W	41.12'
E	N28°03'04"W	65.82'

CENTERLINE CURVE DATA				
NO.	DELTA ANGLE	RADIUS	LENGTH	TANGENT
1	27°53'50"	161.05'	78.41'	40.0'
2	55°47'40"	106.11'	103.33'	56.18'
3	27°53'50"	161.05'	78.41'	40.0'
4	90°00'00"	120.0'	188.5'	120.0'
5	67°00'00"	113.31'	132.5'	75.0'
6	15°30'00"	1469.57'	397.56'	210.0'
7	10°00'00"	2400.31'	418.93'	210.0'
8	19°39'41"	1359.38'	466.48'	235.56'
9	43°00'00"	126.93'	95.26'	50.0'
10	25°33'42"	440.83'	196.67'	100.0'
11	21°29'59"	191.13'	71.72'	36.29'
12	58°18'16"	268.92'	273.65'	150.0'
13	68°51'52"	277.15'	333.11'	190.0'
14	42°14'19"	388.34'	286.29'	150.0'
15	27°31'18"	392.95'	188.75'	96.23'
16	65°14'07"	208.4'	237.28'	133.37'
17	28°11'54"	398.14'	195.95'	100.0'
18	31°30'37"	151.78'	83.47'	42.82'
19	08°15'00"	1386.59'	199.65'	100.0'
20	52°58'20"	100.35'	92.77'	50.0'
CUL - DE - SACS		40.0'	183.48'	

STONEBRIDGE ESTATES PHASE II
 BEING A PART OF THE HORACE
 BAKER SUR. AB. - 2191, JACOB
 LARON SUR. AB. - 15 AND THE
 P. H. ANDERSON SUR. AB. - 16.
 PARKER COUNTY, TEXAS

RECEIVED AND FILED
 FOR RECORD
 AT 12:50 P.M.

OCT 20 1984
 CARRIE DEED, Clerk
 PARKER COUNTY, TEXAS
 Deputy

SCALE 1" = 200'

LEGEND
 ○ IRON PIPE
 ⊙ STEEL ROD
 ⊗ FENCE CORNER
 * FENCE

STATE OF TEXAS
 COUNTY OF PARKER
 I hereby certify that this plat was filed
 on the date and time shown hereon and
 was duly recorded in the public records of
 Parker County, Texas, and is correct
 in accordance with the original records
 on file in the office of the County Clerk.

RECORDED OCT 18 1984
 [Seal] County Clerk, Parker County, Tex.

HUGHES AND ASSOCIATES
 LAND SURVEYING
 CIVIL ENGINEERING
 LAND PLANNING
 111 E. COLUMBIA, SUITE E WEATHERFORD, TEXAS
 OFFICE 594-5374 OR 441-7619 HOME 594-2165

I certify that this map
 was prepared from field notes of an actual survey made by me or
 under my supervision and to the best of my knowledge and belief
 represents said survey.

Date 8/84 No. 11,703

A-439