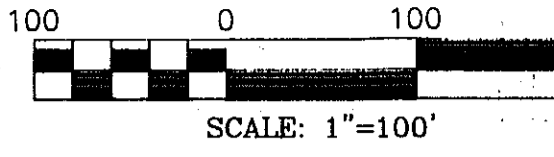
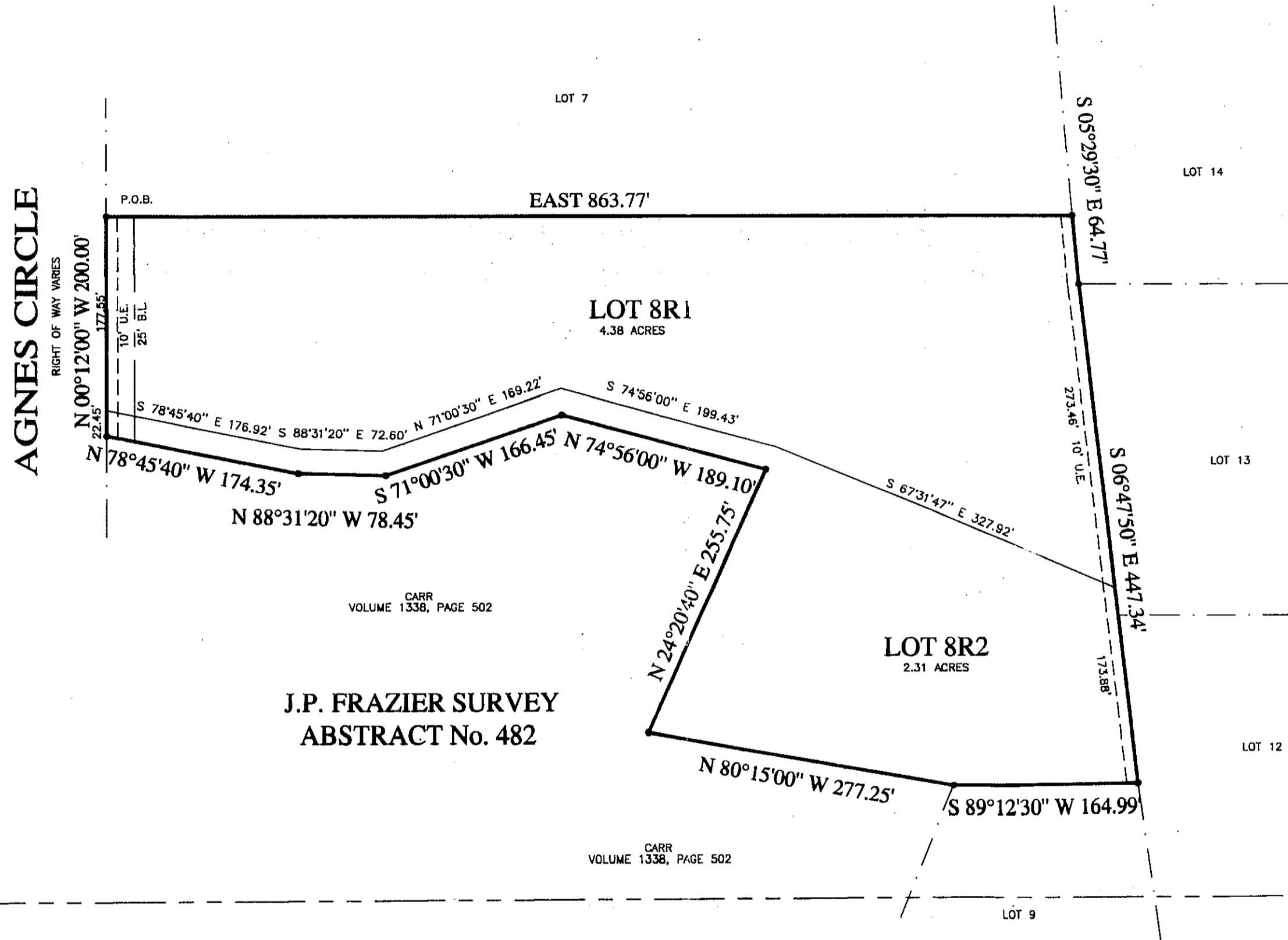


D-6



GENERAL NOTES

1/2" IRONS PHYSICALLY SET ON THE GROUND AT ALL LOT CORNERS, ANGLE POINTS AND POINTS OF CURVATURE UNLESS OTHERWISE NOTED  
6.69 ACRES TOTAL AREA  
THE MEADOW VIEW ORIGINALLY RECORDED IN VOLUME 363A, PAGE 6, P.R.P.C.T.  
THIS REPLAT DOES NOT ALTER OR REMOVE ANY RESTRICTIONS OR COVENANTS SET FORTH.



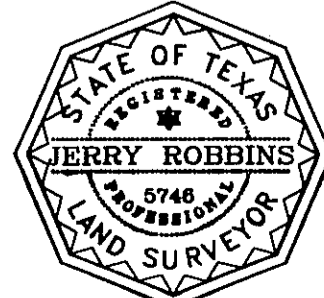
T. & P. RAILROAD CO. SURVEY  
ABSTRACT No. 1370



LONE STAR SURVEYING LLC  
512 HARBOR DRIVE S.  
AZLE, TEXAS 76020  
OFFICE 817-270-2323  
FAX 817-270-4181  
09115

This is to certify that I, JERRY ROBBINS, a Registered Professional Land Surveyor of the State of Texas, having plotted the above subdivision from an actual survey on the ground; and that all lot corners, and angle points, and points of curvature shall be properly marked on the ground, and that this plat correctly represents that survey made by me or under my direction and supervision.

JERRY ROBBINS  
REGISTERED PROFESSIONAL LAND SURVEYOR  
TEXAS REGISTRATION NO. 6746  
SURVEYED/JUNE/2009



ACCT. NO.: 14990  
SCH. DIST.: SP  
CITY: CO  
MAP NO.: H-5

**REPLAT  
SHOWING  
LOT 8R1 & 8R2  
THE MEADOW VIEW**  
A SUBDIVISION IN PARKER COUNTY, TEXAS  
BEING A REPLAT OF LOT 8  
THE MEADOW VIEW  
A SUBDIVISION IN PARKER COUNTY, TEXAS.