

Lot 1, Tract A
Eastern Parker County
Industrial Park
Cabinet B-649
P.R.P.C.T.

Lot 1-B, Tract A (remainder)
Eastern Parker County
Industrial Park
Cabinet A-156
P.R.P.C.T.

Lot 1, Block 2
Willow Park Crossing
Cabinet C-763
P.R.P.C.T.
Lhas, Incorporated
CCF# 201311725
D.R.P.C.T.

Lot 1, Block 1
Winn-Dixie Addition
Cabinet B-210
P.R.P.C.T.

Lot 2, Block 1
First National Bank Addition
Cabinet E-365
P.R.P.C.T.

Lot 3R, Block 1
The Village at
Willow Park
Cabinet D-389
P.R.P.C.T.

Lot 1, Block 2
0.593 Acres
25,814 Square Feet
Pyle
(Remainder)
Cabinet C-134
P.R.P.C.T.
The Morrison Group, Inc.
CCF# 201328039
D.R.P.C.T.

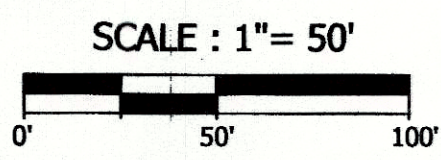
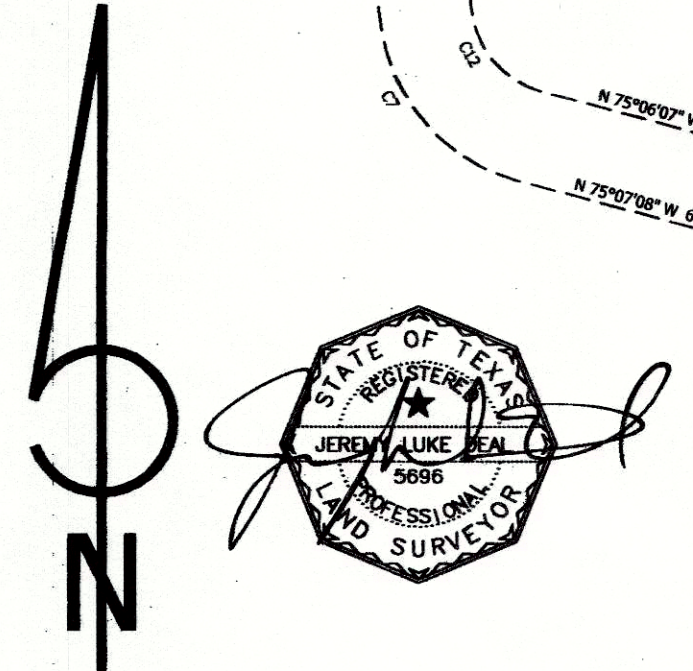
Lot 2, Block 2
0.721 Acres
31,395 Square Feet
POINT OF BEGINNING
Pyle
(Remainder)
Cabinet C-134
P.R.P.C.T.
The Morrison Group, Inc.
CCF# 201328039
D.R.P.C.T.

Lot 4, Block 3
The Village at Willow Park
Cabinet E-167
P.R.P.C.T.

Lot 3, Block 2
8.822 Acres
384,288 Square Feet
Pyle
(Remainder)
Cabinet C-134
P.R.P.C.T.
The Morrison Group, Inc.
CCF# 201328039
D.R.P.C.T.

Lot 3, Block 3
The Village at Willow Park
Cabinet E-167
P.R.P.C.T.

- Notes**
1. The Basis of Bearing is the Texas Coordinate System, North American Datum of 1983, North Central Zone, 4202.
 2. The purpose of this plat is to reconfigure lot lines and dedicate easements for development.



LEGEND
 D.R.P.C.T. = Deed Records, Parker County, Texas
 P.R.P.C.T. = Plat Records, Parker County, Texas
 CCF# = County Clerk's File Number
 IRF = Iron Road Found
 IRS = 5/8" Capped Iron Rod Set Stamped "Realsearch"

ACCT. NO.: 18354
 SCH. DIST.: AL
 CITY: CWK
 MAP NO.: L-14
 Search

Owner
 The Morrison Group, Inc.
 1620 Wabash
 Fort Worth, Tx 76107
 817-709-8671

Project Number: 190384 Date: June 18, 2020
 Revised Date:
 Revision Notes:
 Sheet 1 of 3

**FINAL PLAT OF
 LOTS 1, 2 AND 3, BLOCK 2
 THE VILLAGE AT WILLOW PARK**
 Being a replat of a portion of Pyle, an
 addition to the City of Willow Park, Parker
 County, Texas, according to the plat recorded
 in Cabinet C-134, Plat Records, Parker
 County Texas, situated in the J. Cole Survey,
 Abstract Number 218, City of Willow Park,
 Parker County, Texas.

116390.001.001.10

REALSEARCH OF TEXAS, LLC
 P.O. Box 1006, Godley, Texas 76044
 Ph. 682-200-6050, jdeal@realsearch.org, www.realsearch.org
 "Thou shalt not remove thy neighbor's landmark" Deut. 19:14
 TBPLS Firm Registration # 10158200 TBPE Firm Registration # 17968