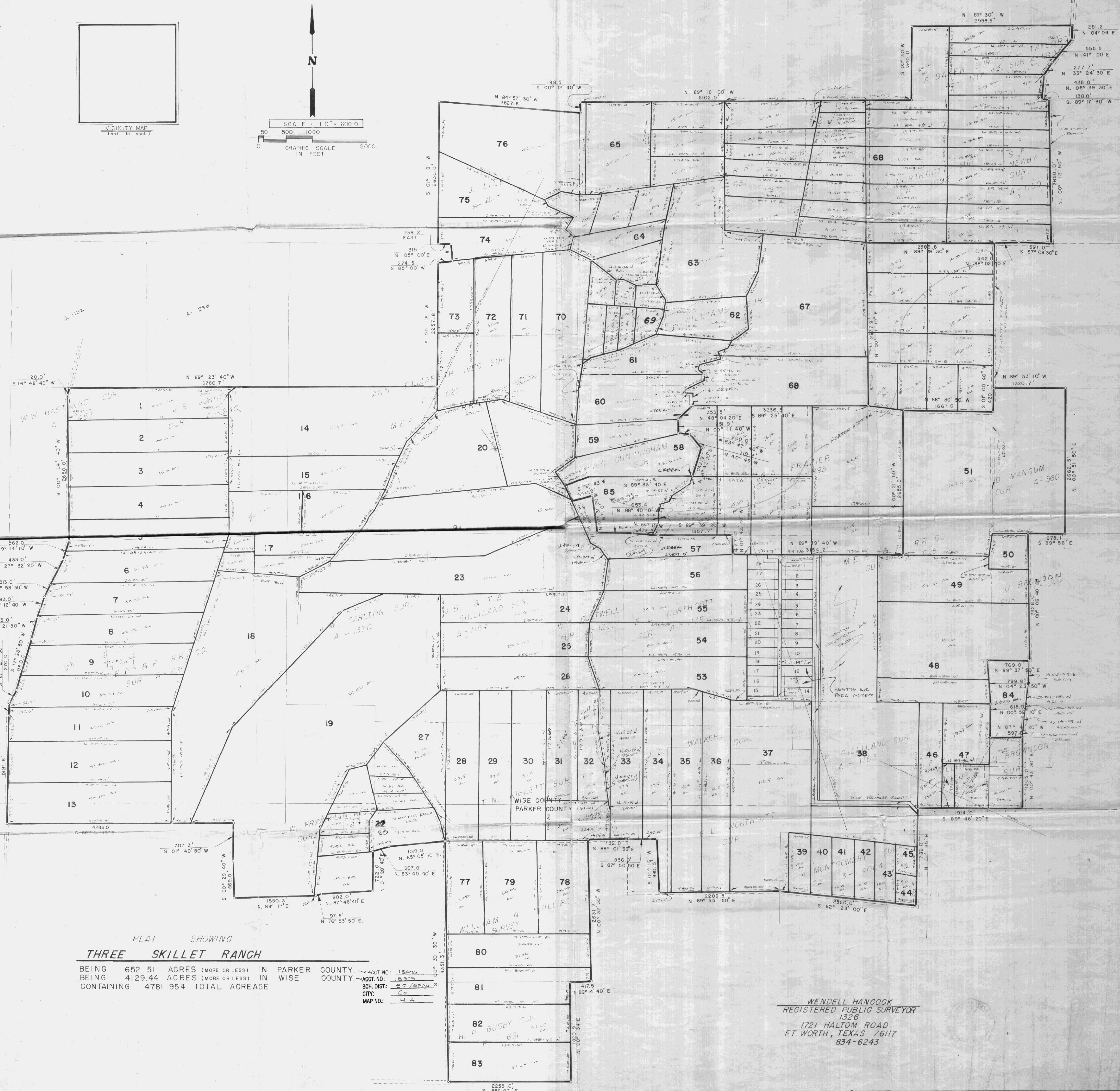


VICINITY MAP  
(Not to scale)



SCALE: 1.0" = 600.0'  
0 500 1000  
GRAPHIC SCALE  
IN FEET



PLAT SHOWING  
**THREE SKILLET RANCH**

BEING 652.51 ACRES (MORE OR LESS) IN PARKER COUNTY  
BEING 4129.44 ACRES (MORE OR LESS) IN WISE COUNTY  
CONTAINING 4781.954 TOTAL ACREAGE

ACCT. NO.: 18576  
ACCT. NO.: 18375  
SCH. DIST.: 30/32A  
CITY: Co.  
MAP NO.: H-4

WENDELL HANCOCK  
REGISTERED PUBLIC SURVEYOR  
1326  
1721 HALTOM ROAD  
FT WORTH, TEXAS 76117  
834-6243