

364 07/1997

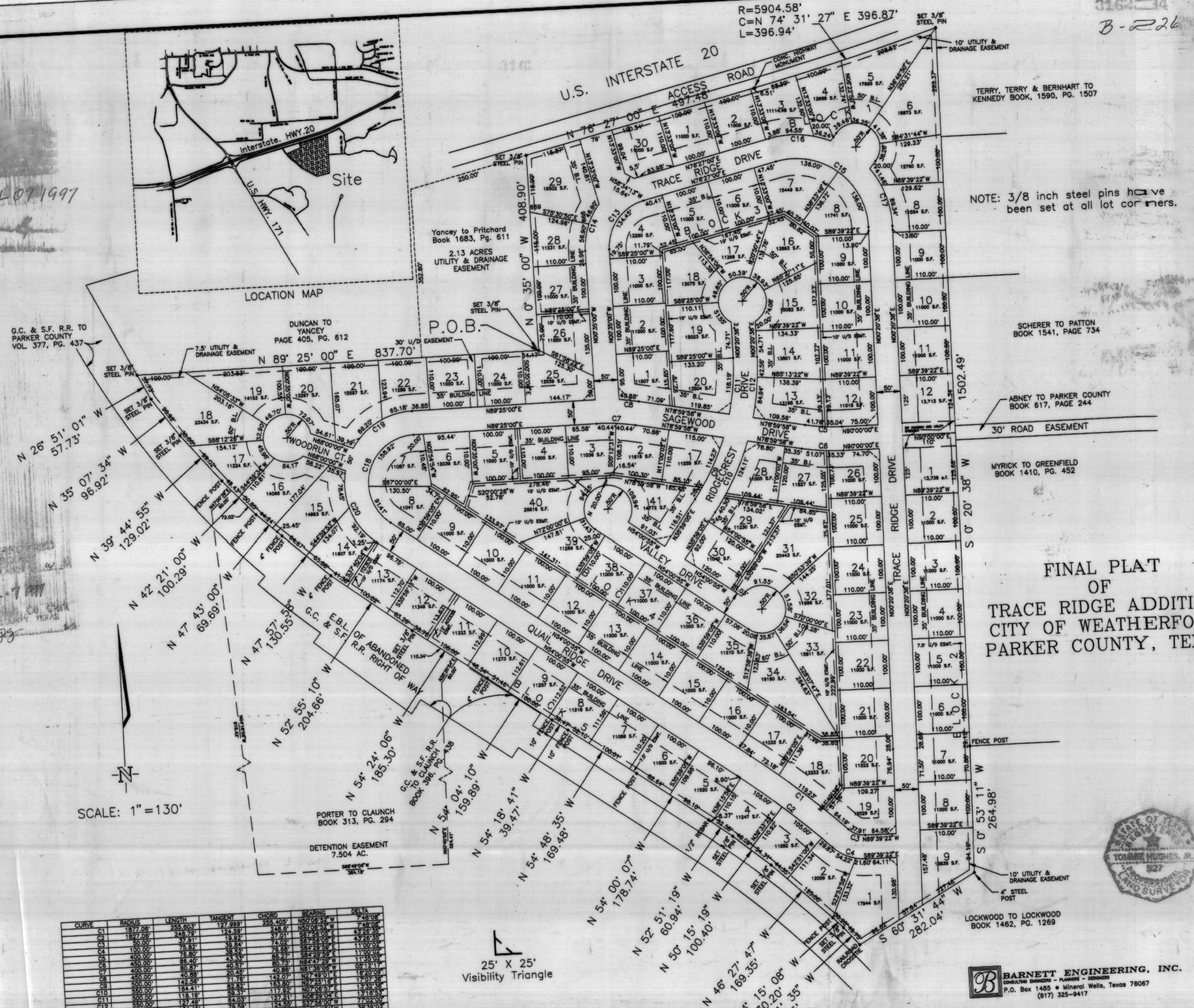
[Handwritten signature]

10:30

JUL 7 1997

[Handwritten notes]

SCALE: 1" = 130'



NOTE: 3/8 inch steel pins have been set at all lot corners.

TERRY, TERRY & BERNHART TO KENNEDY BOOK, 1590, PG. 1507

SCHERER TO PATTON BOOK 1541, PAGE 734

ABNEY TO PARKER COUNTY BOOK 617, PAGE 244

MYRICK TO GREENFIELD BOOK 1410, PG. 452

FINAL PLAT OF TRACE RIDGE ADDITION CITY OF WEATHERFORD PARKER COUNTY, TEXAS



BARNETT ENGINEERING, INC.
CONSULTING ENGINEERS - PLANNERS - DESIGNERS
P.O. Box 1485 • Mineral Wells, Texas 76067
(817) 325-9417

Project No. 17016

TOMMIE HUGHES AND ASSOCIATES
Registered Professional Land Surveyors
1414 S. MAIN STREET WEATHERFORD, TEXAS
Office 594-5374 or 596-0212 Home 613-1164

CURVE	RADIUS	LENGTH	TANGENT	CHORD	BEARING	DELTA
C1	1877.06'	255.603'	127.999'	255.405'	N50°08'52" W	7°48'08"
C2	1827.06'	248.791'	124.592'	248.6'	N50°08'52" W	7°48'08"
C3	80.00'	37.911'	19.824'	37.011'	S67°56'05" E	43°28'36"
C4	100.00'	75.821'	38.840'	74.021'	S67°56'05" E	43°28'36"
C5	400.00'	78.800'	38.522'	76.688'	S84°29'59" E	11°00'02"
C6	450.00'	86.400'	43.339'	85.571'	S84°29'59" E	11°35'02"
C7	400.00'	80.870'	40.571'	80.861'	N81°38'06" W	09°12'17"
C8	450.00'	40.888'	20.448'	40.888'	N27°49'01" E	18°20'09"
C9	500.00'	142.561'	71.781'	142.071'	N27°25'16" E	17°37'36"
C10	550.00'	184.611'	92.306'	183.807'	N27°25'16" E	17°37'36"
C11	500.00'	127.481'	64.033'	127.211'	N27°25'16" E	17°37'36"
C12	550.00'	134.451'	67.853'	134.451'	N27°25'16" E	17°37'36"
C13	100.00'	45.000'	22.500'	45.000'	S37°56'00" W	72°02'00"
C14	150.00'	103.811'	51.906'	103.811'	S37°56'00" W	72°02'00"
C15	150.00'	271.981'	135.991'	271.981'	N84°48'59" W	37°28'10"
C16	200.00'	130.791'	65.396'	130.791'	N19°23'22" W	143°25'55"
C17	200.00'	250.341'	125.171'	250.341'	S17°42'03" W	57°49'21"
C18	150.00'	151.381'	75.691'	151.381'	S60°30'19" W	57°49'21"
C19	150.00'	173.891'	86.946'	173.891'	S20°48'17" E	86°29'18"
C20	150.00'	173.891'	86.946'	173.891'	S20°48'17" E	86°29'18"

25' X 25' Visibility Triangle