

25-A-47

to J. DON WILLIAMSON Rem. of 1522-1172

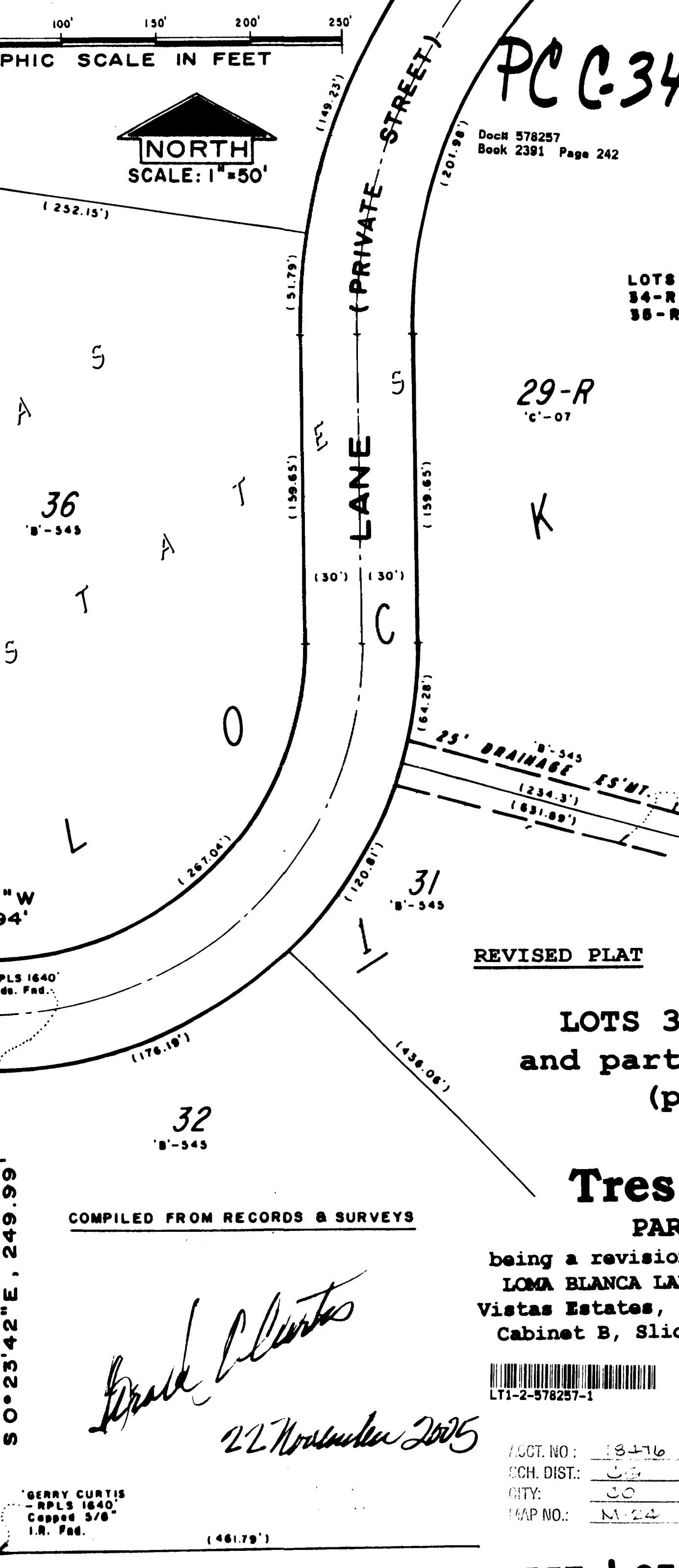
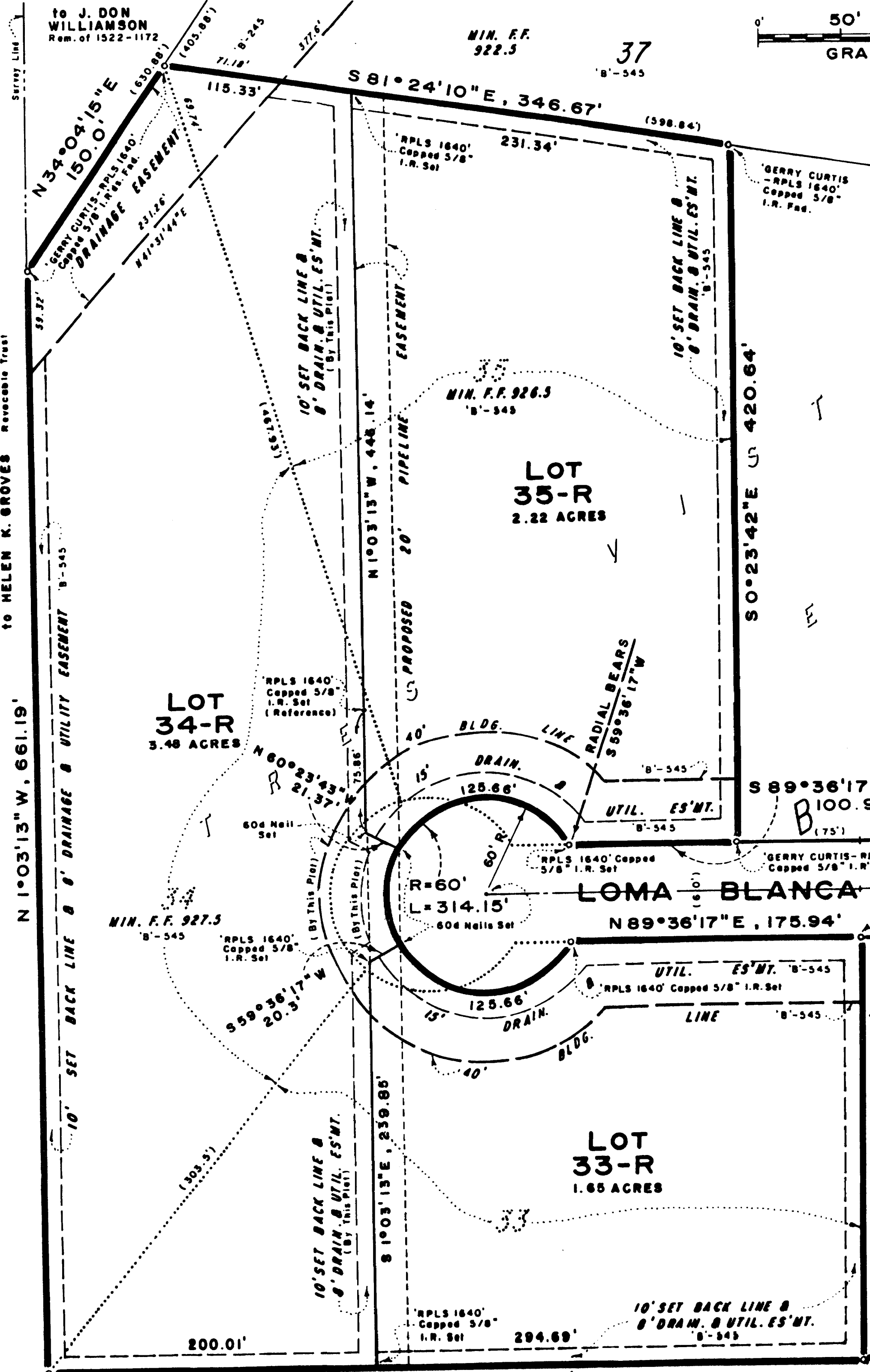
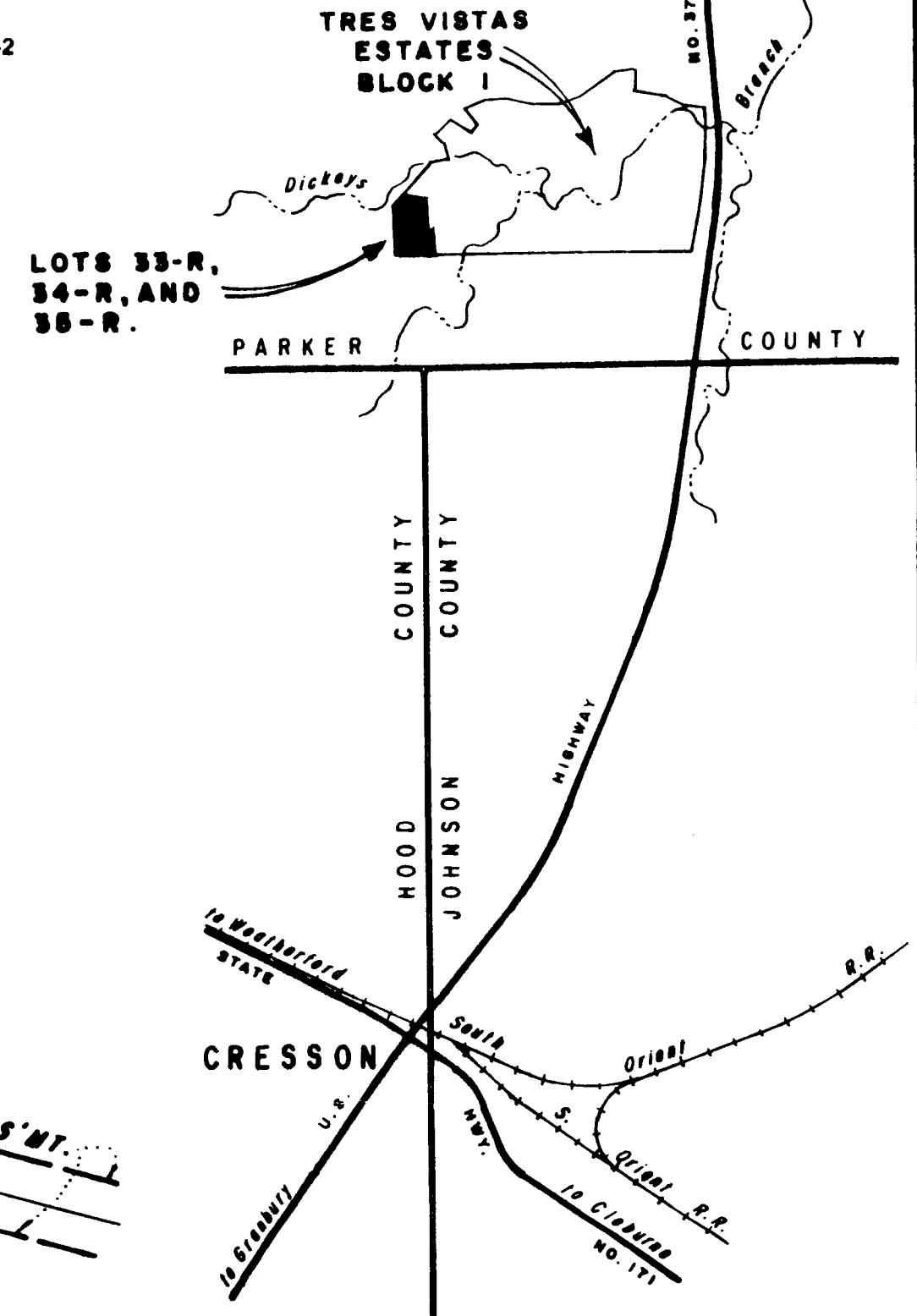
MIN. F.F. 922.5 37 B-545



PC C-343

LOCATION MAP SCALE: 1"=2000'

Doc# 578257 Book 2391 Page 242



REVISED PLAT

LOTS 33-R, 34-R, & 35-R, and part of LOMA BLANCA LANE (private street) BLOCK 1,

Tres Vistas Estates

PARKER COUNTY, TEXAS

being a revision of LOTS 33, 34, & 35, and part of LOMA BLANCA LANE (private street), BLOCK 1, Tres Vistas Estates, as shown on plat thereof recorded in Cabinet B, Slide 545, Parker County Plat Records.

COMPILED FROM RECORDS & SURVEYS

Gerry Curtis
22 November 2005



ACCT. NO.: 18476
SCH. DIST.: 30
CITY: CO
MAP NO.: M-24

THIS PLAT FILED IN CABINET _____
SLIDE _____, 2005

GCA GERRY CURTIS ASSOCIATES, INC. Surveyors
P.O. Box 9668 817/334-0381
Fort Worth, Texas 76147-2668

SHEET 1 OF 2...